



## DREHSTROM-HOCHSPANNUNGS-MOTOREN

Kühlart: IC611, Luft-Luft-Kühlung

### THREE - PHASE HIGH VOLTAGE MOTORS

Cooling Method: IC611, Air-Air

### MOTEURS DE HAUTE TENSION DE TROIS PHASE

Méthode de refroidissement IC611, air-air de refroidissement

### 13.8 kV - 60 Hz - CL F - IP55



Typ	Nennleistung	Nenn-drehzahl	N-strom 13.8 kV	Leistungs- faktor	Wirkungs- grad	Anzugs- moment	Anzugs- strom	Kipp- moment	Gewicht
Type	Rated output	Rated speed	Current 13.8 kV	Power factor	Efficiency %	Relative torque	Relative current	B-down Torque	Weight
Type	Puissance nominale	Vitesse nominale	Intensité 13.8 kV	Facteur de puissance	Rendement %	Couple démarrage	Courant démarrage	Couple maximal	Masse
	KW	1 / min	A	cos $\varphi$	%	MA / MN	Ia / In	MK / MN	kg

### 2 Polig / 2 Poles / 2 Pôles

HJS355A-2	220	3568	14.7	0.85	92.5	0.6	7.0	1.8	2250
HJS355B-2	250	3566	16.7	0.85	92.6	0.6	7.0	1.8	2300
HJS355C-2	280	3568	18.7	0.85	92.8	0.6	7.0	1.8	2350
HJS355D-2	315	3570	20.9	0.85	93.1	0.6	7.0	1.8	2400
HJS400B-2	355	3572	23.2	0.86	93.4	0.6	7.0	1.8	2700
HJS400C-2	400	3571	26.1	0.86	93.7	0.6	7.0	1.8	2780
HJS400D-2	450	3570	29.3	0.86	94.0	0.6	7.0	1.8	2900
HJS400E-2	500	3571	32.4	0.86	94.2	0.6	7.0	1.8	2950
HJS450B-2	560	3576	36.2	0.86	94.4	0.6	7.0	1.8	4000
HJS450C-2	630	3576	40.2	0.87	94.6	0.6	7.0	1.8	4300
HJS450D-2	710	3577	45.3	0.87	94.7	0.6	7.0	1.8	4600
HJS450E-2	800	3580	51.0	0.87	94.8	0.6	7.0	1.8	4900
HJS500A-2	900	3577	57.2	0.87	95.0	0.6	7.0	1.8	5200
HJS500B-2	1000	3580	63.5	0.87	95.1	0.6	7.0	1.8	5440
HJS500C-2	1120	3578	71.1	0.87	95.2	0.6	7.0	1.8	5650
HJS500D-2	1250	3576	79.2	0.87	95.3	0.6	7.0	1.8	5880
HJS560A-2	1400	3576	87.6	0.88	95.4	0.6	7.0	1.8	6800
HJS560B-2	1600	3575	100.0	0.88	95.5	0.6	7.0	1.8	6900
HJS560C-2	1800	3578	112.4	0.88	95.6	0.6	7.0	1.8	7160
HJS630A-2	2000	3578	124.8	0.88	95.7	0.6	7.0	1.8	9450
HJS630B-2	2240	3578	139.6	0.88	95.8	0.6	7.0	1.8	9850
HJS630C-2	2500	3578	155.7	0.88	95.9	0.6	7.0	1.8	10250
HJS710A-2	2800	3579	172.2	0.89	96.0	0.6	7.0	1.8	15250
HJS710B-2	3150	3589	193.5	0.89	96.1	0.6	7.0	1.8	15800
HJS710C-2	3550	3591	217.9	0.89	96.2	0.6	7.0	1.8	16200
HJS710D-2	4000	3593	245.2	0.89	96.3	0.6	7.0	1.8	16850
HJS800A-2	4500	3595	275.6	0.89	96.4	0.6	7.0	1.8	22300
HJS800B-2	5000	3595	305.9	0.89	96.5	0.6	7.0	1.8	23500
HJS800C-2	5600	3595	342.3	0.89	96.6	0.6	7.0	1.8	25100





**DREHSTROM-HOCHSPANNUNGS-MOTOREN**

Kühlart: IC611, Luft-Luft-Kühlung

**THREE - PHASE HIGH VOLTAGE MOTORS**

Cooling Method: IC611, Air-Air

**MOTEURS DE HAUTE TENSION DE TROIS PHASE**

Méthode de refroidissement IC611, air-air de refroidissement



**13.8kV - 60 Hz - CL F - IP55**

Typ	Nennleistung	Nenn-drehzahl	N-strom 13.8kV	Leistungs-faktor	Wirkungs-grad	Anzugs-moment	Anzugs-strom	Kipp-moment	Trägheits-moment kg m2	Gewicht
Type	Rated output	Rated speed	Current 13.8kV	Power factor	Efficiency %	Relative torque	Relative current	B-down Torque	Moment of inertia kg m2	Weight
Type	Puissance nominale	Vitesse nominale	Intensité 13.8kV	Facteur de puissance	Rendement %	Couple démarrage	Courant démarrage	Couple maximal	Moment d'inertie kg m2	Masse
	KW	1 / min	A	cos φ	%	MA / MN	Ia / In	MK / MN	Motor J Load	kg

**4 Polig / 4 Poles / 4 Pôles**

HJS400A-4	200	1786	15	0.85	91.4	0.9	6.6	2.9	13	130	3370
HJS400B-4	220	1786	17	0.86	91.6	0.9	6.5	2.6	13	140	3380
HJS400C-4	250	1786	19	0.85	91.8	0.9	6.4	2.7	14	150	3390
HJS400D-4	280	1784	21	0.85	92.1	0.8	6.3	2.4	15	160	3400
HJS400E-4	315	1784	23	0.84	92.2	0.8	6.2	2.4	15	170	3500
HJS400F-4	355	1782	26	0.86	92.2	0.9	6.3	2.5	16	180	3510
HJS400G-4	400	1782	29	0.86	92.8	0.9	6.3	2.6	16	190	3640
HJS400H-4	450	1782	32	0.86	93.2	0.9	6.4	2.5	17	200	3770
HJS450A-4	500	1783	35	0.88	93.1	0.8	6.3	2.4	17	240	4780
HJS450B-4	560	1783	39	0.88	93.4	0.8	6.2	2.5	21	260	4900
HJS450C-4	630	1784	44	0.88	93.7	0.9	6.4	2.5	24	270	5020
HJS450D-4	710	1784	49	0.89	94.1	0.9	6.4	2.5	29	280	5150
HJS500A-4	800	1786	56	0.88	94.2	0.7	5.7	2.4	34	340	5700
HJS500B-4	900	1786	62	0.90	94.3	0.7	5.8	2.4	40	350	5900
HJS500C-4	1000	1786	68	0.90	94.5	0.7	5.6	2.3	44	360	6100
HJS500D-4	1120	1786	76	0.90	94.6	0.7	5.5	2.3	47	370	6400
HJS560A-4	1250	1789	85	0.90	94.9	0.7	6.0	2.4	55	390	7750
HJS560B-4	1400	1789	96	0.89	95.2	0.7	6.1	2.5	60	405	8000
HJS560C-4	1600	1789	110	0.88	95.4	0.7	6.2	2.5	65	430	8250
HJS560D-4	1800	1789	124	0.88	95.7	0.7	6.2	2.6	75	450	8750
HJS630A-4	2000	1790	136	0.89	95.4	0.7	6.5	2.5	135	500	9700
HJS630B-4	2240	1792	150	0.90	95.5	0.8	6.4	2.5	145	600	10100
HJS630C-4	2500	1790	168	0.90	95.6	0.8	6.5	2.4	156	900	10800
HJS630D-4	2800	1793	188	0.90	95.7	0.8	6.3	2.5	166	1200	11600
HJS710A-4	3150	1794	207	0.91	96.5	0.7	6.2	2.6	180	1460	14780
HJS710B-4	3550	1794	236	0.90	96.6	0.7	6.5	2.8	210	1890	15460
HJS710C-4	4000	1794	262	0.91	96.6	0.7	6.5	2.8	230	2160	15970
HJS800A-4	4500	1793	296	0.91	96.6	0.7	6.0	2.6	280	2350	18860
HJS800B-4	5000	1794	328	0.91	96.6	0.7	6.4	2.7	300	2460	19430
HJS800C-4	5600	1794	367	0.91	96.7	0.7	6.5	2.8	320	2640	20260
HJS900A-4	6300	1794	418	0.90	96.8	0.7	6.5	2.6	410	2780	24470
HJS900B-4	7100	1794	471	0.90	96.8	0.8	6.3	2.5	450	2850	25380
HJS900C-4	8000	1794	529	0.90	96.9	0.8	6.3	2.4	490	2990	26790
HJS1000A-4	9000	1794	602	0.89	96.9	0.5	6.4	2.6	910	2670	32960
HJS1000B-4	10000	1795	669	0.89	97.0	0.5	6.5	2.7	980	2910	33980
HJS1000C-4	11200	1795	748	0.89	97.1	0.5	6.5	2.6	1120	3160	34730
HJS1000D-4	12500	1795	834	0.89	97.2	0.5	6.5	2.6	1240	3450	36010





## DREHSTROM-HOCHSPANNUNGS-MOTOREN

Kühlart: IC611, Luft-Luft-Kühlung

## THREE - PHASE HIGH VOLTAGE MOTORS

Cooling Method: IC611, Air-Air

## MOTEURS DE HAUTE TENSION DE TROIS PHASE

Méthode de refroidissement IC611, air-air de refroidissement



### 13.8kV - 60 Hz - CL F - IP55

Typ	Nennleistung	Nenn-drehzahl	N-strom 13.8kV	Leistungs-faktor	Wirkungs-grad	Anzugs-moment	Anzugs-strom	Kipp-moment	Trägheits-moment kg m <sup>2</sup>	Gewicht	
Type	Rated output	Rated speed	Current 13.8kV	Power factor	Efficiency %	Relative torque	Relative current	B-down Torque	Moment of inertia kg m <sup>2</sup>	Weight	
Type	Puissance nominale	Vitesse nominale	Intensité 13.8kV	Facteur de puissance	Rendement %	Couple démarrage	Courant démarrage	Couple maximal	Moment d'inertie kg m <sup>2</sup>	Masse	
	KW	1 / min	A	cos φ	%	MA / MN	Ia / In	MK / MN	Motor J Load	kg	
<b>6 Polig / 6 Poles / 6 Pôles</b>											
HJS400A-6	200	1187	16	0.80	91.8	1.0	6.3	2.1	18	380	3360
HJS400B-6	220	1184	17	0.80	92.1	1.0	6.1	2.1	19	390	3420
HJS400C-6	250	1184	19	0.82	92.1	1.1	6.0	2.1	20	400	3500
HJS400D-6	280	1184	21	0.82	92.2	1.1	5.9	2.1	21	410	3570
HJS400E-6	315	1183	24	0.83	92.5	0.8	5.9	2.1	22	420	3550
HJS450A-6	355	1188	26	0.84	92.7	0.7	5.8	2.1	31	800	4530
HJS450B-6	400	1188	30	0.83	93.0	0.7	5.9	2.1	33	810	4650
HJS450C-6	450	1188	33	0.84	93.4	0.7	6.2	2.1	36	620	4780
HJS450D-6	500	1188	37	0.84	93.5	0.7	5.6	2.1	36	640	4880
HJS450E-6	560	1189	41	0.83	94.0	0.7	6.0	2.1	38	660	5100
HJS500A-6	630	1187	44	0.87	94.1	0.9	5.8	2.3	42	710	5650
HJS500B-6	710	1187	50	0.87	94.2	0.9	5.9	2.3	46	873	5800
HJS500C-6	800	1187	56	0.88	94.2	0.9	5.8	2.3	54	891	6100
HJS500D-6	900	1188	63	0.87	94.3	1.0	6.3	2.5	57	930	6300
HJS560A-6	1000	1190	68	0.89	94.8	0.8	5.9	2.3	92	1100	7700
HJS560B-6	1120	1189	76	0.89	95.2	0.8	6.4	2.4	97	1200	8000
HJS560C-6	1250	1190	85	0.89	95.4	0.8	5.8	2.3	105	1300	8200
HJS630A-6	1400	1189	98	0.87	95.2	0.7	5.8	2.3	185	1400	9450
HJS630B-6	1600	1190	111	0.87	95.3	0.7	5.9	2.2	199	1500	9800
HJS630C-6	1800	1190	125	0.87	95.4	0.7	5.9	2.2	228	1600	10200
HJS630D-6	2000	1192	139	0.87	95.5	0.7	5.8	2.1	256	1700	11000
HJS630E-6	2240	1190	155	0.87	95.5	0.7	5.9	2.1	284	1800	11600
HJS710A-6	2500	1195	172	0.87	96.4	0.8	6.5	2.6	260	2000	14100
HJS710B-6	2800	1195	191	0.88	96.4	0.8	6.5	2.6	290	2200	14690
HJS710C-6	3150	1195	214	0.88	96.5	0.8	6.5	2.6	310	2500	15480
HJS800A-6	3550	1194	239	0.89	96.5	0.8	6.2	2.6	360	3560	18500
HJS800B-6	4000	1194	268	0.89	96.6	0.8	6.2	2.6	390	4210	19010
HJS800C-6	4500	1195	302	0.89	96.7	0.8	6.2	2.6	430	4540	19660
HJS900A-6	5000	1195	335	0.89	96.9	0.8	6.4	2.7	560	5430	24290
HJS900B-6	5600	1195	375	0.89	97.0	0.8	6.5	2.7	600	5860	25250
HJS900C-6	6300	1195	421	0.89	97.1	0.8	6.4	2.7	640	6260	26260
HJS1000A-6	7100	1196	474	0.89	97.2	0.7	6.3	2.5	1190	6750	32320
HJS1000B-6	8000	1196	534	0.89	97.2	0.7	6.4	2.5	1350	7270	33240
HJS1000C-6	9000	1195	600	0.89	97.3	0.7	6.1	2.4	1450	7740	34260
HJS1000D-6	10000	1195	666	0.89	97.4	0.7	6.1	2.4	1510	8140	35700





## DREHSTROM-HOCHSPANNUNGS-MOTOREN

Kühlart: IC611, Luft-Luft-Kühlung

### THREE - PHASE HIGH VOLTAGE MOTORS

Cooling Method: IC611, Air-Air

### MOTEURS DE HAUTE TENSION DE TROIS PHASE

Méthode de refroidissement IC611, air-air de refroidissement



#### 13.8kV - 60 Hz - CL F - IP55

Typ	Nennleistung	Nenn-drehzahl	N-strom 13.8kV	Leistungs-faktor	Wirkungs-grad	Anzugs-moment	Anzugs-strom	Kipp-moment	Trägheits-moment kg m2	Gewicht
Type	Rated output	Rated speed	Current 13.8kV	Power factor	Efficiency %	Relative torque	Relative current	B-down Torque	Moment of inertia kg m2	Weight
Type	Puissance nominale	Vitesse nominale	Intensité 13.8kV	Facteur de puissance	Rendement %	Couple démarrage	Courant démarrage	Couple maximal	Moment d'inertie kg m2	Masse

	KW	1 / min	A	cos φ	%	MA / MN	Ia / In	MK / MN	Motor	J Load	kg
--	----	---------	---	-------	---	---------	---------	---------	-------	--------	----

#### 8 Polig / 8 Poles / 8 Pôles

HJS450A-8	200	887	17	0.77	90.8	1.1	5.6	2.2	34	700	4500
HJS450B-8	220	887	18	0.79	91.4	1.1	5.7	2.2	35	750	4600
HJS450C-8	250	887	21	0.77	91.6	1.1	5.7	2.1	36	800	4720
HJS450D-8	280	887	22	0.79	92.1	1.1	5.7	2.1	37	850	4840
HJS450E-8	315	887	25	0.79	92.5	1.1	5.7	2.1	38	900	4960
HJS450F-8	355	887	28	0.79	92.6	1.1	5.8	2.1	39	930	5080
HJS450G-8	400	887	31	0.81	93.2	1.1	5.9	2.1	40	970	5100
HJS500A-8	450	888	34	0.81	93.3	0.8	5.6	2.2	55	1050	5600
HJS500B-8	500	889	38	0.82	93.4	0.8	5.8	2.2	61	1150	5750
HJS500C-8	560	889	43	0.81	93.6	0.9	6.1	2.4	70	1250	6050
HJS500D-8	630	890	48	0.82	93.8	0.9	6.2	2.4	80	1400	6400
HJS560A-8	710	890	52	0.84	93.9	1.1	6.0	2.5	95	1600	7400
HJS560B-8	800	890	58	0.84	94.2	1.1	5.9	2.4	103	1800	7600
HJS560C-8	900	890	66	0.84	94.3	1.1	5.8	2.4	110	2100	7900
HJS560D-8	1000	890	72	0.85	94.6	1.1	5.7	2.3	126	2300	8100
HJS630A-8	1120	893	80	0.85	95.0	0.7	5.6	2.2	188	2400	9200
HJS630B-8	1250	893	89	0.85	95.1	0.7	5.5	2.2	204	2520	9550
HJS630C-8	1400	893	100	0.85	95.2	0.8	5.8	2.3	227	2650	10000
HJS630D-8	1600	893	114	0.85	95.4	0.9	5.9	2.4	251	2800	10800
HJS710A-8	1800	895	134	0.81	95.8	0.9	5.8	2.5	260	5500	12940
HJS710B-8	2000	895	147	0.82	95.9	1.0	5.9	2.5	285	6110	13600
HJS710C-8	2240	896	164	0.82	95.9	1.0	6.2	2.5	320	6480	14450
HJS710D-8	2500	895	181	0.83	96.0	0.8	6.5	2.6	420	7590	15120
HJS800A-8	2800	895	203	0.83	96.1	0.9	6.5	2.7	470	8370	18820
HJS800B-8	3150	895	228	0.83	96.1	0.9	6.5	2.7	500	9030	19530
HJS900A-8	3550	895	253	0.84	96.3	0.8	5.7	2.3	740	9610	24200
HJS900B-8	4000	895	282	0.85	96.4	0.9	5.9	2.4	810	10790	25010
HJS900C-8	4500	895	317	0.85	96.5	0.9	6.2	2.5	910	11000	26030
HJS1000A-8	5000	896	347	0.86	96.5	0.7	6.3	2.6	1180	11380	31810
HJS1000B-8	5600	895	389	0.86	96.6	0.7	6.2	2.5	1260	12340	32620
HJS1000C-8	6300	895	432	0.87	96.7	0.7	6.0	2.4	1380	14450	33490
HJS1000D-8	7100	895	487	0.87	96.8	0.7	5.9	2.4	1500	15490	34900
HJS1120A-8	8000	896	548	0.87	96.9	0.7	6.1	2.4	1620	16000	38000
HJS1120B-8	9000	896	609	0.88	96.9	0.6	5.6	2.3	2130	16500	39110
HJS1120C-8	10000	896	680	0.88	96.9	0.6	5.6	2.3	2320	17130	40320
HJS1120D-8	11200	896	761	0.88	97.0	0.7	5.8	2.3	2510	18530	41430





**DREHSTROM-HOCHSPANNUNGS-MOTOREN**

Kühlart: IC611, Luft-Luft-Kühlung

**THREE - PHASE HIGH VOLTAGE MOTORS**

Cooling Method: IC611, Air-Air

**MOTEURS DE HAUTE TENSION DE TROIS PHASE**

Méthode de refroidissement IC611, air-air de refroidissement



**13.8kV - 60 Hz - CL F - IP55**

Typ	Nennleistung	Nenn-drehzahl	N-strom 13.8kV	Leistungs-faktor	Wirkungs-grad	Anzugs-moment	Anzugs-strom	Kipp-moment	Trägheits-moment kg m2	Gewicht
Type	Rated output	Rated speed	Current 13.8kV	Power factor	Efficiency %	Relative torque	Relative current	B-down Torque	Moment of inertia kg m2	Weight
Type	Puissance nominale	Vitesse nominale	Intensité 13.8kV	Facteur de puissance	Rendement %	Couple démarrage	Courant démarrage	Couple maximal	Moment d'inertie kg m2	Masse
	KW	1 / min	A	cos φ	%	MA / MN	Ia / In	MK / MN	Motor J Load	kg

**10 Polig / 10 Poles / 10 Pôles**

HJS450A-10	200	713	18	0.72	91.0	1.1	5.5	2.8	35	737	4550
HJS450B-10	220	712	19	0.74	91.3	1.1	5.4	2.6	37	788	4650
HJS450C-10	250	712	21	0.74	91.5	1.1	5.4	2.6	38	859	4750
HJS450D-10	280	712	24	0.74	91.7	1.1	5.4	2.6	40	990	4800
HJS450E-10	315	712	27	0.74	91.8	1.1	5.3	2.6	43	1170	4950
HJS500A-10	355	712	30	0.75	92.5	1.2	5.3	2.5	60	1624	5580
HJS500B-10	400	710	32	0.77	92.7	1.1	5.4	2.4	67	1751	5780
HJS500C-10	450	710	36	0.78	93.0	1.1	5.4	2.3	73	1880	6020
HJS500D-10	500	712	40	0.77	93.2	1.1	5.8	2.4	80	1905	6450
HJS560A-10	560	712	44	0.79	93.6	1.0	5.7	2.2	125	2196	7500
HJS560B-10	630	712	49	0.79	93.8	1.0	5.6	2.2	132	2508	7700
HJS560C-10	710	712	56	0.78	94.0	1.0	5.6	2.2	141	2811	7900
HJS560D-10	800	712	63	0.78	94.2	1.0	5.5	2.2	159	3242	8100
HJS630A-10	900	713	67	0.82	94.5	0.8	5.4	2.1	210	3400	8800
HJS630B-10	1000	713	75	0.82	94.5	0.9	5.3	2.2	240	3670	9100
HJS630C-10	1120	712	84	0.81	94.6	0.8	5.3	2.1	270	4250	9500
HJS630D-10	1250	713	94	0.81	94.8	0.8	5.3	2.2	305	4420	10100
HJS630E-10	1400	713	104	0.82	95.0	0.8	5.5	2.2	340	5000	10700
HJS710A-10	1600	715	123	0.79	95.4	0.9	5.8	2.3	370	8140	14110
HJS710B-10	1800	715	139	0.79	95.4	0.9	6.0	2.4	430	9010	14700
HJS710C-10	2000	715	151	0.81	95.5	0.9	5.9	2.4	530	11410	15330
HJS800A-10	2240	715	169	0.81	95.7	0.9	5.9	2.4	570	12310	18130
HJS800B-10	2500	715	187	0.81	95.8	0.9	5.9	2.3	620	13030	18920
HJS800C-10	2800	715	209	0.81	95.9	0.8	5.4	2.4	680	13590	19800
HJS900A-10	3150	715	234	0.81	96.0	0.8	5.3	2.3	750	14316	24570
HJS900B-10	3550	715	261	0.82	96.1	0.8	5.3	2.3	840	15380	25830
HJS1000A-10	4000	716	289	0.83	96.2	0.6	5.7	2.5	1420	17140	30980
HJS1000B-10	4500	715	320	0.84	96.3	0.6	5.4	2.4	1510	18340	31920
HJS1000C-10	5000	716	356	0.84	96.4	0.7	5.7	2.6	1650	20270	32890
HJS1000D-10	5600	715	399	0.84	96.4	0.6	5.5	2.4	1790	22840	34050
HJS1120A-10	6300	715	443	0.85	96.5	0.6	5.5	2.4	1930	23910	38270
HJS1120B-10	7100	716	499	0.85	96.6	0.6	5.4	2.3	2320	24150	39230
HJS1120C-10	8000	716	562	0.85	96.6	0.6	5.4	2.3	2460	25830	40350
HJS1120D-10	9000	716	625	0.86	96.7	0.6	5.2	2.2	2660	27750	41680





## DREHSTROM-HOCHSPANNUNGS-MOTOREN

Kühlart: IC611, Luft-Luft-Kühlung

## THREE - PHASE HIGH VOLTAGE MOTORS

Cooling Method: IC611, Air-Air

## MOTEURS DE HAUTE TENSION DE TROIS PHASE

Méthode de refroidissement IC611, air-air de refroidissement



### 13.8kV - 60 Hz - CL F - IP55

Type	Nennleistung	Nenn-drehzahl	N-strom 13.8kV	Leistungs-faktor	Wirkungs-grad	Anzugs-moment	Anzugs-strom	Kipp-moment	Trägheits-moment kg m2	Gewicht
Type	Rated output	Rated speed	Current 13.8kV	Power factor	Efficiency %	Relative torque	Relative current	B-down Torque	Moment of inertia kg m2	Weight
Type	Puissance nominale	Vitesse nominale	Intensité 13.8kV	Facteur de puissance	Rendement %	Couple démarrage	Courant démarrage	Couple maximal	Moment d'inertie kg m2	Masse
	KW	1 / min	A	cos φ	%	MA / MN	Ia / In	MK / MN	Motor J Load	kg

### 12 Polig / 12 Poles / 12 Pôles

HJS500A-12	200	595	18	0.67	91.0	1.0	5.5	2.9	53	1032	5600
HJS500B-12	220	595	19	0.72	91.3	1.0	5.5	2.8	57	1207	5720
HJS500C-12	250	594	22	0.72	91.7	1.0	5.5	2.8	62	1442	5900
HJS500D-12	280	595	24	0.73	91.7	1.1	5.5	2.8	67	1531	6050
HJS500E-12	315	595	27	0.73	92.1	1.3	5.5	2.7	76	1747	6280
HJS560A-12	355	593	30	0.74	93.1	0.9	4.8	2.2	123	2329	6900
HJS560B-12	400	593	33	0.74	93.3	0.9	4.8	2.2	133	2553	7000
HJS560C-12	450	594	37	0.75	93.7	0.9	4.8	2.2	142	2978	7200
HJS560D-12	500	594	42	0.74	93.7	1.0	5.1	2.4	152	4039	7300
HJS560E-12	560	593	46	0.75	93.9	0.9	4.6	2.1	158	4543	7500
HJS560F-12	630	594	53	0.74	94.0	0.9	4.8	2.2	170	5014	7700
HJS630A-12	710	593	57	0.77	94.2	0.9	5.4	2.2	265	5200	9100
HJS630B-12	800	593	63	0.78	94.3	0.8	5.3	2.2	277	5600	9400
HJS630C-12	900	593	71	0.78	94.4	0.9	5.3	2.1	304	6100	9600
HJS630D-12	1000	594	79	0.77	94.5	0.9	5.2	2.2	313	6400	10400
HJS710A-12	1120	595	91	0.75	94.9	0.9	6.0	2.5	290	7050	13200
HJS710B-12	1250	595	100	0.76	95.0	1.0	6.0	2.4	330	8000	13900
HJS710C-12	1400	595	112	0.76	95.1	1.0	6.0	2.5	360	9030	14330
HJS800A-12	1600	596	126	0.77	95.5	1.0	6.0	2.6	560	10030	17780
HJS800B-12	1800	596	141	0.77	95.5	1.0	6.0	2.6	600	11000	18300
HJS800C-12	2000	596	155	0.78	95.6	1.0	6.0	2.6	660	12100	18930
HJS900A-12	2240	595	171	0.79	95.6	0.9	6.0	2.6	920	12870	23480
HJS900B-12	2500	595	191	0.79	95.6	0.9	6.0	2.7	1000	14400	24350
HJS1000A-12	2800	595	214	0.79	95.7	0.9	6.0	2.6	1460	21980	28880
HJS1000B-12	3150	596	237	0.80	95.8	0.9	5.9	2.5	1570	24510	29660
HJS1000C-12	3550	595	267	0.80	95.9	0.9	5.9	2.5	1720	26430	30580
HJS1000D-12	4000	595	300	0.80	96.0	0.9	6.0	2.5	1880	28410	31800
HJS1000E-12	4500	595	338	0.80	96.0	1.0	6.1	2.6	2080	31190	33190
HJS1120A-12	5000	596	376	0.80	96.0	0.8	5.8	2.6	2390	32460	35640
HJS1120B-12	5600	596	421	0.80	96.0	0.8	5.7	2.5	2620	33860	36830
HJS1120C-12	6300	596	467	0.81	96.1	0.8	5.8	2.5	2840	36300	37920
HJS1120D-12	7100	596	526	0.81	96.2	0.8	5.8	2.5	3130	38830	39240





## DREHSTROM-HOCHSPANNUNGS-MOTOREN

Kühlart: IC611, Luft-Luft-Kühlung

## THREE - PHASE HIGH VOLTAGE MOTORS

Cooling Method: IC611, Air-Air

## MOTEURS DE HAUTE TENSION DE TROIS PHASE

Méthode de refroidissement IC611, air-air de refroidissement



### 13.8kV - 60 Hz - CL F - IP55

Type	Nennleistung	Nenn-drehzahl	N-strom 13.8kV	Leistungs-faktor	Wirkungs-grad	Anzugs-moment	Anzugs-strom	Kipp-moment	Trägheits-moment kg m2	Gewicht
Type	Rated output	Rated speed	Current 13.8kV	Power factor	Efficiency %	Relative torque	Relative current	B-down Torque	Moment of inertia kg m2	Weight
Type	Puissance nominale	Vitesse nominale	Intensité 13.8kV	Facteur de puissance	Rendement %	Couple démarrage	Courant démarrage	Couple maximal	Moment d'inertie kg m2	Masse
	KW	1 / min	A	cos φ	%	MA / MN	Ia / In	MK / MN	Motor J Load	kg

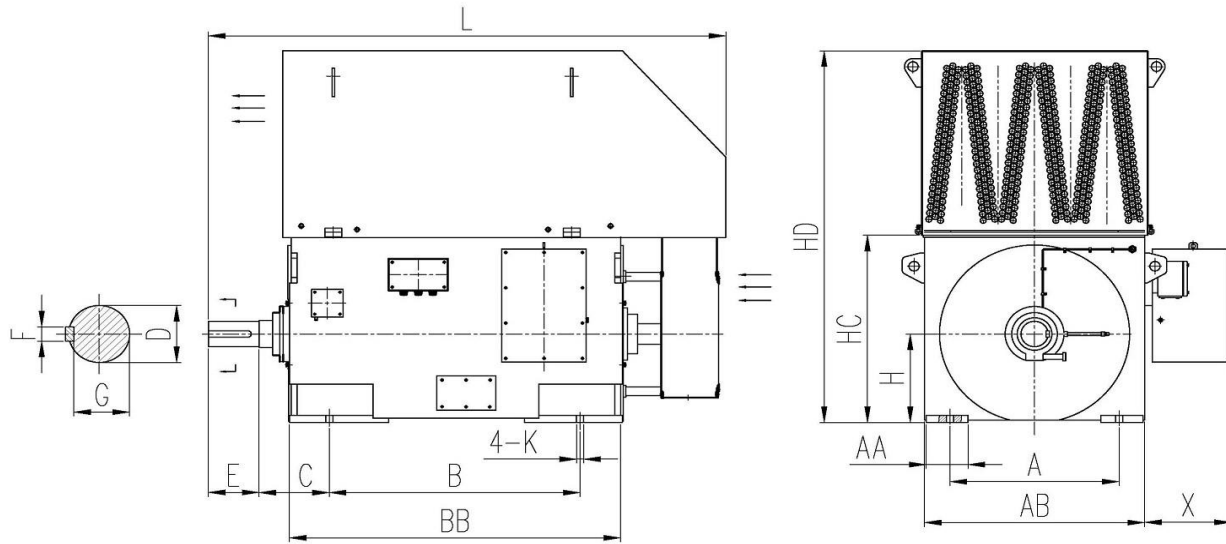
### 16 Polig / 16 Poles / 16 Pôles

HJS710A-16	630	467	55	0.72	92.7	1.1	5.2	2.6	307	12350	12800
HJS710B-16	710	467	61	0.73	92.9	1.1	5.4	2.5	352	13690	13250
HJS710C-16	800	467	68	0.73	93.1	1.1	5.4	2.6	397	15080	13710
HJS710D-16	900	444	78	0.72	93.2	1.0	5.6	2.7	456	16570	14250
HJS800A-16	1000	445	88	0.70	94.1	1.0	5.5	2.9	620	21680	17970
HJS800B-16	1120	444	98	0.70	94.2	1.0	5.5	2.8	660	23430	18390
HJS800C-16	1250	445	108	0.71	94.2	1.0	5.5	2.9	730	25220	18840
HJS900A-16	1400	445	120	0.72	94.3	1.0	5.4	2.8	920	19730	22870
HJS900B-16	1600	445	136	0.72	94.4	1.0	5.4	2.8	1000	21280	23530
HJS900C-16	1800	445	155	0.71	94.4	1.0	5.6	2.9	1090	23610	24120
HJS1000A-16	2000	445	161	0.75	94.5	1.0	5.3	2.4	1234	24000	27500
HJS1000B-16	2240	445	179	0.75	94.6	1.0	5.3	2.4	1334	26000	28650
HJS1000C-16	2500	445	201	0.76	94.7	1.0	5.4	2.4	1550	28000	30200
HJS1000D-16	2800	445	226	0.75	94.8	1.1	5.6	2.6	1696	32980	31450
HJS1000E-16	3150	445	254	0.75	95.1	1.1	6.0	2.9	1990	35980	32360
HJS1120A-16	3550	445	279	0.77	95.7	1.0	5.6	2.6	2380	54200	35140
HJS1120B-16	4000	445	309	0.78	95.8	0.9	5.4	2.5	2600	59200	36490
HJS1120C-16	4500	445	344	0.79	95.9	0.9	5.3	2.4	2820	68420	37630
HJS1120D-16	5000	445	382	0.79	96.0	0.9	5.3	2.4	3040	72840	38980





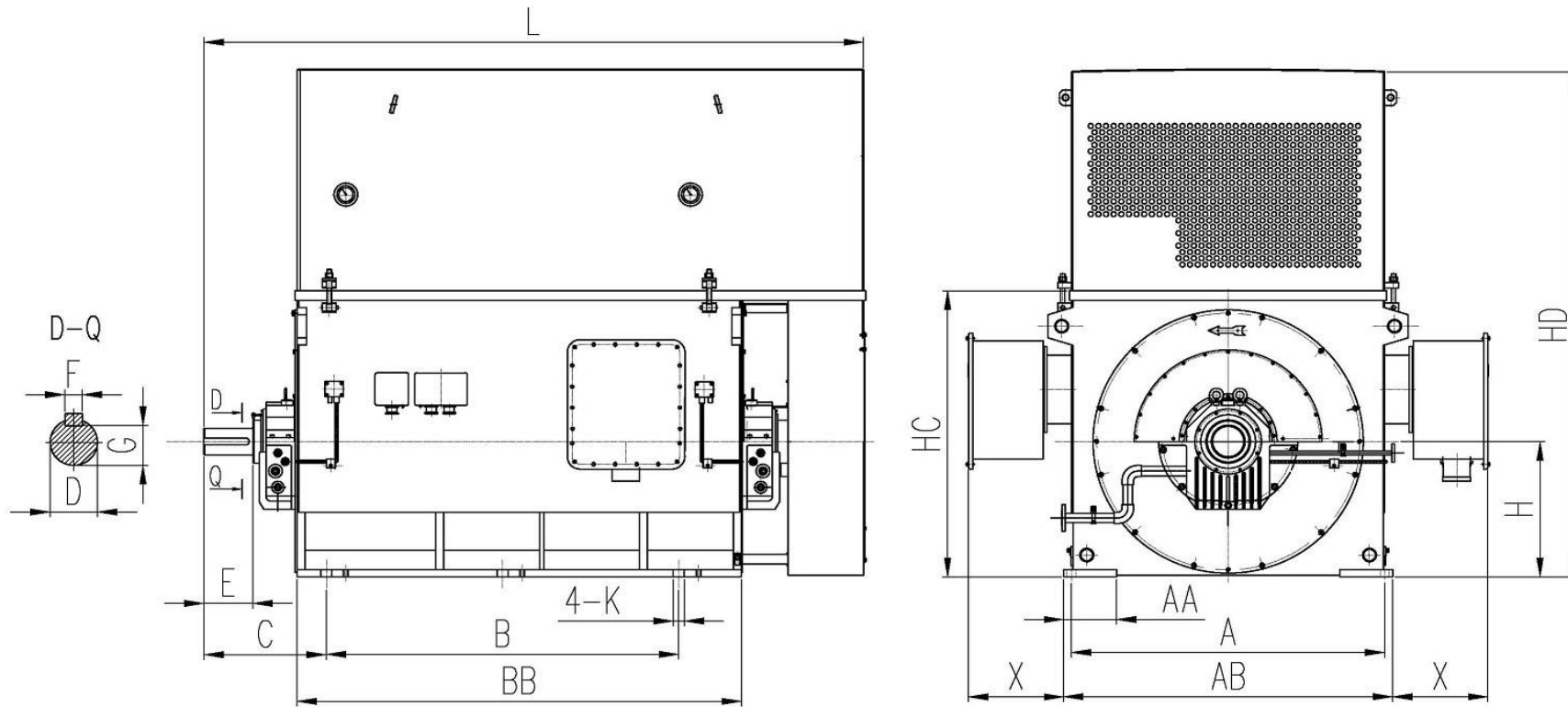
Overall mounting dimensions for HJS (4.16kV / 6.6kV / 13.8kV) series of high-voltage three-phase induction motors.



Frame	A	AA	AB	B	BB	C	D	E	F	G	H	HC	HD	K	L	X
HJS355 2	630	160	800	900	1420	315	80	170	22	71	355	755	1250	28	2200	510
HJS355 4-8	630	160	800	900	1420	315	100	210	28	90	355	755	1250	28	2200	510
HJS400 2	710	170	900	1000	1570	335	90	170	25	81	400	850	1350	35	2400	510
HJS400 4-8	710	170	900	1000	1570	335	110	210	28	100	400	850	1350	35	2400	510
HJS450 2	800	190	1000	1120	1720	355	100	210	28	90	450	950	1550	35	2600	510
HJS450 4	800	190	1000	1120	1720	355	120	210	32	109	450	950	1550	35	2600	510
HJS450 6-12	800	190	1000	1120	1720	355	130	250	32	119	450	950	1550	35	2600	510
HJS500 2	900	200	1120	1250	1820	475	110	210	28	100	500	1060	1700	42	2900	510
HJS500 4	900	200	1120	1250	1820	475	130	250	32	119	500	1060	1700	42	2900	510
HJS500 6-12	900	200	1120	1250	1820	475	140	250	36	128	500	1060	1700	42	2900	510
HJS560 2	1000	230	1250	1400	1970	500	130	250	32	119	560	1185	1850	42	3200	560
HJS560 4	1000	230	1250	1400	1970	500	150	250	36	138	560	1185	1850	42	3200	560
HJS560 6-12	1000	230	1250	1400	1970	500	160	300	40	147	560	1185	1850	42	3200	560
HJS630 2	1120	240	1400	1600	2120	530	140	250	36	128	630	1330	2700	48	3500	560
HJS630 4	1120	240	1400	1600	2120	530	170	300	40	157	630	1330	2700	48	3500	560
HJS630 6-12	1120	240	1400	1600	2120	530	180	300	45	165	630	1330	2700	48	3500	560



Overall mounting dimensions for HJS (4.16kV / 6.6kV / 13.8kV) series of high-voltage three-phase induction motors.



Frame	A	B	C	AB	AA	BB	D	E	F	G	H	K	HC	HD	L	X
HJS710 2-16	1400	1800	530	1600	262	2150/2330	200	350	45	185	710	56	1510	2960	3850	600
HJS800 2-16	1600	2000	560	1800	292	2350/2500	220	350	50	203	800	56	1700	3175	4050	600
HJS900 2-16	1800	2000/2200	560	2000	302	2500/2700	250	410	56	230	900	66	1900	3420	4500	600
HJS1000 2-16	2000	2000/2200	630	2240	332	2500/2900	280	470	63	260	1000	66	2120	3720	4550	600
HJS1120 2-16	2240	2200/2500	630	2500	402	2700/3200	320	470	70	298	1120	74	2370	4190	4800	600