



DREHSTROM-HOCHSPANNUNGS-MOTOREN

Kühlart: IC611, Luft-Luft-Kühlung

THREE - PHASE HIGH VOLTAGE MOTORS

Cooling Method: IC611, Air-Air

MOTEURS DE HAUTE TENSION DE TROIS PHASE

Méthode de refroidissement IC611, air-air de refroidissement

6.6 kV - 60 Hz - CL F - IP55



Typ	Nennleistung	Nenn-drehzahl	N-strom 6.6 kV	Leistungs- faktor	Wirkungs- grad	Anzugs- moment	Anzugs- strom	Kipp- moment	Gewicht
Type	Rated output	Rated speed	Current 6.6 kV	Power factor	Efficiency %	Relative torque	Relative current	B-down Torque	Weight
Type	Puissance nominale	Vitesse nominale	Intensité 6.6 kV	Facteur de puissance	Rendement %	Couple démarrage	Courant démarrage	Couple maximal	Masse
	KW	1 / min	A	cos φ	%	MA / MN	Ia / In	MK / MN	kg

2 Polig / 2 Poles / 2 Pôles

HJS355A-2	220	3568	24.5	0.85	92.5	0.6	7.0	1.8	2250
HJS355B-2	250	3566	27.8	0.85	92.6	0.6	7.0	1.8	2300
HJS355C-2	280	3568	31.1	0.85	92.8	0.6	7.0	1.8	2350
HJS355D-2	315	3570	34.9	0.85	93.1	0.6	7.0	1.8	2400
HJS400B-2	355	3572	38.7	0.86	93.4	0.6	7.0	1.8	2700
HJS400C-2	400	3571	43.5	0.86	93.7	0.6	7.0	1.8	2780
HJS400D-2	450	3570	48.8	0.86	94.0	0.6	7.0	1.8	2900
HJS400E-2	500	3571	54.1	0.86	94.2	0.6	7.0	1.8	2950
HJS450B-2	560	3576	60.4	0.86	94.4	0.6	7.0	1.8	4000
HJS450C-2	630	3576	67.0	0.87	94.6	0.6	7.0	1.8	4300
HJS450D-2	710	3577	75.5	0.87	94.7	0.6	7.0	1.8	4600
HJS450E-2	800	3580	85.0	0.87	94.8	0.6	7.0	1.8	4900
HJS500A-2	900	3577	95.4	0.87	95.0	0.6	7.0	1.8	5200
HJS500B-2	1000	3580	105.9	0.87	95.1	0.6	7.0	1.8	5440
HJS500C-2	1120	3578	118.4	0.87	95.2	0.6	7.0	1.8	5650
HJS500D-2	1250	3576	132.0	0.87	95.3	0.6	7.0	1.8	5880
HJS560A-2	1400	3576	146.1	0.88	95.4	0.6	7.0	1.8	6800
HJS560B-2	1600	3575	166.7	0.88	95.5	0.6	7.0	1.8	6900
HJS560C-2	1800	3578	187.4	0.88	95.6	0.6	7.0	1.8	7160
HJS630A-2	2000	3578	208.0	0.88	95.7	0.6	7.0	1.8	9450
HJS630B-2	2240	3578	232.7	0.88	95.8	0.6	7.0	1.8	9850
HJS630C-2	2500	3578	259.4	0.88	95.9	0.6	7.0	1.8	10250
HJS710A-2	2800	3579	287.0	0.89	96.0	0.6	7.0	1.8	15250
HJS710B-2	3150	3589	322.6	0.89	96.1	0.6	7.0	1.8	15800
HJS710C-2	3550	3591	363.1	0.89	96.2	0.6	7.0	1.8	16200
HJS710D-2	4000	3593	408.7	0.89	96.3	0.6	7.0	1.8	16850
HJS800A-2	4500	3595	459.4	0.89	96.4	0.6	7.0	1.8	22300
HJS800B-2	5000	3595	509.9	0.89	96.5	0.6	7.0	1.8	23500
HJS800C-2	5600	3595	570.5	0.89	96.6	0.6	7.0	1.8	25100



DREHSTROM-HOCHSPANNUNGS-MOTOREN

Kühlart: IC611, Luft-Luft-Kühlung

THREE - PHASE HIGH VOLTAGE MOTORS

Cooling Method: IC611, Air-Air

MOTEURS DE HAUTE TENSION DE TROIS PHASE

Méthode de refroidissement IC611, air-air de refroidissement


6.6kV - 60 Hz - CL F - IP55

Typ	Nennleistung	Nenn-drehzahl	N-strom 6.6kV	Leistungs-faktor	Wirkungs-grad	Anzugs-moment	Anzugs-strom	Kipp-moment	Trägheits-moment kg m ²	Gewicht
Type	Rated output	Rated speed	Current 6.6kV	Power factor	Efficiency %	Relative torque	Relative current	B-down Torque	Moment of inertia kg m ²	Weight
Type	Puissance nominale	Vitesse nominale	Intensité 6.6kV	Facteur de puissance	Rendement %	Couple démarrage	Courant démarrage	Couple maximal	Moment d'inertie kg m ²	Masse
	kW	1/min	A	cos φ	%	Ma/Mn	Ia/In	MK/MN	Motor J Load	kg

4 Polig / 4 Poles / 4 Pôles

HJS355A-4	185	1782	23	0.84	92.8	0.9	6.2	2.4	9	120	2400
HJS355B-4	200	1781	24	0.85	92.9	0.9	6.1	2.4	9	130	2500
HJS355C-4	220	1780	26	0.87	93.1	0.8	6.0	2.3	10	140	2560
HJS355D-4	250	1781	30	0.85	93.1	0.8	6.1	2.4	10	150	2640
HJS355E-4	280	1782	34	0.86	93.3	0.9	6.2	2.5	10	160	2700
HJS355F-4	315	1782	38	0.85	93.6	0.9	6.3	2.6	11	170	2780
HJS355G-4	355	1784	43	0.85	93.9	0.9	6.5	2.6	12	180	2880
HJS400A-4	400	1781	47	0.87	93.9	0.8	6.2	2.4	19	220	3370
HJS400B-4	450	1780	52	0.88	94.0	0.8	6.1	2.2	21	240	3510
HJS400C-4	500	1782	58	0.88	94.2	0.9	6.2	2.3	22	255	3630
HJS400D-4	560	1782	65	0.88	94.5	0.9	6.3	2.4	24	270	3750
HJS450A-4	630	1784	73	0.88	94.3	0.7	6.2	2.3	26	280	4750
HJS450B-4	710	1783	82	0.88	94.6	0.7	6.3	2.3	28	290	4880
HJS450C-4	800	1783	92	0.88	94.9	0.7	6.2	2.3	30	300	5000
HJS450D-4	900	1784	104	0.88	95.2	0.7	6.3	2.3	32	310	5150
HJS500A-4	1000	1784	112	0.90	94.9	0.7	5.9	2.2	35	350	5600
HJS500B-4	1120	1786	125	0.91	95.1	0.7	6.1	2.3	36	360	5850
HJS500C-4	1250	1787	140	0.90	95.3	0.8	6.3	2.3	37	370	6000
HJS500D-4	1400	1787	156	0.91	95.4	0.8	6.7	2.4	38	380	6300
HJS560A-4	1600	1789	179	0.90	95.4	0.7	6.4	2.4	73	380	8500
HJS560B-4	1800	1789	201	0.90	95.5	0.7	6.3	2.4	76	390	8700
HJS560C-4	2000	1789	223	0.90	95.6	0.7	6.4	2.5	80	400	8900
HJS630A-4	2240	1787	245	0.91	95.7	0.7	6.1	2.5	125	580	9700
HJS630B-4	2500	1788	276	0.91	95.8	0.7	6.3	2.5	134	630	10100
HJS630C-4	2800	1789	309	0.91	95.9	0.7	6.4	2.5	153	380	10800
HJS630D-4	3150	1792	347	0.91	96.1	0.6	6.4	2.4	173	800	11600
HJS710A-4	3550	1792	393	0.90	96.6	0.6	5.9	2.3	170	2010	14620
HJS710B-4	4000	1792	442	0.90	96.7	0.6	5.8	2.3	190	2220	15340
HJS710C-4	4500	1793	503	0.89	96.7	0.7	6.1	2.4	220	2450	15780
HJS800A-4	5000	1793	558	0.89	96.8	0.7	5.7	2.4	270	2610	18780
HJS800B-4	5600	1793	625	0.90	96.8	0.7	5.8	2.5	300	2820	19230
HJS800C-4	6300	1793	697	0.90	96.9	0.7	6.0	2.5	320	2970	20140
HJS900A-4	7100	1793	783	0.90	97.0	0.7	5.6	2.2	410	3100	24300
HJS900B-4	8000	1793	882	0.90	97.0	0.7	5.9	2.3	450	3300	25120
HJS900C-4	9000	1794	991	0.90	97.1	0.8	5.8	2.3	510	3410	26030
HJS1000A-4	10000	1794	1112	0.89	97.2	0.5	6.4	2.5	950	3650	32940
HJS1000B-4	11200	1794	1246	0.89	97.2	0.6	6.9	2.7	980	3850	33870
HJS1000C-4	12500	1793	1389	0.89	97.3	0.5	5.7	2.2	1080	4090	34570
HJS1000D-4	14000	1794	1554	0.90	97.3	0.6	6.0	2.3	1180	4270	35320
HJS1000E-4	16000	1794	1756	0.90	97.4	0.6	6.5	2.5	1240	4480	36900





DREHSTROM-HOCHSPANNUNGS-MOTOREN

Kühlart: IC611, Luft-Luft-Kühlung

THREE - PHASE HIGH VOLTAGE MOTORS

Cooling Method: IC611, Air-Air

MOTEURS DE HAUTE TENSION DE TROIS PHASE

Méthode de refroidissement IC611, air-air de refroidissement



6.6kV - 60 Hz - CL F - IP55

Typ	Nennleistung	Nenn-drehzahl	N-strom 6.6kV	Leistungs-faktor	Wirkungs-grad	Anzugs-moment	Anzugs-strom	Kipp-moment	Trägheits-moment kg m2	Gewicht	
Type	Rated output	Rated speed	Current 6.6kV	Power factor	Efficiency %	Relative torque	Relative current	B-down Torque	Moment of inertia kg m2	Weight	
Type	Puissance nominale	Vitesse nominale	Intensité 6.6kV	Facteur de puissance	Rendement %	Couple démarrage	Courant démarrage	Couple maximal	Moment d'inertie kg m2	Masse	
	KW	1 / min	A	cos φ	%	MA / MN	Ia / In	MK / MN	Motor J Load	kg	
6 Polig / 6 Poles / 6 Pôles											
HJS355A-6	185	1181	24	0.81	92.2	1.1	5.5	2.3	15	320	2550
HJS355B-6	200	1182	25	0.82	92.5	1.1	5.6	2.3	16	330	2650
HJS355C-6	220	1183	28	0.82	92.7	1.1	5.7	2.3	17	340	2720
HJS355D-6	250	1183	30	0.81	92.7	1.2	5.9	2.4	18	350	2800
HJS400A-6	280	1182	34	0.86	93.1	0.9	5.6	2.0	18	400	3350
HJS400B-6	315	1183	38	0.86	93.4	0.9	5.5	2.0	19	420	3490
HJS400C-6	355	1183	43	0.86	93.7	0.9	5.4	2.0	20	440	3620
HJS400D-6	400	1184	48	0.85	93.9	0.9	5.5	2.0	21	460	3750
HJS450A-6	450	1186	53	0.88	94.1	0.8	5.5	2.0	35	580	4880
HJS450B-6	500	1186	59	0.87	94.4	0.8	5.6	2.0	37	600	4800
HJS450C-6	560	1186	66	0.87	94.7	0.8	5.6	2.0	40	620	4920
HJS450D-6	630	1186	74	0.87	94.9	0.9	5.8	2.0	42	667	5150
HJS500A-6	710	1189	83	0.87	94.8	0.8	5.9	2.2	43	705	5600
HJS500B-6	800	1189	94	0.87	94.9	0.9	5.9	2.2	45	720	5750
HJS500C-6	900	1189	104	0.87	95.0	0.9	6.0	2.3	52	770	6000
HJS500D-6	1000	1189	116	0.88	95.1	0.9	6.4	2.3	55	800	6250
HJS560A-6	1120	1190	131	0.87	95.2	0.7	5.8	2.3	94	1050	7800
HJS560B-6	1250	1189	145	0.87	95.3	0.7	5.9	2.4	110	1150	8100
HJS560C-6	1400	1190	163	0.87	95.4	0.8	6.4	2.5	125	1248	8300
HJS630A-6	1600	1192	185	0.87	95.6	0.7	6.1	2.3	171	1400	9450
HJS630B-6	1800	1192	208	0.87	95.7	0.7	6.2	2.2	199	1500	9800
HJS630C-6	2000	1192	231	0.87	95.9	0.8	6.2	2.2	213	1600	10200
HJS630D-6	2240	1192	258	0.87	96.1	0.7	5.9	2.1	242	1750	11000
HJS710A-6	2500	1190	286	0.87	96.5	0.8	6.2	2.5	230	2720	13420
HJS710B-6	2800	1190	321	0.87	96.5	0.8	6.3	2.6	260	2870	13980
HJS710C-6	3150	1190	361	0.87	96.6	0.8	6.4	2.7	280	3010	14560
HJS710D-6	3550	1190	406	0.87	96.7	0.8	6.3	2.6	305	3280	15300
HJS800A-6	4000	1192	457	0.87	96.7	0.7	6.5	2.3	360	3780	18390
HJS800B-6	4500	1192	514	0.87	96.7	0.7	6.4	2.3	380	4140	18870
HJS800C-6	5000	1192	571	0.87	96.8	0.8	6.5	2.4	430	4480	19500
HJS900A-6	5600	1192	639	0.88	96.9	0.7	6.0	2.5	560	5200	24150
HJS900B-6	6300	1194	710	0.88	97.0	0.8	6.5	2.7	630	5880	25030
HJS900C-6	7100	1194	800	0.89	97.0	0.9	6.2	2.6	665	6140	25980
HJS1000A-6	8000	1195	890	0.89	97.2	0.7	6.0	2.4	1180	6270	32130
HJS1000B-6	9000	1195	1001	0.89	97.2	0.7	6.0	2.4	1280	6740	32980
HJS1000C-6	10000	1195	1111	0.89	97.3	0.7	6.1	2.4	1420	7260	33990
HJS1000D-6	11200	1195	1244	0.90	97.3	0.8	6.3	2.4	1570	8220	35450





DREHSTROM-HOCHSPANNUNGS-MOTOREN

Kühlart: IC611, Luft-Luft-Kühlung

THREE - PHASE HIGH VOLTAGE MOTORS

Cooling Method: IC611, Air-Air

MOTEURS DE HAUTE TENSION DE TROIS PHASE

Méthode de refroidissement IC611, air-air de refroidissement



6.6kV - 60 Hz - CL F - IP55

Typ	Nennleistung	Nenn-drehzahl	N-strom 6.6kV	Leistungs-faktor	Wirkungs-grad	Anzugs-moment	Anzugs-strom	Kipp-moment	Trägheits-moment kg m2	Gewicht
Type	Rated output	Rated speed	Current 6.6kV	Power factor	Efficiency %	Relative torque	Relative current	B-down Torque	Moment of inertia kg m2	Weight
Type	Puissance nominale	Vitesse nominale	Intensité 6.6kV	Facteur de puissance	Rendement %	Couple démarrage	Courant démarrage	Couple maximal	Moment d'inertie kg m2	Masse
	KW	1 / min	A	cos φ	%	MA / MN	Ia / In	MK / MN	Motor J Load	kg

8 Polig / 8 Poles / 8 Pôles

HJS400A-8	185	887	24	0.79	92.6	1.2	6.0	2.2	22	600	3250
HJS400B-8	200	886	26	0.80	92.5	1.3	5.8	2.3	23	620	3350
HJS400C-8	220	887	30	0.77	92.5	1.3	5.7	2.3	24	640	3400
HJS400D-8	250	886	33	0.79	92.8	1.2	5.6	2.2	26	660	3550
HJS400E-8	280	886	36	0.80	93.1	1.1	5.5	2.2	26	680	3650
HJS400F-8	315	886	40	0.81	93.5	1.1	5.4	2.1	27	700	3750
HJS450A-8	355	889	43	0.80	93.5	0.8	5.6	2.3	37	900	4780
HJS450B-8	400	889	48	0.81	93.6	0.8	5.5	2.3	38	1000	4860
HJS450C-8	450	893	54	0.82	94.1	0.8	5.5	2.1	39	1100	4950
HJS450D-8	500	893	60	0.81	94.2	0.9	5.5	2.1	40	1200	5000
HJS500A-8	560	888	66	0.86	94.4	1.0	5.5	2.1	55	1500	5550
HJS500B-8	630	888	74	0.86	94.6	0.9	5.5	2.1	60	1600	5700
HJS500C-8	710	888	84	0.86	94.8	1.0	5.9	2.1	68	1800	6000
HJS500D-8	800	888	93	0.87	95.0	0.9	5.4	2.1	75	1950	6300
HJS560A-8	900	890	107	0.85	94.9	1.0	5.8	2.3	121	2000	7800
HJS560B-8	1000	892	119	0.85	95.0	1.0	5.9	2.4	130	2100	8000
HJS560C-8	1120	890	133	0.85	95.2	0.9	5.7	2.3	139	2300	8200
HJS630A-8	1250	892	148	0.86	95.3	0.7	5.4	2.1	224	2300	9200
HJS630B-8	1400	892	164	0.86	95.4	0.8	5.6	2.2	242	2500	9550
HJS630C-8	1600	892	187	0.86	95.5	0.7	5.6	2.2	259	2800	10000
HJS630D-8	1800	893	213	0.85	95.6	0.7	5.7	2.1	293	3000	10800
HJS710A-8	2000	894	245	0.82	95.9	0.7	5.8	2.4	265	5420	13620
HJS710B-8	2240	894	274	0.82	96.0	0.7	5.7	2.3	300	5990	14370
HJS710C-8	2500	895	305	0.82	96.0	0.7	5.7	2.3	330	6580	15180
HJS800A-8	2800	894	334	0.84	96.1	0.7	5.8	2.4	390	7200	18240
HJS800B-8	3150	894	375	0.84	96.2	0.7	5.9	2.5	440	7910	18650
HJS800C-8	3550	894	423	0.84	96.2	0.8	5.6	2.4	480	8960	19370
HJS900A-8	4000	894	465	0.86	96.3	0.9	5.7	2.3	670	9470	24020
HJS900B-8	4500	894	529	0.85	96.3	0.9	5.7	2.4	740	10230	24830
HJS900C-8	5000	894	580	0.86	96.4	0.9	5.9	2.4	800	11020	25880
HJS1000A-8	5600	895	642	0.87	96.4	0.9	5.9	2.6	1140	11080	31670
HJS1000B-8	6300	895	723	0.87	96.4	0.9	6.1	2.5	1300	12160	32470
HJS1000C-8	7100	895	814	0.87	96.5	0.9	6.0	2.6	1380	13300	33240
HJS1000D-8	8000	895	916	0.87	96.6	0.9	6.2	2.7	1540	15390	34650
HJS1000E-8	9000	895	1030	0.87	96.6	0.9	5.9	2.8	1660	16500	36070
HJS1120A-8	10000	896	1130	0.88	96.8	0.9	5.7	2.6	2170	17030	38900
HJS1120B-8	11200	896	1264	0.88	96.9	0.8	5.6	2.5	2300	17290	40110
HJS1120C-8	12500	896	1410	0.88	96.9	0.9	5.6	2.6	2480	18390	41200
HJS1120D-8	14000	896	1579	0.88	97.0	0.9	5.8	2.7	2670	20090	42760





DREHSTROM-HOCHSPANNUNGS-MOTOREN

Kühlart: IC611, Luft-Luft-Kühlung

THREE - PHASE HIGH VOLTAGE MOTORS

Cooling Method: IC611, Air-Air

MOTEURS DE HAUTE TENSION DE TROIS PHASE

Méthode de refroidissement IC611, air-air de refroidissement



6.6kV - 60 Hz - CL F - IP55

Type	Nennleistung	Nenn-drehzahl	N-strom 6.6kV	Leistungs-faktor	Wirkungs-grad	Anzugs-moment	Anzugs-strom	Kipp-moment	Trägheits-moment kg m2	Gewicht
Type	Rated output	Rated speed	Current 6.6kV	Power factor	Efficiency %	Relative torque	Relative current	B-down Torque	Moment of inertia kg m2	Weight
Type	Puissance nominale	Vitesse nominale	Intensité 6.6kV	Facteur de puissance	Rendement %	Couple démarrage	Courant démarrage	Couple maximal	Moment d'inertie kg m2	Masse

	KW	1 / min	A	cos φ	%	MA / MN	la / ln	MK / MN	Motor	J Load	kg
--	----	---------	---	-------	---	---------	---------	---------	-------	--------	----

10 Polig / 10 Poles / 10 Pôles

HJS400A-10	185	704	25	0.77	91.3	0.7	5.5	1.8	26	750	4700
HJS400B-10	200	706	28	0.76	91.5	0.8	5.5	1.8	28	800	4800
HJS400C-10	220	706	30	0.76	91.9	0.8	5.5	1.8	30	900	4900
HJS450A-10	250	708	33	0.80	92.2	0.9	5.4	2.4	42	1000	4550
HJS450B-10	280	708	36	0.81	92.5	0.8	5.5	2.3	44	1100	4650
HJS450C-10	315	708	40	0.81	92.7	0.8	5.4	2.3	46	1200	4750
HJS450D-10	355	708	45	0.81	93.0	1.1	5.0	2.3	48	1300	4850
HJS500A-10	400	710	52	0.79	93.5	1.1	5.3	2.2	56	2272	5520
HJS500B-10	450	710	59	0.79	93.5	1.0	5.1	2.1	60	2532	5730
HJS500C-10	500	712	65	0.79	93.8	1.0	5.3	2.2	71	2839	6000
HJS500D-10	560	712	73	0.79	93.9	1.0	5.3	2.2	76	3034	6200
HJS500E-10	630	710	80	0.81	94.1	0.9	5.1	2.1	89	3120	6400
HJS560A-10	710	710	86	0.84	94.2	1.0	5.3	2.3	117	3200	7600
HJS560B-10	800	710	96	0.85	94.4	1.1	5.4	2.3	137	3400	8000
HJS560C-10	900	710	109	0.84	94.6	1.0	5.4	2.3	146	3500	8200
HJS560D-10	1000	710	120	0.85	94.8	1.0	5.3	2.2	165	3600	8400
HJS630A-10	1120	712	135	0.84	94.8	1.0	5.6	2.1	269	4000	9100
HJS630B-10	1250	710	151	0.84	94.9	0.9	5.6	2.1	312	4300	9500
HJS630C-10	1400	712	168	0.84	95.1	1.0	5.8	2.1	353	4600	10100
HJS630D-10	1600	712	193	0.84	95.2	0.9	5.6	2.2	368	6000	10700
HJS710A-10	1600	714	201	0.80	95.5	0.8	5.3	2.4	315	6350	13450
HJS710B-10	1800	714	227	0.81	95.5	0.8	5.5	2.3	350	7230	13980
HJS710C-10	2000	714	249	0.81	95.6	0.8	5.6	2.4	390	8010	14530
HJS710D-10	2240	714	275	0.82	95.6	0.7	5.0	2.2	450	9770	15140
HJS800A-10	2500	714	308	0.82	95.7	0.8	5.2	2.3	530	11140	17990
HJS800B-10	2800	715	347	0.81	95.8	0.8	5.6	2.5	600	13080	18740
HJS900A-10	3150	714	385	0.82	95.9	0.7	4.6	2.0	660	13290	23580
HJS900B-10	3550	714	433	0.82	96.1	0.8	4.9	2.1	750	14210	24370
HJS900C-10	4000	714	488	0.82	96.2	0.8	5.2	2.2	840	15840	25610
HJS1000A-10	4500	714	548	0.83	96.4	0.7	4.7	2.0	840	16800	30800
HJS1000B-10	5000	715	600	0.83	96.5	0.6	5.2	2.3	1510	18120	31740
HJS1000C-10	5600	715	664	0.84	96.6	0.6	5.2	2.3	1700	19550	32680
HJS1000D-10	6300	715	755	0.83	96.7	0.6	5.3	2.2	1750	21630	33810
HJS1120A-10	7100	715	840	0.84	96.8	0.6	5.3	2.3	1880	22600	38100
HJS1120B-10	8000	715	934	0.85	96.9	0.5	4.6	2.4	2200	23080	39040
HJS1120C-10	9000	715	1050	0.85	97.0	0.6	4.7	2.2	2460	24680	40120
HJS1120D-10	10000	715	1167	0.84	97.1	0.6	5.0	2.4	2730	27570	41410





DREHSTROM-HOCHSPANNUNGS-MOTOREN

Kühlart: IC611, Luft-Luft-Kühlung

THREE - PHASE HIGH VOLTAGE MOTORS

Cooling Method: IC611, Air-Air

MOTEURS DE HAUTE TENSION DE TROIS PHASE

Méthode de refroidissement IC611, air-air de refroidissement



6.6kV - 60 Hz - CL F - IP55

Typ	Nennleistung	Nenn-drehzahl	N-strom 6.6kV	Leistungs-faktor	Wirkungs-grad	Anzugs-moment	Anzugs-strom	Kipp-moment	Trägheits-moment kg m2	Gewicht
Type	Rated output	Rated speed	Current 6.6kV	Power factor	Efficiency %	Relative torque	Relative current	B-down Torque	Moment of inertia kg m2	Weight
Type	Puissance nominale	Vitesse nominale	Intensité 6.6kV	Facteur de puissance	Rendement %	Couple démarrage	Courant démarrage	Couple maximal	Moment d'inertie kg m2	Masse
	KW	1 / min	A	cos φ	%	MA / MN	Ia / In	MK / MN	Motor J Load	kg

12 Polig / 12 Poles / 12 Pôles

HJS450A-12	185	587	27	0.73	91.5	0.9	5.0	2.1	42	1400	4600
HJS450B-12	200	588	29	0.73	91.7	0.9	5.1	2.1	44	1500	4700
HJS450C-12	220	588	32	0.73	92.2	0.9	4.7	2.1	46	1600	4800
HJS450D-12	250	589	36	0.72	92.6	0.9	5.3	2.1	48	1700	4900
HJS500A-12	280	590	38	0.77	93.1	1.1	4.9	2.2	55	2900	5500
HJS500B-12	315	590	42	0.77	93.3	1.1	4.8	2.2	60	3060	5620
HJS500C-12	355	592	48	0.77	93.4	1.1	4.9	2.2	65	3225	5800
HJS500D-12	400	592	53	0.78	93.6	1.1	4.9	2.2	77	3345	6000
HJS500E-12	450	592	59	0.78	93.7	1.1	5.1	2.3	85	3580	6200
HJS560A-12	500	593	65	0.79	94.1	1.1	5.5	2.4	140	3600	7130
HJS560B-12	560	593	74	0.78	94.3	1.2	5.7	2.5	164	3700	7630
HJS560C-12	630	593	80	0.80	94.5	1.0	5.2	2.3	185	3800	9630
HJS560D-12	710	592	92	0.78	94.6	1.0	5.3	2.4	196	3900	9770
HJS630A-12	800	594	100	0.81	94.7	0.8	5.2	2.0	315	4900	9100
HJS630B-12	900	594	111	0.82	94.8	0.8	5.3	2	345	5400	9400
HJS630C-12	1000	594	125	0.81	95.0	0.9	5.1	2.1	360	5800	9800
HJS630D-12	1120	594	138	0.82	95.1	0.9	5.2	2.2	378	6600	10400
HJS710A-12	1250	594	162	0.78	95.2	0.9	5.7	2.6	290	9850	13220
HJS710B-12	1400	594	181	0.78	95.2	0.9	5.7	2.5	300	10750	13720
HJS710C-12	1600	594	205	0.79	95.2	0.9	5.5	2.6	300	11080	14170
HJS800A-12	1800	595	227	0.80	95.4	1.0	5.7	2.5	560	12030	17640
HJS800B-12	2000	595	249	0.81	95.5	1.0	5.8	2.6	600	12240	18130
HJS800C-12	2240	595	279	0.81	95.5	1.0	5.8	2.6	660	13350	18740
HJS900A-12	2500	594	307	0.82	95.6	0.9	5.7	2.6	890	14000	23310
HJS900B-12	2800	595	333	0.82	95.7	0.9	5.9	2.6	970	14570	24120
HJS900C-12	3150	595	386	0.83	95.7	1.0	6.0	2.7	1090	15500	25040
HJS1000A-12	3550	595	429	0.83	95.9	0.9	5.7	2.4	1570	24440	29520
HJS1000B-12	4000	595	483	0.82	96.0	0.8	5.5	2.3	1720	26270	30400
HJS1000C-12	4500	595	543	0.83	96.0	0.8	5.4	2.3	1870	28150	31530
HJS1000D-12	5000	595	603	0.83	96.1	0.9	5.5	2.3	1980	30970	32970
HJS1120A-12	5600	595	667	0.84	96.2	0.7	5.2	2.3	2400	32030	37470
HJS1120B-12	6300	595	740	0.85	96.2	0.7	5.2	2.2	2620	33530	38330
HJS1120C-12	7100	595	835	0.85	96.3	0.7	5.3	2.3	2840	36030	39240
HJS1120D-12	8000	596	951	0.84	96.4	0.7	5.4	2.3	3130	38670	40840





DREHSTROM-HOCHSPANNUNGS-MOTOREN

Kühlart: IC611, Luft-Luft-Kühlung

THREE - PHASE HIGH VOLTAGE MOTORS

Cooling Method: IC611, Air-Air

MOTEURS DE HAUTE TENSION DE TROIS PHASE

Méthode de refroidissement IC611, air-air de refroidissement



6.6kV - 60 Hz - CL F - IP55

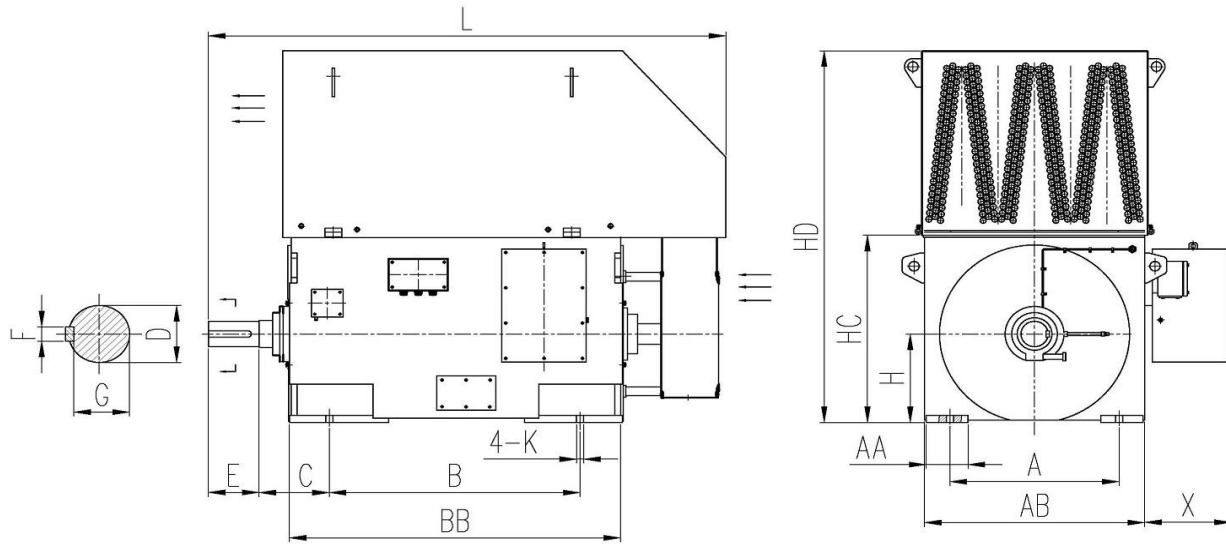
Typ	Nennleistung	Nenn-drehzahl	N-strom 6.6kV	Leistungs-faktor	Wirkungs-grad	Anzugs-moment	Anzugs-strom	Kipp-moment	Trägheits-moment kg m2	Gewicht
Type	Rated output	Rated speed	Current 6.6kV	Power factor	Efficiency %	Relative torque	Relative current	B-down Torque	Moment of inertia kg m2	Weight
Type	Puissance nominale	Vitesse nominale	Intensité 6.6kV	Facteur de puissance	Rendement %	Couple démarrage	Courant démarrage	Couple maximal	Moment d'inertie kg m2	Masse
	KW	1 / min	A	cos φ	%	MA / MN	Ia / In	MK / MN	Motor J Load	kg

16 Polig / 16 Poles / 16 Pôles

HJS710A-16	710	444	99	0.74	93.5	0.9	5.3	2.5	300	11620	12780
HJS710B-16	800	444	110	0.75	93.5	0.9	5.4	2.6	340	12260	13100
HJS710C-16	900	444	125	0.74	93.6	0.9	5.4	2.6	380	13540	13580
HJS710D-16	1000	444	137	0.75	93.6	0.9	5.5	2.6	450	14910	14010
HJS800A-16	1120	444	154	0.74	94.3	0.8	5.3	2.2	510	18260	17820
HJS800B-16	1250	444	172	0.74	94.4	0.8	5.4	2.2	570	20100	18310
HJS800C-16	1400	444	195	0.73	94.5	0.8	5.6	2.4	640	22810	18630
HJS900A-16	1600	445	219	0.74	94.8	0.8	5.6	2.4	890	19300	22720
HJS900B-16	1800	445	247	0.74	94.8	0.8	5.7	2.3	990	20780	23360
HJS900C-16	2000	445	274	0.74	94.9	0.8	5.7	2.3	1050	22350	24030
HJS900D-16	2240	445	303	0.75	94.9	0.8	5.8	2.3	1140	24670	25160
HJS1000A-16	2500	445	333	0.76	95.0	0.9	5.8	2.2	1541	35930	28680
HJS1000B-16	2800	445	368	0.77	95.0	0.9	5.9	2.2	1650	38970	29670
HJS1000C-16	3150	445	414	0.77	95.1	0.9	5.8	2.1	1850	42450	31410
HJS1000D-16	3550	446	473	0.76	95.1	0.9	5.9	2.2	2060	46080	32100
HJS1120A-16	4000	446	515	0.78	95.8	0.8	5.8	2.1	2310	52400	35120
HJS1120B-16	4500	446	579	0.78	95.8	0.8	5.9	2.2	2520	57500	36600
HJS1120C-16	5000	446	635	0.79	95.9	0.9	5.7	2.3	2820	61550	38110
HJS1120D-16	5600	446	711	0.79	96.0	0.9	5.9	2.2	3040	72630	39750

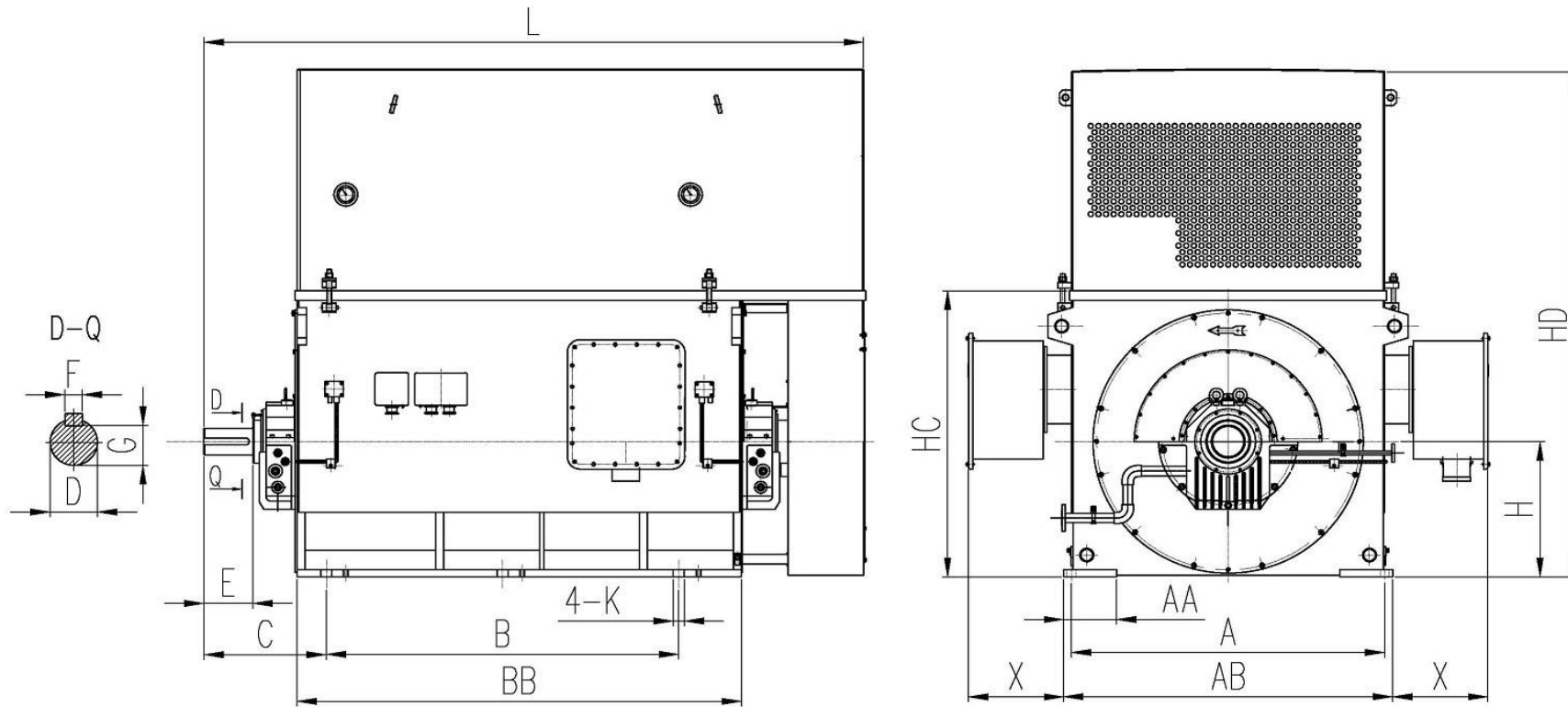


Overall mounting dimensions for HJS (4.16kV / 6.6kV / 13.8kV) series of high-voltage three-phase induction motors.



Frame	A	AA	AB	B	BB	C	D	E	F	G	H	HC	HD	K	L	X
HJS355 2	630	160	800	900	1420	315	80	170	22	71	355	755	1250	28	2200	510
HJS355 4-8	630	160	800	900	1420	315	100	210	28	90	355	755	1250	28	2200	510
HJS400 2	710	170	900	1000	1570	335	90	170	25	81	400	850	1350	35	2400	510
HJS400 4-8	710	170	900	1000	1570	335	110	210	28	100	400	850	1350	35	2400	510
HJS450 2	800	190	1000	1120	1720	355	100	210	28	90	450	950	1550	35	2600	510
HJS450 4	800	190	1000	1120	1720	355	120	210	32	109	450	950	1550	35	2600	510
HJS450 6-12	800	190	1000	1120	1720	355	130	250	32	119	450	950	1550	35	2600	510
HJS500 2	900	200	1120	1250	1820	475	110	210	28	100	500	1060	1700	42	2900	510
HJS500 4	900	200	1120	1250	1820	475	130	250	32	119	500	1060	1700	42	2900	510
HJS500 6-12	900	200	1120	1250	1820	475	140	250	36	128	500	1060	1700	42	2900	510
HJS560 2	1000	230	1250	1400	1970	500	130	250	32	119	560	1185	1850	42	3200	560
HJS560 4	1000	230	1250	1400	1970	500	150	250	36	138	560	1185	1850	42	3200	560
HJS560 6-12	1000	230	1250	1400	1970	500	160	300	40	147	560	1185	1850	42	3200	560
HJS630 2	1120	240	1400	1600	2120	530	140	250	36	128	630	1330	2700	48	3500	560
HJS630 4	1120	240	1400	1600	2120	530	170	300	40	157	630	1330	2700	48	3500	560
HJS630 6-12	1120	240	1400	1600	2120	530	180	300	45	165	630	1330	2700	48	3500	560

Overall mounting dimensions for HJS (4.16kV / 6.6kV / 13.8kV) series of high-voltage three-phase induction motors.



Frame	A	B	C	AB	AA	BB	D	E	F	G	H	K	HC	HD	L	X
HJS710 2-16	1400	1800	530	1600	262	2150/2330	200	350	45	185	710	56	1510	2960	3850	600
HJS800 2-16	1600	2000	560	1800	292	2350/2500	220	350	50	203	800	56	1700	3175	4050	600
HJS900 2-16	1800	2000/2200	560	2000	302	2500/2700	250	410	56	230	900	66	1900	3420	4500	600
HJS1000 2-16	2000	2000/2200	630	2240	332	2500/2900	280	470	63	260	1000	66	2120	3720	4550	600
HJS1120 2-16	2240	2200/2500	630	2500	402	2700/3200	320	470	70	298	1120	74	2370	4190	4800	600