



SCHNECKENGETRIEBEMOTOREN

WORM GEARBOX MOTORS

| Typ | Nenn Drehzahl | Übersetzung | Anzugsmoment | Service factor | Gewicht |
|------|---------------|-----------------|-----------------|----------------|---------|
| Type | Rated speed | Reduction ratio | Relative torque | Betriebsart | Weight |
| | 1/min | i | Nm | SF | kg |

0.25 kW

| | | | | | |
|-----------|-----|------|------|-----|-----|
| HGW40 | 200 | 7 | 10 | >3 | 8,5 |
| HGW40 | 140 | 10 | 14 | >3 | 8,5 |
| HGW40 | 93 | 15 | 20 | 2,2 | 8,5 |
| HGW40 | 70 | 20 | 26 | 1,5 | 8,5 |
| HGW40 | 50 | 28 | 32 | 1,5 | 8,5 |
| HGW40 | 35 | 40 | 42 | 1,0 | 8,5 |
| HGW71/50 | 32 | 44 | 62 | 2,3 | 12 |
| HGW50 | 29 | 49 | 51 | 1,5 | 9,8 |
| HGW50 | 25 | 56 | 57 | 1,3 | 9,8 |
| HGW71/50 | 22 | 63 | 88 | 1,5 | 12 |
| HGW50 | 20 | 70 | 63 | 1,0 | 9,8 |
| HGW60 | 18 | 80 | 70 | 1,5 | 13 |
| HGW71/50 | 95 | 95 | 107 | 1,2 | 12 |
| HGW60 | 14 | 100 | 83 | 1,0 | 13 |
| HGW71/60 | 11 | 126 | 137 | 1,7 | 15 |
| HGW40/70 | 9,3 | 150 | 146 | 1,5 | 17 |
| HGW71/60 | 8,0 | 176 | 170 | 1,4 | 15 |
| HGW40/70 | 7,0 | 200 | 188 | 1,5 | 17 |
| HGW71/70 | 5,5 | 252 | 230 | 1,3 | 16 |
| HGW40/70 | 5,0 | 280 | 224 | 1,5 | 17 |
| HGW71/70 | 4,6 | 309 | 265 | 1,0 | 16 |
| HGW71/70 | 4,0 | 353 | 275 | 0,9 | 16 |
| HGW40/70 | 3,3 | 420 | 318 | 1,2 | 17 |
| HGW40/70 | 2,5 | 560 | 400 | 1,0 | 17 |
| HGW40/85 | 1,8 | 784 | 531 | 1,1 | 21 |
| HGW50/110 | 1,3 | 1120 | 1045 | 1,2 | 49 |
| HGW50/110 | 0,9 | 1568 | 709 | 1,9 | 49 |
| HGW50/110 | 0,6 | 2240 | 1193 | 1,1 | 49 |
| HGW50/110 | 0,5 | 2800 | 1289 | 0,9 | 49 |

* Above specifications may be adjusted upon every individual application through different combinations between pre-reduction gearbox or various reduction stages
 * Obige Daten können je nach Gebrauch durch verschiedenen Kombinationen von prereduction Getrieben oder verschiedenen Übersetzungen angepasst werden.





SCHNECKENGETRIEBEMOTOREN

WORM GEARBOX MOTORS

| Typ | Nennzahl | Übersetzung | Anzugsmoment | Service factor | Gewicht |
|------|-------------|-----------------|-----------------|----------------|---------|
| Type | Rated speed | Reduction ratio | Relative torque | Betriebsart | Weight |
| | 1/min | i | Nm | SF | kg |

0.37 kW

| | | | | | |
|-----------|------|------|------|-----|----|
| HGW40 | 200 | 7 | 15 | 2,9 | 9 |
| HGW40 | 140 | 10 | 21 | 2,1 | 9 |
| HGW40 | 93 | 15 | 30 | 1,4 | 9 |
| HGW40 | 70 | 20 | 38 | 1,0 | 9 |
| HGW40 | 50 | 28 | 48 | 1,0 | 9 |
| HGW40 | 35 | 40 | 65 | 1,1 | 11 |
| HGW71/50 | 32 | 44 | 92 | 1,6 | 13 |
| HGW50 | 29 | 49 | 76 | 1,0 | 11 |
| HGW50 | 25 | 56 | 85 | 1,5 | 13 |
| HGW71/50 | 22 | 63 | 131 | 1,0 | 13 |
| HGW50 | 20 | 70 | 97 | 1,3 | 13 |
| HGW60 | 18 | 80 | 106 | 1,0 | 13 |
| HGW71/60 | 15 | 95 | 165 | 1,4 | 15 |
| HGW70 | 14 | 100 | 130 | 1,0 | 15 |
| HGW71/60 | 11 | 126 | 215 | 1,1 | 15 |
| HGW40/70 | 9,3 | 150 | 217 | 2,1 | 17 |
| HGW71/60 | 8,0 | 176 | 251 | 1,0 | 16 |
| HGW40/70 | 7,0 | 200 | 278 | 1,3 | 17 |
| HGW71/70 | 5,5 | 252 | 346 | 0,9 | 17 |
| HGW40/70 | 5,0 | 280 | 332 | 1,1 | 17 |
| HGW40/85 | 3,3 | 420 | 493 | 1,2 | 21 |
| HGW40/85 | 2,5 | 560 | 622 | 1,0 | 21 |
| HGW50/110 | 1,25 | 1120 | 1045 | 1,2 | 50 |
| HGW50/110 | 0,9 | 1568 | 1295 | 1,1 | 50 |

* Above specifications may be adjusted upon every individual application through different combinations between pre-reduction gearbox or various reduction stages
 * Obige Daten können je nach Gebrauch durch verschiedenen Kombinationen von prereducion Getrieben oder verschiedenen Übersetzungen angepasst werden.





SCHNECKENGETRIEBEMOTOREN

WORM GEARBOX MOTORS

| Typ | Nenn Drehzahl | Übersetzung | Anzugsmoment | Service factor | Gewicht |
|------|---------------|-----------------|-----------------|----------------|---------|
| Type | Rated speed | Reduction ratio | Relative torque | Betriebsart | Weight |
| | 1/min | i | Nm | SF | kg |

0.55 kW

| | | | | | |
|-----------|-----|-----|------|-----|----|
| HGW50 | 200 | 7 | 23 | >3 | 13 |
| HGW50 | 140 | 10 | 32 | 2,4 | 13 |
| HGW50 | 93 | 15 | 44 | 1,7 | 13 |
| HGW50 | 70 | 20 | 57 | 1,1 | 13 |
| HGW50 | 50 | 28 | 75 | 1,1 | 13 |
| HGW60 | 35 | 40 | 99 | 1,4 | 15 |
| HGW80/60 | 32 | 44 | 138 | 1,6 | 18 |
| HGW60 | 29 | 49 | 112 | 1,1 | 15 |
| HGW60 | 25 | 56 | 125 | 1,0 | 15 |
| HGW80/60 | 22 | 63 | 197 | 1,2 | 18 |
| HGW70 | 20 | 70 | 155 | 1,1 | 17 |
| HGW70 | 18 | 80 | 154 | 1,0 | 17 |
| HGW80/60 | 15 | 95 | 245 | 1,0 | 18 |
| HGW85 | 14 | 100 | 210 | 1,0 | 21 |
| HGW80/70 | 11 | 126 | 325 | 1,1 | 20 |
| HGW80/85 | 8,0 | 176 | 394 | 1,3 | 24 |
| HGW80/85 | 5,5 | 252 | 525 | 1,0 | 24 |
| HGW80/110 | 4,6 | 309 | 605 | 1,8 | 51 |
| HGW80/110 | 4,0 | 353 | 682 | 1,4 | 51 |
| HGW50/110 | 3,3 | 420 | 1225 | 1,1 | 51 |
| HGW80/110 | 3,2 | 441 | 787 | 1,2 | 51 |
| HGW80/110 | 2,8 | 504 | 845 | 0,9 | 51 |
| HGW50/110 | 2,5 | 570 | 945 | 1,3 | 51 |
| HGW50/110 | 1,8 | 784 | 765 | 1,5 | 51 |

* Above specifications may be adjusted upon every individual application through different combinations between pre-reduction gearbox or various reduction stages
 * Obige Daten können je nach Gebrauch durch verschiedenen Kombinationen von prereducion Getrieben oder verschiedenen Übersetzungen angepasst werden.





SCHNECKENGETRIEBEMOTOREN

WORM GEARBOX MOTORS

| Typ | Nennndrehzahl | Übersetzung | Anzugsmoment | Service factor | Gewicht |
|------|---------------|-----------------|-----------------|----------------|---------|
| Type | Rated speed | Reduction ratio | Relative torque | Betriebsart | Weight |
| | 1/min | i | Nm | SF | kg |

0.75 kW

| | | | | | |
|-----------|-----|-----|------|-----|----|
| HGW50 | 200 | 7 | 31 | 2,4 | 14 |
| HGW50 | 140 | 10 | 43 | 1,7 | 14 |
| HGW50 | 93 | 15 | 60 | 1,2 | 14 |
| HGW60 | 70 | 20 | 79 | 1,5 | 17 |
| HGW60 | 50 | 28 | 102 | 1,4 | 17 |
| HGW60 | 35 | 40 | 135 | 1,0 | 17 |
| HGW80/60 | 32 | 44 | 189 | 1,2 | 20 |
| HGW70 | 29 | 49 | 165 | 1,1 | 18 |
| HGW70 | 25 | 56 | 180 | 1,0 | 18 |
| HGW80/60 | 22 | 63 | 268 | 0,9 | 20 |
| HGW85 | 20 | 70 | 225 | 1,3 | 22 |
| HGW85 | 18 | 80 | 239 | 1,2 | 22 |
| HGW80/70 | 11 | 126 | 349 | 0,8 | 21 |
| HGW80/85 | 8 | 176 | 537 | 0,9 | 25 |
| HGW80/110 | 5,5 | 252 | 742 | 1,5 | 53 |
| HGW80/110 | 4,6 | 309 | 825 | 1,3 | 53 |
| HGW80/110 | 4 | 353 | 931 | 1,1 | 53 |
| HGW50/110 | 3,3 | 420 | 1041 | 1,1 | 53 |
| HGW80/110 | 3,2 | 441 | 1075 | 0,9 | 53 |
| HGW50/110 | 2,5 | 570 | 1289 | 1,0 | 53 |

* Above specifications may be adjusted upon every individual application through different combinations between pre-reduction gearbox or various reduction stages
 * Obige Daten können je nach Gebrauch durch verschiedenen Kombinationen von prerreduction Getrieben oder verschiedenen Übersetzungen angepasst werden.





SCHNECKENGETRIEBEMOTOREN

WORM GEARBOX MOTORS

| Typ | Nenndrehzahl | Übersetzung | Anzugsmoment | Service factor | Gewicht |
|------|--------------|-----------------|-----------------|----------------|---------|
| Type | Rated speed | Reduction ratio | Relative torque | Betriebsart | Weight |
| | 1/min | i | Nm | SF | kg |

1.1 kW

| | | | | | |
|-----------|-----|-----|------|-----|-----|
| HGW60 | 200 | 7 | 45 | 2,5 | 19 |
| HGW60 | 140 | 10 | 63 | 2,1 | 19 |
| HGW60 | 93 | 15 | 91 | 1,4 | 19 |
| HGW60 | 70 | 20 | 116 | 1,1 | 19 |
| HGW70 | 50 | 28 | 158 | 1,4 | 21 |
| HGW70 | 35 | 40 | 212 | 1,1 | 21 |
| HGW80/70 | 32 | 44 | 280 | 1,0 | 22 |
| HGW85 | 29 | 49 | 246 | 1,3 | 24 |
| HGW85 | 25 | 56 | 285 | 1,1 | 24 |
| HGW80/85 | 22 | 63 | 404 | 1,3 | 27 |
| HGW110 | 20 | 70 | 352 | 1,8 | 52 |
| HGW110 | 18 | 80 | 385 | 1,3 | 52 |
| HGW80/85 | 15 | 95 | 505 | 1,0 | 27 |
| HGW110 | 14 | 100 | 457 | 1,0 | 47 |
| HGW80/110 | 11 | 126 | 678 | 1,6 | 56 |
| HGW80/110 | 8,0 | 176 | 827 | 1,4 | 56 |
| HGW80/110 | 5,5 | 252 | 1088 | 1,0 | 56 |
| HGW80/110 | 4,6 | 309 | 1210 | 0,9 | 56 |
| HGW130 | 3,5 | 400 | 1660 | 1,0 | 74 |
| HGW60/130 | 3,3 | 420 | 1590 | 1,2 | 61 |
| HGW150 | 3,0 | 448 | 1933 | 1,3 | 104 |
| HGW150 | 2,5 | 560 | 2110 | 1,0 | 104 |
| HGW150 | 2,2 | 640 | 1970 | 1,0 | 104 |
| HGW70/150 | 1,8 | 784 | 2570 | 1,0 | 100 |

* Above specifications may be adjusted upon every individual application through different combinations between pre-reduction gearbox or various reduction stages
 * Obige Daten können je nach Gebrauch durch verschiedenen Kombinationen von prereduction Getrieben oder verschiedenen Übersetzungen angepasst werden.





SCHNECKENGETRIEBEMOTOREN

WORM GEARBOX MOTORS

| Typ | Nenn Drehzahl | Übersetzung | Anzugsmoment | Service factor | Gewicht |
|------|---------------|-----------------|-----------------|----------------|---------|
| Type | Rated speed | Reduction ratio | Relative torque | Betriebsart | Weight |
| | 1/min | i | Nm | SF | kg |

1.5 kW

| | | | | | |
|-----------|-----|-----|------|-----|-----|
| HGW60 | 200 | 7 | 61 | 1,8 | 21 |
| HGW60 | 140 | 10 | 86 | 1,5 | 21 |
| HGW60 | 93 | 15 | 125 | 1,0 | 21 |
| HGW70 | 70 | 20 | 165 | 1,2 | 22 |
| HGW70 | 50 | 28 | 245 | 1,0 | 22 |
| HGW85 | 35 | 40 | 295 | 1,1 | 26 |
| HGW80/85 | 32 | 44 | 382 | 1,3 | 29 |
| HGW85 | 29 | 49 | 330 | 1,0 | 26 |
| HGW110 | 29 | 49 | 350 | 1,8 | 55 |
| HGW110 | 25 | 56 | 401 | 1,5 | 55 |
| HGW80/85 | 22 | 63 | 550 | 1,0 | 29 |
| HGW110 | 20 | 70 | 480 | 1,3 | 55 |
| HGW110 | 18 | 80 | 525 | 1,0 | 55 |
| HGW80/110 | 15 | 95 | 706 | 1,6 | 59 |
| HGW130 | 14 | 100 | 625 | 1,2 | 78 |
| HGW80/110 | 11 | 126 | 925 | 1,2 | 59 |
| HGW80/110 | 8,0 | 176 | 1128 | 1,0 | 59 |
| HGW130 | 7,0 | 200 | 1250 | 1,0 | 78 |
| HGW130 | 6,3 | 224 | 1460 | 1,2 | 78 |
| HGW150 | 5,0 | 280 | 1491 | 1,1 | 108 |
| HGW150 | 3,5 | 400 | 2230 | 1,1 | 108 |
| HGW150 | 3,0 | 448 | 2490 | 0,9 | 108 |

* Above specifications may be adjusted upon every individual application through different combinations between pre-reduction gearbox or various reduction stages
 * Obige Daten können je nach Gebrauch durch verschiedenen Kombinationen von prerreduction Getrieben oder verschiedenen Übersetzungen angepasst werden.





SCHNECKENGETRIEBEMOTOREN

WORM GEARBOX MOTORS

| Typ | Nennzahl | Übersetzung | Anzugsmoment | Service factor | Gewicht |
|------|-------------|-----------------|-----------------|----------------|---------|
| Type | Rated speed | Reduction ratio | Relative torque | Betriebsart | Weight |
| | 1/min | i | Nm | SF | kg |

2.2 kW

| | | | | | |
|--------|-----|-----|------|-----|-----|
| HGW70 | 200 | 7,0 | 92 | 1,8 | 28 |
| HGW70 | 140 | 10 | 129 | 1,4 | 28 |
| HGW70 | 93 | 15 | 186 | 1,0 | 28 |
| HGW85 | 70 | 20 | 246 | 1,3 | 32 |
| HGW85 | 50 | 28 | 319 | 1,0 | 32 |
| HGW110 | 35 | 40 | 438 | 1,6 | 57 |
| HGW110 | 29 | 49 | 514 | 1,2 | 57 |
| HGW110 | 25 | 56 | 588 | 1,0 | 57 |
| HGW110 | 20 | 70 | 700 | 0,9 | 57 |
| HGW130 | 18 | 80 | 736 | 1,1 | 69 |
| HGW150 | 14 | 100 | 946 | 1,2 | 99 |
| HGW130 | 14 | 98 | 1023 | 1,4 | 83 |
| HGW130 | 12 | 125 | 1279 | 1,4 | 83 |
| HGW130 | 10 | 140 | 1324 | 1,0 | 83 |
| HGW130 | 8,9 | 160 | 1765 | 1,0 | 83 |
| HGW150 | 7,0 | 200 | 1810 | 1,1 | 113 |
| HGW150 | 6,3 | 230 | 2101 | 1,3 | 113 |

* Above specifications may be adjusted upon every individual application through different combinations between pre-reduction gearbox or various reduction stages
 * Obige Daten können je nach Gebrauch durch verschiedenen Kombinationen von prereducion Getrieben oder verschiedenen Übersetzungen angepasst werden.





SCHNECKENGETRIEBEMOTOREN

WORM GEARBOX MOTORS

| Typ | Nennzahl | Übersetzung | Anzugsmoment | Service factor | Gewicht |
|------|-------------|-----------------|-----------------|----------------|---------|
| Type | Rated speed | Reduction ratio | Relative torque | Betriebsart | Weight |
| | 1/min | i | Nm | SF | kg |

3.0 kW

| | | | | | |
|-----------|-----|-----|------|-----|-----|
| HGW70 | 200 | 7,0 | 126 | 1,3 | 34 |
| HGW70 | 140 | 10 | 176 | 1,0 | 34 |
| HGW85 | 93 | 15 | 255 | 1,1 | 38 |
| HGW85 | 770 | 20 | 335 | 1,0 | 38 |
| HGW110 | 50 | 28 | 435 | 1,5 | 60 |
| HGW110 | 35 | 40 | 523 | 1,3 | 60 |
| HGW110 | 29 | 49 | 631 | 0,9 | 60 |
| HGW130 | 29 | 49 | 712 | 1,3 | 73 |
| HGW130 | 25 | 56 | 814 | 1,2 | 73 |
| HGW80/110 | 25 | 56 | 956 | 1,1 | 63 |
| HGW150 | 20 | 70 | 975 | 1,3 | 103 |
| HGW130 | 20 | 70 | 1075 | 1,3 | 87 |
| HGW150 | 18 | 80 | 1035 | 1,1 | 103 |
| HGW130 | 18 | 80 | 1240 | 1,0 | 7 |
| HGW150 | 14 | 100 | 1120 | 0,9 | 103 |
| HGW130 | 14 | 98 | 1280 | 1,1 | 87 |
| HGW130 | 120 | 120 | 1744 | 1,1 | 87 |
| HGW150 | 10 | 140 | 1860 | 1,1 | 117 |
| HGW150 | 8,9 | 160 | 2428 | 1,1 | 117 |

* Above specifications may be adjusted upon every individual application through different combinations between pre-reduction gearbox or various reduction stages

* Obige Daten können je nach Gebrauch durch verschiedenen Kombinationen von prereducion Getrieben oder verschiedenen Übersetzungen angepasst werden.





SCHNECKENGETRIEBEMOTOREN

WORM GEARBOX MOTORS

| Typ | Nenndrehzahl | Übersetzung | Anzugsmoment | Service factor | Gewicht |
|------|--------------|-----------------|-----------------|----------------|---------|
| Type | Rated speed | Reduction ratio | Relative torque | Betriebsart | Weight |
| | 1/min | i | Nm | SF | kg |

4.0 kW

| | | | | | |
|--------|-----|-----|------|-----|-----|
| HGW85 | 200 | 7,0 | 168 | 1,5 | 42 |
| HGW85 | 140 | 10 | 235 | 1,1 | 42 |
| HGW110 | 93 | 15 | 345 | 1,6 | 70 |
| HGW110 | 70 | 20 | 452 | 1,4 | 70 |
| HGW110 | 50 | 28 | 580 | 1,1 | 70 |
| HGW130 | 35 | 40 | 830 | 1,4 | 81 |
| HGW130 | 29 | 49 | 949 | 1,0 | 81 |
| HGW130 | 25 | 56 | 1005 | 0,9 | 81 |
| HGW150 | 25 | 56 | 1116 | 1,3 | 101 |
| HGW150 | 20 | 70 | 1230 | 1,0 | 101 |
| HGW130 | 20 | 70 | 1350 | 0,9 | 95 |
| HGW150 | 18 | 80 | 1260 | 1,1 | 125 |
| HGW150 | 14 | 98 | 1880 | 1,1 | 125 |
| HGW150 | 12 | 120 | 2150 | 0,9 | 125 |

5.5 kW

| | | | | | |
|--------|-----|-----|------|-----|-----|
| HML110 | 200 | 7,0 | 234 | 2,2 | 80 |
| HML110 | 140 | 10 | 428 | 1,6 | 80 |
| HML110 | 93 | 15 | 478 | 1,2 | 80 |
| HML110 | 70 | 20 | 620 | 1,0 | 80 |
| HML130 | 50 | 28 | 809 | 1,4 | 83 |
| HML130 | 35 | 40 | 1140 | 1,0 | 83 |
| HML150 | 29 | 49 | 1323 | 1,1 | 113 |
| HMA130 | 27 | 53 | 1495 | 1,0 | 97 |
| HML150 | 25 | 56 | 1420 | 0,9 | 113 |

* Above specifications may be adjusted upon every individual application through different combinations between pre-reduction gearbox or various reduction stages

* Obige Daten können je nach Gebrauch durch verschiedenen Kombinationen von prereduction Getrieben oder verschiedenen Übersetzungen angepasst werden.





SCHNECKENGETRIEBEMOTOREN

WORM GEARBOX MOTORS

| Typ | Nenn Drehzahl | Übersetzung | Anzugsmoment | Service factor | Gewicht |
|------|---------------|-----------------|-----------------|----------------|---------|
| Type | Rated speed | Reduction ratio | Relative torque | Betriebsart | Weight |
| | 1/min | i | Nm | SF | kg |

7.5 kW

| | | | | | |
|--------|-----|-----|------|-----|-----|
| HML110 | 200 | 7,0 | 315 | 1,7 | 87 |
| HML110 | 140 | 10 | 445 | 1,2 | 87 |
| HML110 | 93 | 15 | 560 | 0,9 | 87 |
| HML130 | 93 | 15 | 655 | 1,5 | 101 |
| HML130 | 70 | 20 | 860 | 1,1 | 101 |
| HML130 | 50 | 28 | 1100 | 1,0 | 101 |
| HML150 | 35 | 40 | 1577 | 1,1 | 131 |

11 kW

| | | | | | |
|--------|-----|-----|------|-----|-----|
| HML150 | 200 | 7,0 | 468 | 2,3 | 143 |
| HML150 | 140 | 10 | 661 | 1,9 | 143 |
| HML150 | 93 | 15 | 972 | 1,5 | 143 |
| HML150 | 70 | 20 | 1261 | 1,1 | 143 |
| HML150 | 50 | 28 | 1435 | 0,9 | 143 |

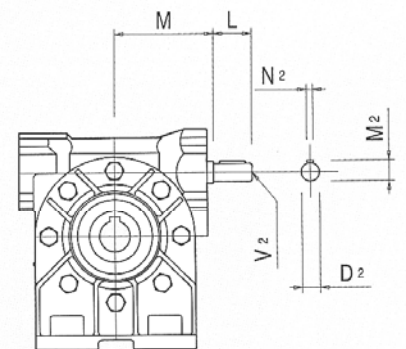
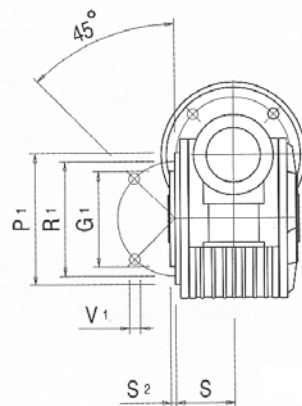
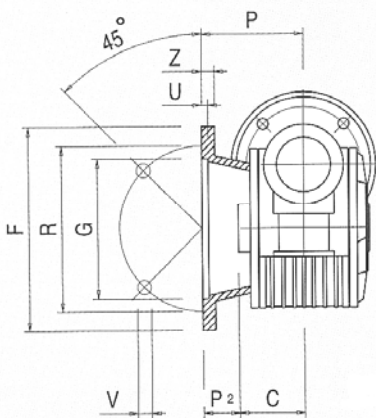
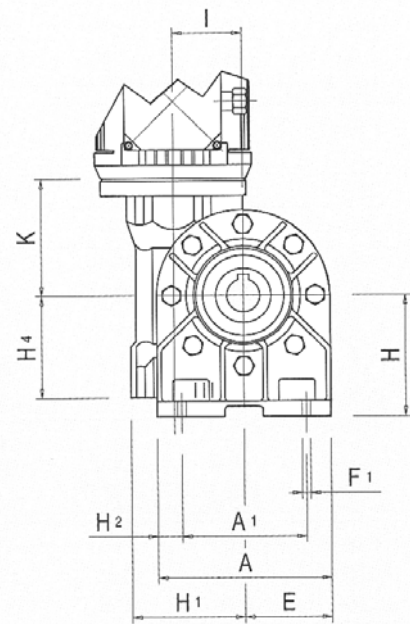
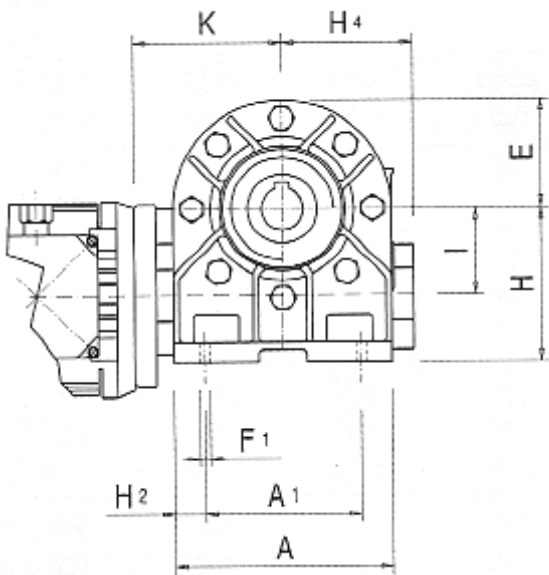
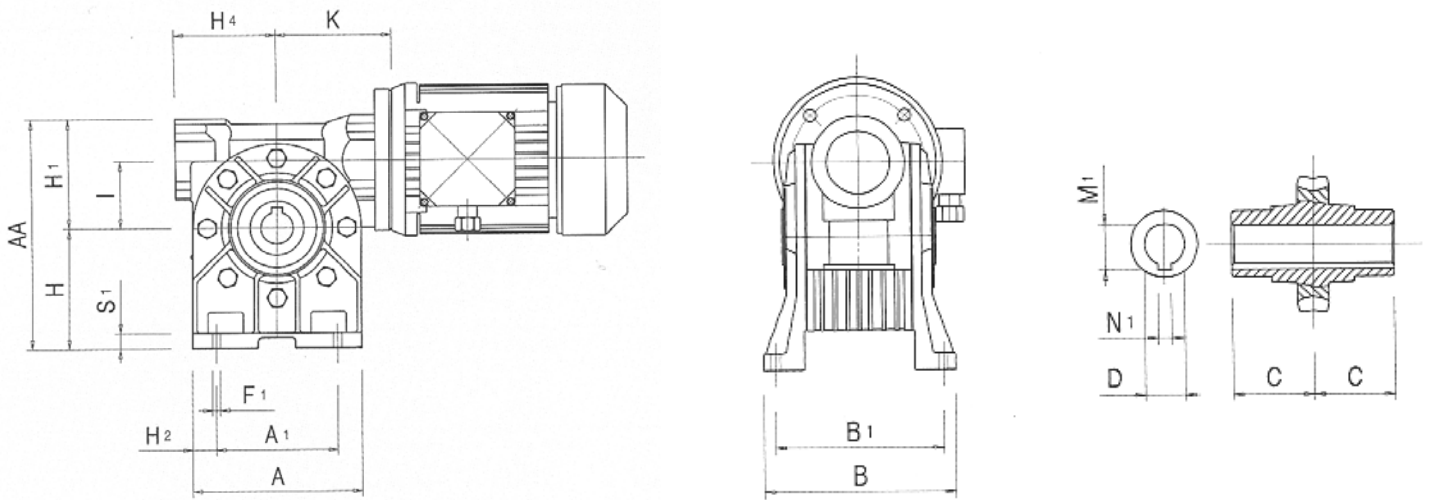
15 kW

| | | | | | |
|--------|-----|-----|------|-----|-----|
| HML150 | 200 | 7,0 | 638 | 1,7 | 173 |
| HML150 | 140 | 10 | 901 | 1,4 | 173 |
| HML150 | 93 | 15 | 1325 | 1,1 | 173 |

* Above specifications may be adjusted upon every individual application through different combinations between pre-reduction gearbox or various reduction stages
 * Obige Daten können je nach Gebrauch durch verschiedenen Kombinationen von prereducion Getrieben oder verschiedenen Übersetzungen angepasst werden.



DIE ANBAU- UND AUSSENMASSEN DER SCHNECKENGETRIEBEMOTOREN
 THE MOUNTING AND OVERALL DIMENSION OF WORM GEARBOX MOTORS

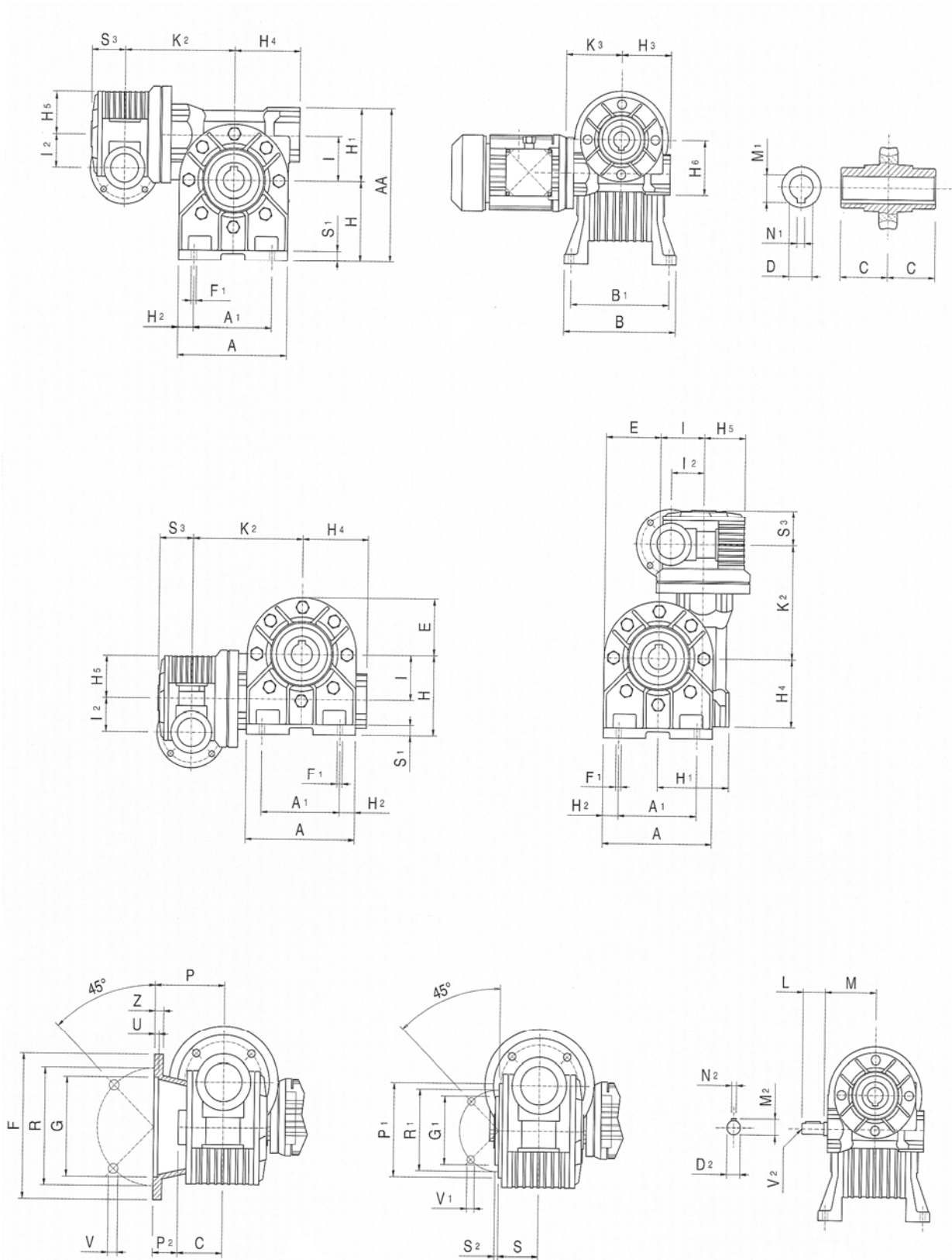


**DIE ANBAU- UND AUSSENMASSEN DER SCHNECKENGETRIEBEMOTOREN
THE MOUNTING AND OVERALL DIMENSION OF WORM GEARBOX MOTORS**

| | 28 | 40 | 50 | 60 | 70 | 85 | 110 | 130 | 150 |
|------------------------|-----------|-----------|-----------|-----------|-----------|-----------|------------|------------|------------|
| A | 67 | 100 | 120 | 138 | 158 | 193 | 250 | 286 | 336 |
| A₁ | 52 | 70 | 85 | 95 | 120 | 140 | 200 | 235 | 260 |
| AA | 101 | 138 | 167 | 197 | 222 | 264 | 342 | 400 | 454 |
| B | 78 | 102 | 119 | 136 | 140 | 168 | 200 | 230 | 250 |
| B₁ | 66 | 84 | 99 | 111 | 116 | 140 | 162 | 190 | 210 |
| C | 30 | 41 | 49 | 60 | 60 | 61 | 77.5 | 90 | 105 |
| D_{H7} | 14 | 19 | 24 | 25 | 28 | 32 | 42 | 48 | 55 |
| D*_{H7} | -- | 18 | 25 | -- | 30 | 35 | -- | -- | -- |
| D_{2h8} | 9 | 11 | 14 | 19 | 19 | 24 | 28 | 38 | 42 |
| E | 33.5 | 50 | 60 | 69 | 79 | 96.5 | 125 | 143 | 168 |
| F | 70 | 140 | 160 | 180 | 200 | 200 | 250 | 300 | 350 |
| F₁ | 5.5 | 7 | 9 | 11 | 11 | 13 | 14 | 15 | 19 |
| G_{H8} | 40 | 95 | 110 | 115 | 130 | 130 | 180 | 230 | 250 |
| G_{1h8} | 42 | 60 | 70 | 70 | 80 | 110 | 130 | 180 | 180 |
| H | 52 | 71 | 85 | 100 | 115 | 135 | 172 | 200 | 230 |
| H₁ | 49 | 67 | 82 | 97 | 107 | 129 | 170 | 200 | 224 |
| H₂ | 7.5 | 15 | 17.5 | 21.5 | 19 | 26.5 | 25 | 25.5 | 38 |
| H₄ | 40 | 60 | 70 | 78 | 90 | 111 | 142 | 159 | 189 |
| K | 47 | 67 | 78-82* | 88 | 101 | 116 | 145 | 164 | 190 |
| K* | 50 | 70 | -- | -- | -- | -- | -- | -- | 210 |
| I | 28 | 40 | 50 | 60 | 70 | 85 | 110 | 130 | 150 |
| L | 20 | 22 | 30 | 40 | 40 | 50 | 60 | 80 | 100 |
| M | 43 | 64 | 74 | 80 | 97 | 115 | 146 | 166 | 195 |
| M₁ | 16.3 | 21.8 | 27.3 | 28.3 | 31.3 | 35.3 | 45.3 | 51.8 | 59.3 |
| M₂ | 10.2 | 12.5 | 16 | 21.5 | 21.5 | 27 | 31 | 41 | 45 |
| N₁ | 5 | 6 | 8 | 8 | 8 | 10 | 12 | 14 | 16 |
| N₂ | 3 | 4 | 5 | 6 | 6 | 8 | 8 | 10 | 12 |
| P | 49 | 82 | 91.5 | 116 | 111 | 100 | 150 | 150 | 160 |
| P₁ | 67 | 95 | 100 | 102 | 116 | 150 | 200 | 240 | 250 |
| P₂ | 19 | 41 | 42.5 | 56 | 51 | 39 | 72.5 | 60 | 55 |
| R | 56 | 115 | 130 | 150 | 165 | 165 | 215 | 265 | 300 |
| R₁ | 56 | 83 | 85 | 85 | 100 | 130 | 165 | 215 | 215 |
| S | 32 | 38 | 49 | 57.5 | 57 | 56.5 | 74.5 | 87 | 102 |
| S₁ | 6 | 9 | 12 | 12 | 14 | 15 | 17 | 19 | 20 |
| S₂ | -3 | 2 | 2.5 | 2.5 | 3 | 3 | 2.5 | 5 | 5 |
| U | 4 | 4 | 4 | 5 | 5 | 5 | 5 | 5 | 6 |
| V | 6 | 8.5 | 10.5 | 10.5 | 13 | 13 | 15 | 15 | 19 |
| V₁ | M6x7.5 | M6x9.5 | M8x12 | M8x15 | M8x17 | M10x17 | M12x18 | M12x24 | M14x30 |
| V₂ | M4 | M4 | M6 | M8 | M8 | M8 | M8 | M10 | M12 |
| Z | 5 | 10 | 10 | 11 | 11 | 13 | 16 | 18 | 20 |



ANBAU- UND AUSSENMASSE DER SCHNECKENGETRIEBEMOTOREN MOUNTING AND DIMENSION OF WORM GEARBOX MOTORS

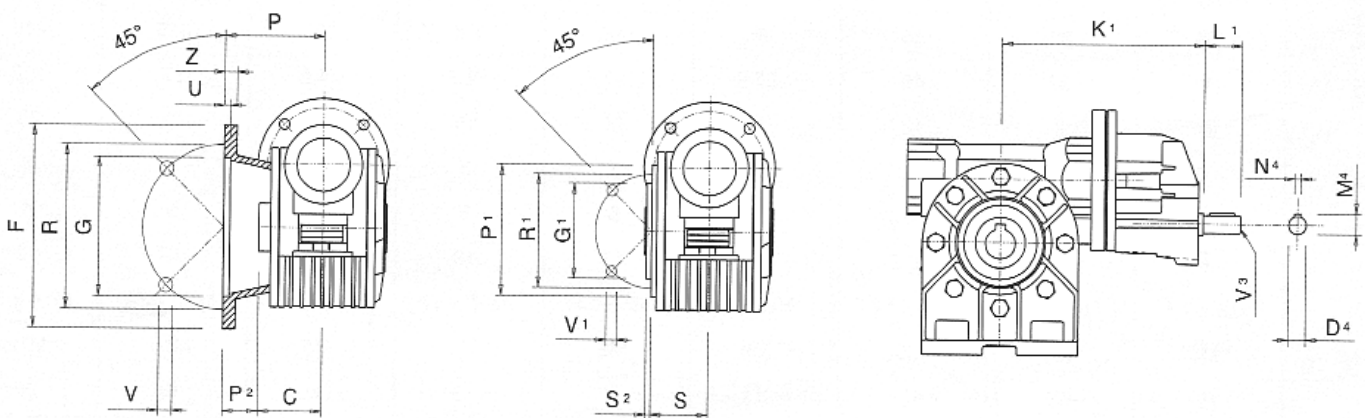
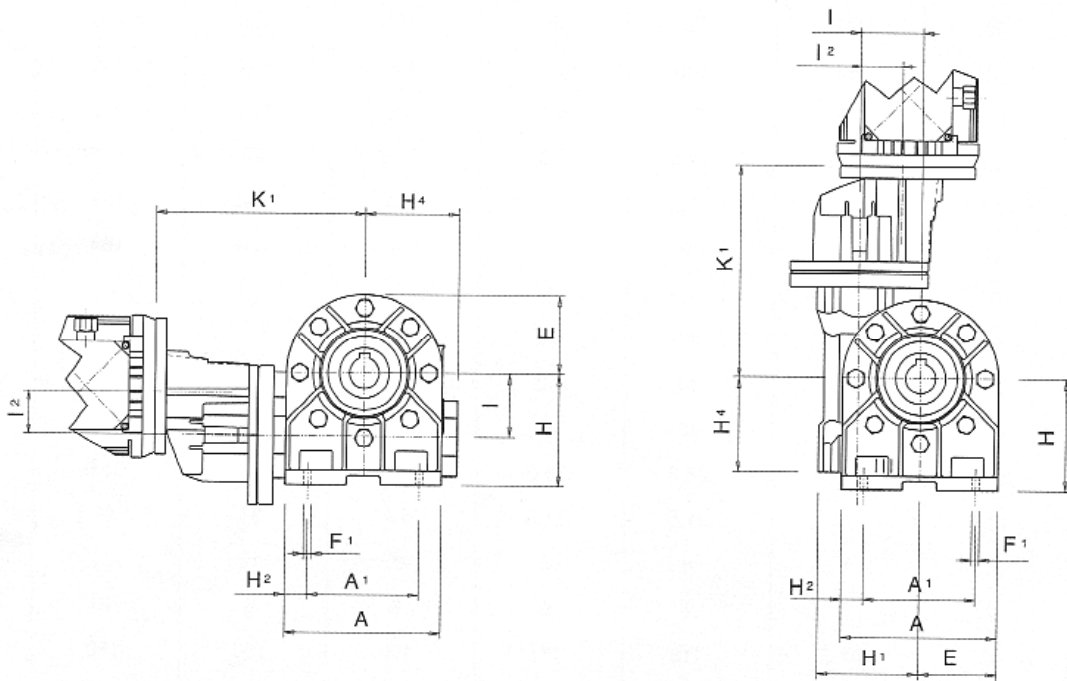
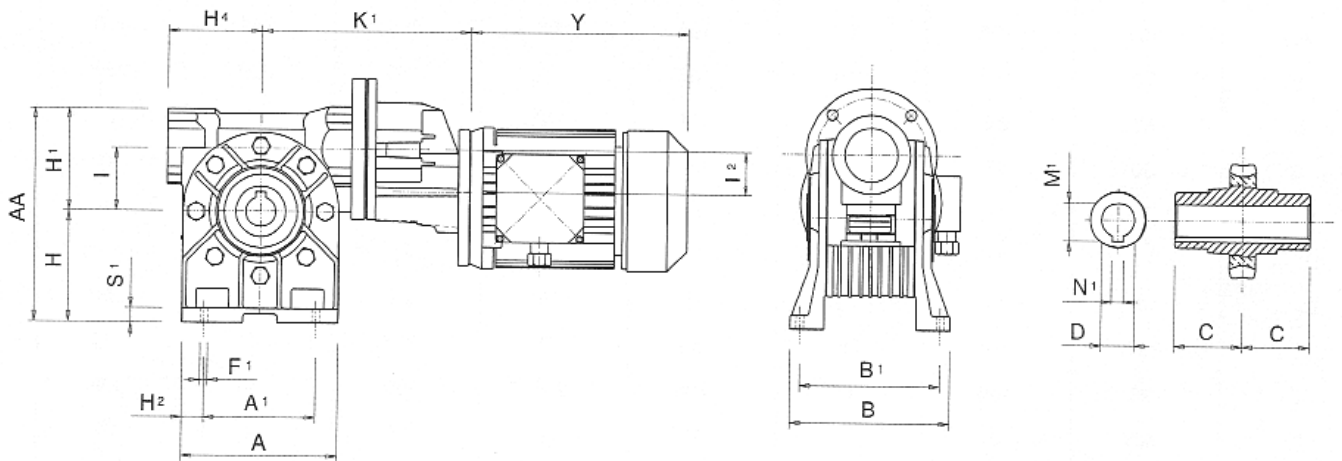


**ANBAU- UND AUSSENMASSE DER SCHNECKENGETRIEBEMOTOREN
MOUNTING AND DIMENSION OF WORM GEARBOX MOTORS**

| | 28/28 | 28/40 | 28/50 | 28/60 | 40/70 | 40/85 | 50/110 | 60/130 | 70/150 |
|------------------------|--------------|--------------|--------------|--------------|--------------|--------------|---------------|---------------|---------------|
| A | 67 | 100 | 120 | 138 | 158 | 193 | 250 | 286 | 336 |
| A₁ | 52 | 70 | 85 | 95 | 120 | 140 | 200 | 235 | 260 |
| AA | 101 | 138 | 167 | 197 | 222 | 264 | 342 | 400 | 454 |
| B | 78 | 102 | 119 | 136 | 140 | 168 | 200 | 230 | 250 |
| B₁ | 66 | 84 | 99 | 111 | 116 | 140 | 162 | 190 | 210 |
| C | 30 | 41 | 49 | 60 | 60 | 61 | 77.5 | 90 | 105 |
| D_{H7} | 14 | 19 | 24 | 25 | 28 | 32 | 42 | 48 | 55 |
| D*_{H7} | -- | 18 | 25 | -- | 30 | 35 | -- | -- | -- |
| D_{2h8} | 9 | 9 | 9 | 9 | 11 | 11 | 14 | 19 | 19 |
| E | 33.5 | 50 | 60 | 69 | 79 | 96.5 | 125 | 143 | 168 |
| F | 70 | 140 | 160 | 180 | 200 | 200 | 250 | 300 | 350 |
| F₁ | 5.5 | 7 | 9 | 11 | 11 | 13 | 14 | 15 | 19 |
| G_{H8} | 40 | 95 | 110 | 115 | 130 | 130 | 180 | 230 | 250 |
| G_{1h8} | 42 | 60 | 70 | 70 | 80 | 110 | 130 | 180 | 180 |
| H | 52 | 71 | 85 | 100 | 115 | 135 | 172 | 200 | 230 |
| H₁ | 49 | 67 | 82 | 97 | 107 | 129 | 170 | 200 | 224 |
| H₂ | 7.5 | 15 | 17.5 | 21.5 | 19 | 26.5 | 25 | 25.5 | 38 |
| H₃ | 40 | 40 | 40 | 40 | 60 | 60 | 70 | 78 | 90 |
| H₄ | 40 | 60 | 70 | 78 | 90 | 111 | 142 | 159 | 189 |
| H₅ | 33.5 | 33.5 | 33.5 | 33.5 | 50 | 50 | 60 | 69 | 79 |
| H₆ | 49 | 49 | 49 | 49 | 67 | 67 | 82 | 97 | 107 |
| K₂ | 79.5 | 99.5 | 129 | 145.5 | 143.5 | 164.5 | 203 | 223 | 254 |
| K₃ | 47 | 47 | 47 | 47 | 67 | 67 | 78 | 88 | 101 |
| K₃* | 50 | 50 | 50 | 50 | 70 | 70 | -- | -- | -- |
| I | 28 | 40 | 50 | 60 | 70 | 85 | 110 | 130 | 150 |
| I₂ | 28 | 28 | 28 | 28 | 40 | 40 | 50 | 60 | 70 |
| L | 20 | 20 | 20 | 20 | 22 | 22 | 30 | 40 | 40 |
| M | 43 | 43 | 43 | 43 | 64 | 64 | 74 | 80 | 97 |
| M₁ | 16.3 | 21.8 | 27.3 | 28.3 | 31.3 | 35.3 | 45.3 | 51.8 | 59.3 |
| M₂ | 10.2 | 10.2 | 10.2 | 10.2 | 12.5 | 12.5 | 16 | 21.5 | 21.5 |
| N₁ | 5 | 6 | 8 | 8 | 8 | 10 | 12 | 14 | 16 |
| N₂ | 3 | 3 | 3 | 3 | 4 | 4 | 5 | 6 | 6 |
| P | 49 | 82 | 91.5 | 116 | 111 | 100 | 150 | 150 | 160 |
| P₁ | 67 | 95 | 100 | 102 | 116 | 150 | 200 | 240 | 250 |
| P₂ | 19 | 41 | 42.5 | 56 | 51 | 39 | 72.5 | 60 | 55 |
| R | 56 | 115 | 130 | 150 | 165 | 165 | 215 | 265 | 300 |
| R₁ | 56 | 83 | 85 | 85 | 100 | 130 | 165 | 215 | 215 |
| S | 32 | 38 | 49 | 57.5 | 57 | 56.5 | 74.5 | 87 | 102 |
| S₁ | 6 | 9 | 12 | 12 | 14 | 15 | 17 | 19 | 20 |
| S₂ | -4 | 2 | 2.5 | 2.5 | 3 | 3 | 2.5 | 5 | 5 |
| S₃ | 30 | 30 | 30 | 30 | 41 | 41 | 49 | 60 | 60 |
| U | 4 | 4 | 4 | 5 | 5 | 5 | 5 | 5 | 6 |
| V | 6 | 8.5 | 10.5 | 10.5 | 13 | 13 | 15 | 15 | 19 |
| V₁ | M6x7.5 | M6x9.5 | M8x12 | M8x15 | M8x17 | M10x17 | M12x18 | M12x24 | M14x30 |
| V₂ | M4 | M4 | M4 | M4 | M4 | M4 | M6 | M8 | M8 |
| Z | 5 | 10 | 10 | 11 | 11 | 13 | 16 | 18 | 20 |



ANBAU- UND AUSSENMASSE DER SCHNECKENGETRIEBEMOTOREN MOUNTING AND DIMENSION OF WORM GEARBOX MOTORS



**ANBAU- UND AUSSENMASSE DER SCHNECKENGETRIEBEMOTOREN
MOUNTING AND DIMENSION OF WORM GEARBOX MOTORS**

| | 63/40 | 63/50 | 63/60 | 71/50 | 71/60 | 71/70 | 71/85 | 80/60 | 80/70 | 80/85 | 80/110 | 130 | 150 |
|------------------------|--------------|--------------|--------------|--------------|--------------|--------------|--------------|--------------|--------------|--------------|---------------|------------|------------|
| A | 100 | 120 | 138 | 120 | 138 | 158 | 193 | 138 | 158 | 193 | 250 | 286 | 336 |
| A₁ | 70 | 85 | 95 | 85 | 95 | 120 | 140 | 95 | 120 | 140 | 200 | 235 | 260 |
| AA | 138 | 167 | 197 | 167 | 197 | 222 | 264 | 197 | 222 | 264 | 342 | 400 | 454 |
| B | 102 | 119 | 136 | 119 | 136 | 140 | 168 | 136 | 140 | 168 | 200 | 230 | 250 |
| B₁ | 84 | 99 | 111 | 99 | 111 | 116 | 140 | 111 | 116 | 140 | 162 | 190 | 210 |
| C | 41 | 49 | 60 | 49 | 60 | 60 | 61 | 60 | 60 | 61 | 77.5 | 90 | 105 |
| D_{H7} | 19 | 24 | 25 | 24 | 25 | 28 | 32 | 25 | 28 | 32 | 42 | 48 | 55 |
| D*_{H7} | 18 | 25 | -- | 25 | -- | 30 | 35 | -- | 30 | 35 | -- | -- | -- |
| D_{4h6} | 11 | 11 | 11 | 14 | 14 | 14 | 14 | 19 | 19 | 19 | 19 | 19 | 19 |
| E | 50 | 60 | 69 | 60 | 69 | 79 | 96.5 | 69 | 79 | 96.5 | 125 | 143 | 168 |
| F | 140 | 160 | 180 | 160 | 180 | 200 | 200 | 180 | 200 | 200 | 250 | 300 | 350 |
| F₁ | 7 | 9 | 11 | 9 | 11 | 11 | 13 | 11 | 11 | 13 | 14 | 15 | 19 |
| G_{H8} | 95 | 110 | 115 | 110 | 115 | 130 | 130 | 115 | 130 | 130 | 180 | 230 | 250 |
| G_{1h8} | 60 | 70 | 70 | 70 | 70 | 80 | 110 | 70 | 80 | 110 | 130 | 180 | 180 |
| H | 71 | 85 | 100 | 85 | 100 | 115 | 135 | 100 | 115 | 135 | 172 | 200 | 230 |
| H₁ | 67 | 82 | 97 | 82 | 97 | 107 | 129 | 97 | 107 | 129 | 170 | 200 | 224 |
| H₂ | 15 | 18 | 22 | 18 | 22 | 19 | 26.5 | 22 | 19 | 26.5 | 25 | 25.5 | 38 |
| H₄ | 60 | 70 | 78 | 70 | 78 | 90 | 111 | 78 | 90 | 111 | 142 | 159 | 189 |
| K₁ | 153 | 161-165* | 171 | 168-172* | 178 | 191 | 206 | 202 | 215 | 230 | 259 | 290 # | 316 # |
| I | 40 | 50 | 60 | 50 | 60 | 70 | 85 | 60 | 70 | 85 | 110 | 130 | 150 |
| I₂ | 32 | 32 | 32 | 40 | 40 | 40 | 40 | 50 | 50 | 50 | 50 | 75 | 75 |
| L₁ | 23 | 23 | 23 | 30 | 30 | 30 | 30 | 40 | 40 | 40 | 40 | 40 | 40 |
| M₁ | 21.8 | 27.3 | 28.3 | 27.3 | 28.3 | 31.3 | 35.3 | 28.3 | 31.3 | 35.3 | 45.3 | 51.8 | 59.3 |
| M₄ | 12.5 | 12.5 | 12.5 | 16 | 16 | 16 | 16 | 22.5 | 22.5 | 22.5 | 22.5 | 22.5 | 22.5 |
| N₁ | 6 | 8 | 8 | 8 | 8 | 8 | 10 | 8 | 8 | 10 | 12 | 14 | 16 |
| N₄ | 4 | 4 | 4 | 5 | 5 | 5 | 5 | 6 | 6 | 6 | 6 | 6 | 6 |
| P | 82 | 91.5 | 116 | 91.5 | 116 | 111 | 100 | 116 | 111 | 100 | 150 | 150 | 160 |
| P₁ | 95 | 100 | 102 | 100 | 102 | 116 | 150 | 102 | 116 | 150 | 200 | 240 | 250 |
| P₂ | 41 | 42.5 | 56 | 42.5 | 56 | 51 | 39 | 56 | 51 | 39 | 72.5 | 60 | 55 |
| R | 115 | 130 | 150 | 130 | 150 | 165 | 165 | 150 | 165 | 165 | 215 | 265 | 300 |
| R₁ | 83 | 85 | 85 | 85 | 85 | 100 | 130 | 85 | 100 | 130 | 165 | 215 | 215 |
| S | 38 | 49 | 57.5 | 49 | 57.5 | 57 | 56.5 | 57.5 | 57 | 56.5 | 74.5 | 87 | 102 |
| S₁ | 9 | 12 | 12 | 12 | 12 | 14 | 15 | 12 | 14 | 15 | 17 | 19 | 20 |
| S₂ | 2 | 2.5 | 2.5 | 2.5 | 2.5 | 3 | 3 | 2.5 | 3 | 3 | 2.5 | 5 | 5 |
| U | 4 | 4 | 5 | 4 | 5 | 5 | 5 | 5 | 5 | 5 | 5 | 5 | 6 |
| V | 8.5 | 10.5 | 10.5 | 10.5 | 10.5 | 13 | 13 | 10.5 | 13 | 13 | 15 | 15 | 19 |
| V₁ | M6x 9.5 | M6x 12 | M8x 15 | M8x 12 | M8x 15 | M8x 17 | M10x 17 | M8x 15 | M8x 17 | M10x 17 | M12x 18 | M12x 24 | M14x 30 |
| V₃ | M4 | M4 | M4 | M6 | M6 | M6 | M6 | M8 | M8 | M8 | M8 | M8 | M8 |
| Z | 10 | 10 | 11 | 10 | 11 | 11 | 13 | 11 | 11 | 13 | 16 | 18 | 20 |

