



General Description:

HTG series roller table motors are special driving elements for the development of steel industry; it can be used with many kinds of SPWM frequency conversion installment. This kind of motor is suitable for continuous operation in high temperature, moist and dusty environment; it has advantage of small volume, lightweight, low vibration, high reliability, high overload capacity, wide speed adjusting range, easy maintenance, firm structure and design.

HTG motor can be continuous or intermittent operation in the condition of frequent starting, brake, bidirectional rotation and stands for over torque, +/- 10% voltage compensation is permitted when motor operate in low frequency, and can perform a high starting torque to meet overload starting. Frame size 200 and above motors are suitable for re-greasing during operation, which can prolong the maintenance time schedule and improve the working efficiency. Accessories like overheat sensors, space heater, encoder, electromagnetic brake can be mounted in order to meet the customer requirement.

The insulation class of HTG motor is class F or H (upon request). Ingress protection is IP55, IP56 or IP65 are also suitable according to the customer requirement; the cooling type is 1C41 0; mounting type is IMB3 (frame size 112-400), also available in IMB5 or IMB35 within frame size 112-250. The rated voltage is 380V, rated frequency is 50Hz. Frequency range can be set within 5-50Hz in constant torque. Frequency range can be set according to the required speed range of the customer's requirement.

A special roller table motors can be designed upon customer's request.



Application

HTG motors are suitable for rolling mill industry, specifically in case of working and conveying roller table, also suitable for other similar mechanical equipment.

HTG motor can be direct coupling with rotating roller, through selecting the operating speed and frequency. The variable speed range can be widely selected if combining with other mechanical speed reducer –gearbox, which allow enormous possibilities. The speed range can be controlled by the frequency converter.

Every roller table conveying equipment uses several numbers of roller table motors. Our HGT motors are suitable for all kinds of duty cycle. For standard intermittent use in service duty cycle S5, a commonly load continuous rate of 60%, starting 300 times per hour.

Ordering information

- Please specify the motor type, output, rated voltage, rated frequency, poles (or rated speed), frequency range, mounting type, duty cycle etc.
- If no special indication, normally the terminal box is on the top of the motor, cable entry facing the non-driving end, and customer can specify the orientation of the cable entry.
- Any special requirement please specify when in enquiry.

The technical data in the catalogue is only for reference, and may not inform you immediately



Technical performance data

Roller Table Motor 2 Pole, 380V.50Hz, Isol. Cl. F,

Type	Pole	Output KW	Rated Torque N.m	Breakdown Torque (Time)	Rated Current A	Maximum Current A	Moment of inertia Kg.m2	Weight Kg
HTG 112 L	4	2	12.7	2.5	4.38	11.2	0.0166	75
HTG 132 MA	4	3	19.1	2.5	6.01	16.5	0.0251	85
HTG 132 MB	4	4	25.5	2.5	8.41	20.4	0.0333	95
HTG 1605	4	5.5	35.0	2.5	10.71	28.3	0.1140	160
HTG 160 LA	4	7.5	47.8	2.5	14.94	36.2	0.1140	180
HTG 160 LB	4	11	70.0	2.5	21.85	51.9	0.1400	190
HTG 180 L	4	15	95.5	3.0	29.24	82.0	0.294	240
HTG 200 L A	4	18.5	117.8	3.0	35.43	101	0.566	295
HTG 200 LB	4	22	140	3.0	41.69	119	0.632	315
HTG 225 M	4	30	191	3.0	55.14	160	1.10	470
HTG 250 MA	4	37	235	3.0	68.09	197	2.57	572
HTG 250 MB	4	45	286	3.0	84.22	236	2.57	617
HTG 280 LA	4	55	350	3.0	102.2	283	5.12	750
HTG 280 LB	4	75	477	3.0	131.0	387	6.95	800
HTG 3155	4	90	573	3.0	154.7	465	9.6	1080
HTG 315 MA	4	110	700	3.0	189.6	561	11.4	1200
HTG 315 MB	4	132	840	3.0	226.7	672	12.5	1290



Technical performance data

Roller Table Motor 6 Pole, 380V. 50Hz, Isol. Cl. F,

Type	Pole	Output KW	Rated Torque N.m	Breakdown Torque (Time)	Rated Current A	Maximum Current A	Moment of inertia Kg.m ²	Weight Kg
HTG 112 L	6	1.1	10.5	2.5	3.05	6.50	0.0166	75
HTG 132 MA	6	2	19.1	2.5	5.29	10.70	0.0251	95
HTG 132 MB	6	3	28.7	2.5	7.61	15.70	0.0333	105
HTG 1605	6	4	38.2	2.5	9.54	20.90	0.1 14	165
HTG 160 LA	6	5.5	52.5	2.5	12.60	28.50	0.114	200
HTG 160 LB	6	7.5	71.6	2.5	16.92	38.30	0.140	210
HTG 180 L	6	11	105.1	2.5	24.23	51.80	0.294	235
HTG 200 LA	6	15	143.3	3.0	31.99	85.00	0.566	310
HTG 200 LB	6	18.5	176.7	3.0	39.78	104.0	0.632	345
HTG 225 M	6	22	210.1	3.0	41.47	128.8	1.100	445
HTG 250 MA	6	25	238.8	3.0	48.11	135.9	2.570	563
HTG 250 MB	6	30	286.5	3.0	57.28	162.7	2.570	599
HTG 280 LA	6	37	353.4	3.0	73.57	196.0	5.120	750
HTG 280 LB	6	45	429.8	3.0	84.41	240.1	6.950	800
HTG 315 SA	6	55	525.3	3.0	98.51	314.8	9.600	1000
HTG 315 MA	6	75	716.3	3.0	133.54	423.9	11.40	1130
HTG 315 MB	6	90	859.5	3.0	160.20	501.9	12.50	1230
HTG 355 LA	6	110	1050.5	3.0	194.96	595.0	18.60	1650
HTG 355 LB	6	132	1260.6	3.0	235.37	707.4	22.20	1760
HTG 355 LC	6	160	1528.0	3.0	283.74	856.5	25.60	1850
HTG 400 LA	6	185	1766.8	3.0	352.97	1018.6	37.10	2360
HTG 400 LB	6	200	1910.0	3.0	364.96	1150.0	42.60	2460
HTG 400 LC	6	220	2101.0	3.0	406.76	1235.1	51.70	2560



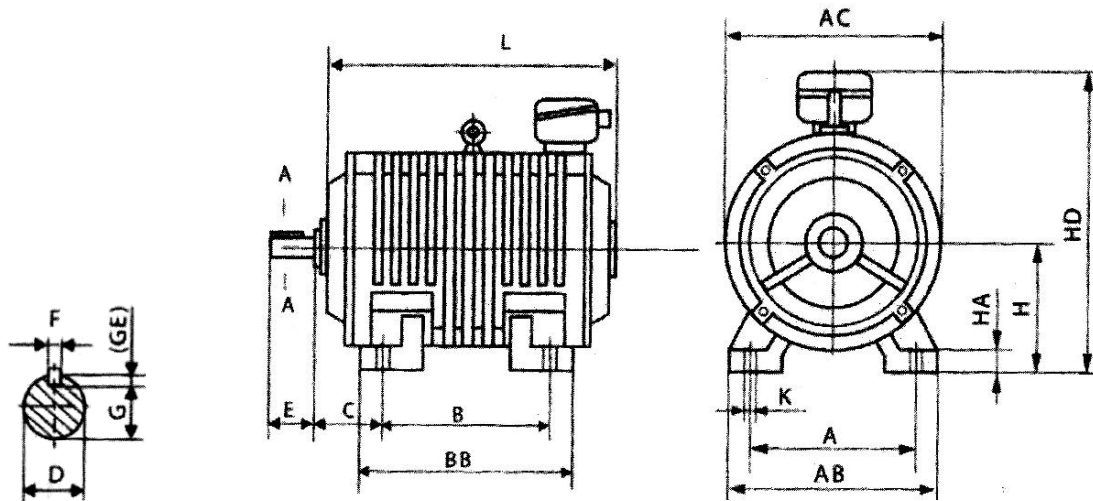
Technical performance data

Roller Table Motor 8 Pole, 380V. 50Hz, Isol. Cl. F,

Type	Pole	Output KW	Rated Torque N.m	Breakdown Torque (Time)	Rated Current A	Maximum Current A	Moment of inertia Kg.m ²	Weight Kg
HTG 180 L	8	7.5	95.5	2.5	18.37	39.9	0.294	225
HTG 200 LA	8	11	140	2.5	26.89	55.7	0.566	310
HTG 200 LB	8	13	165.5	3.0	30.22	82.9	0.632	325
HTG 225 M	8	15	191.0	3.0	32.53	99.2	1.10	435
HTG 250 MA	8	18.5	235.6	3.0	39.82	111.3	2.57	563
HTG 250 MB	8	22	280.1	3.0	48.05	129.9	2.57	595
HTG 280 LA	8	30	382.0	3.0	68.39	167.9	5.12	750
HTG 280 LB	8	37	471.1	3.0	80.64	207.4	6.95	800
HTG 215 SA	8	45	573.0	3.0	87.00	248.9	9.60	1000
HTG 315 MA	8	55	700.3	3.0	108.00	303.5	11.4	1070
HTG 315 MB	8	75	955.0	3.0	151.3	403.9	12.5	1230
HTG 355 LA	8	90	1146.0	3.0	163.27	513.6	18.6	1600
HTG 355 LB	8	110	1400.7	3.0	198.08	627.8	22.2	1690
HTG 355 LC	8	132	1680.8	3.0	239.04	783.1	25.6	1780
HTG 400 LA	8	160	2037.3	3.0	315.99	1097.7	37.1	2450
HTG 400 LB	8	185	2355.7	3.0	372.61	1155.3	42.6	2580
HTG 400 LC	8	200	2546.7	3.0	434.34	1155.8	51.7	2730



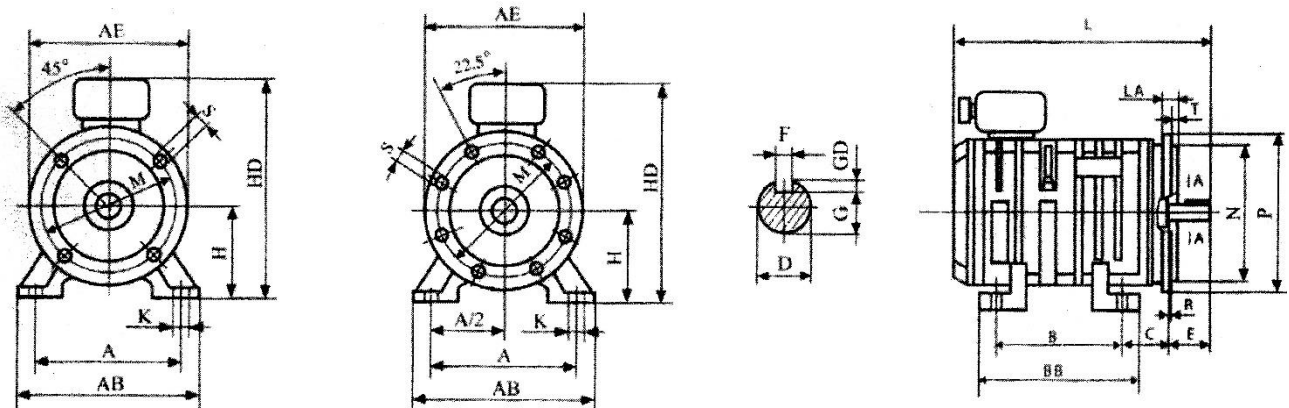
Mounting and outline Dimensions in IMB3



Type	Mounting Dimensions and Tolerance											Outline Dimensions					
	A	A/2	B	C	D	E	F	G	GD	H	K	AB	AC	BB	HD	HA	L
HTG 112 L	190	95	159	70	32	80	10	27	8	112	12	235	240	200	330	20	460
HTG 132M	216	108	178	89	38	80	10	33	8	132	12	265	265	236	355	23	520
HTG 160 S	254	127	178	108	48	110	14	42.5	9	160	15	315	315	236	410	25	650
HTG 160 L	254	127	254	108	48	110	14	42.5	9	160	15	315	315	310	410	25	700
HTG 180 L	279	139.5	279	121	55	110	16	49	10	180	15	360	360	350	500	30	750
HTG 200 L	318	159	305	133	65	140	18	58	11	200	19	415	415	400	570	35	860
HTG 225 M	356	178	311	149	75	140	20	67.5	12	225	19	470	470	415	620	35	950
HTG 250 M	406	203	349	168	80	140	22	71	14	250	24	515	510	450	680	40	990
HTG 280 M	457	228.5	419	190	85	140	22	76	14	280	24	580	580	580	720	40	1100
HTG 280 L	457	228.5	257	190	85	170	22	76	14	280	24	580	580	580	720	40	1100
HTG 315 S	508	254	406	216	90	170	25	81	14	315	28	640	645	650	860	44	1160
HTG 315 M	508	254	457	216	90	170	25	81	14	315	28	640	645	650	860	44	1250
HTG 355 S	610	305	500	254	100	210	28	90	16	355	28	740	748	790	960	45	1400
HTG 355 M	610	305	560	254	100	210	28	90	16	355	28	740	748	790	960	45	1400
HTG 355 L	610	305	630	254	100	210	28	90	16	355	28	740	748	790	960	45	1400
HTG 400 L	686	343	710	280	110	250	28	100	16	400	35	855	850	920	1040	55	1600



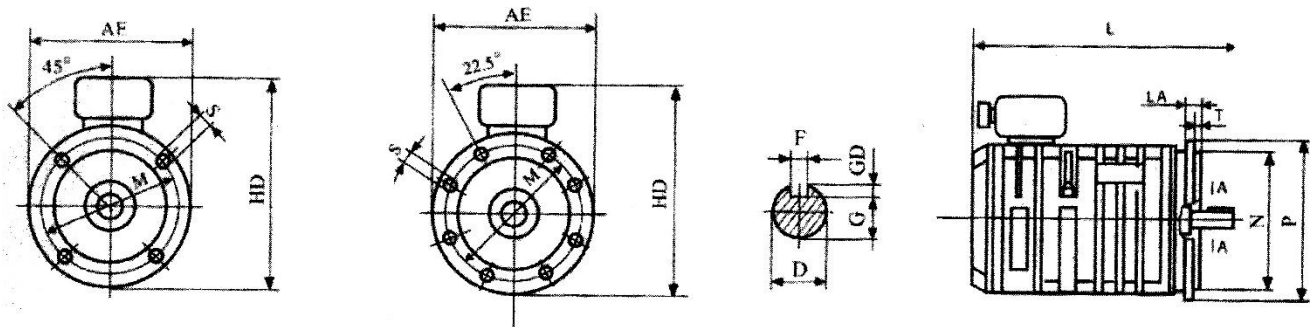
Mounting and outline Dimensions in IMB35



Type	Mounting Dimensions and Tolerance															
	A	B	C	D	E	F	G	GD	H	K	M	N	P	R	S	T
HTG 112 L	190	159	70	32	80	10	27	8	112	12	215	180	250	0	15	4
HTG 132 M	216	178	89	38	80	10	33	8	132	12	265	230	300	0	15	4
HTG 160 S	254	178	108	48	110	14	42.5	9	160	15	300	250	350	0	190	5
HTG 160 L	254	254	108	48	110	14	42.5	9	160	15	300	250	350	0	19	5
HTG 180 L	279	279	121	55	110	16	49	10	180	15	300	250	350	0	19	5
HTG 200 L	318	305	133	65	140	18	58	11	200	19	400	350	450	0	19	5
HTG 225 M	356	311	149	75	140	20	67.5	12	225	19	400	350	450	0	19	5
HTG 250 M	406	349	168	80	170	22	71	14	250	24	500	450	550	0	19	5



Mounting and outline Dimensions in IMB5



Type	Mounting Dimensions and Tolerance						
	AB	AE	BB	LA	HA	HD	L
HTG 112 L	235	250	200	12	20	330	460
HTG 132 M	265	300	236	12	23	355	520
HTG 160 S	315	350	236	14	25	410	650
HTG 160 L	315	350	310	14	25	410	700
HTG 180 L	360	360	350	16	30	500	750
HTG 200 L	415	450	400	18	35	570	860
HTG 225 M	470	470	415	18	35	620	950
HTG 250 M	510	550	450	22	40	680	990