



NEMA-PREMIUM DREHSTROMMOTOREN

Leistungsfähigkeit: Premium, Kühlart: IC411 Eigenbelüftet

THREE - PHASE NEMA MOTORS

Efficiency: Premium, Cooling Method: IC411 Self-ventilated

MOTEURS TRIPHASÉ NEMA

L'efficacité: Premium, Méthode de refroidissement: IC411 Autoventilés

220V/380V - 460V - 60 Hz - CL F - IP55, NEMA DESIGN B

Service Factor: 1.15

Typ	Nennleistung	Nenn-drehzahl	N-strom 220V / 380V		N-strom 460V	Leistungs-faktor	Wirkungs-grad	Bemess. Drehmom.	Rotorblockier strom 460V	Drehmom. gesperrt	Drehmom. max.	Nema Code	Gewicht	
Type	Rated output	Rated speed	Current 220V / 380V		Current 460V	Power factor	Efficiency %	Rated torque	Lock. Rotor current 460V	Locked torque	Maximum torque	Nema Code	Weight	
Type	Puissance nominale	Vitesse nominale	Intensité 220V / 380V		Intensité 460V	Facteur de puissance	Rendement %	Couple nominal	Courant Rotor bloqué 460V	Couple bloqué	Couple max.	Nema Code	Masse	
	HP	KW	1 / min	A	A	A	cos φ	%	Nm	A	%	%	Code	kg

2 Polig / 2 Poles / 2 Pôles

H3N143TA	1.0	0.75	3460	3.0	1.8	1.5	0.84	77.0	2.07	15	175	250	L	25
H3N143TB	1.5	1.1	3490	4.1	2.4	2.0	0.84	84.0	3.01	20	200	270	K	26
H3N145T	2.0	1.5	3490	5.4	3.1	2.6	0.86	85.5	4.10	25	200	260	J	28
H3N182T	3.0	2.2	3500	7.7	4.4	3.7	0.87	86.5	6.00	32	200	280	K	49
H3N184T	5.0	3.7	3500	12.3	7.1	5.9	0.89	88.5	10.10	46	200	280	J	53
H3N213T	7.5	5.5	3520	17.9	10.4	8.6	0.90	89.5	14.92	64	140	250	J	88
H3N215T	10	7.5	3520	24.3	14.1	11.6	0.90	90.2	20.35	81	150	250	J	95
H3N254T	15	11	3550	36.1	20.9	17.3	0.88	91.0	29.59	116	170	240	K	155
H3N256T	20	15	3545	48.7	28.2	23.3	0.89	91.0	40.41	145	150	210	J	158
H3N284T	25	18.5	3555	60.2	34.9	28.8	0.88	91.7	49.70	183	140	220	H	220
H3N286T	30	22	3555	71.6	41.5	34.3	0.88	91.7	59.10	218	140	220	H	240
H3N324T	40	30	3555	96.9	56.1	46.4	0.88	92.4	80.59	290	150	230	H	292
H3N326T	50	37	3555	119	68.8	56.8	0.88	93.0	99.40	363	150	230	H	317
H3N364T	60	45	3570	144	83.1	68.7	0.88	93.6	120.4	435	150	210	H	385
H3N365T	75	55	3570	175	102	83.9	0.88	93.6	147.1	543	140	210	H	411
H3N405T	100	75	3575	235	136	113	0.89	94.1	200.3	725	150	250	J	575
H3N444T	125	90	3585	277	160	132	0.90	95.0	239.7	908	130	230	H	746
H3N445T	150	110	3585	338	196	162	0.90	95.0	293.0	1085	140	230	H	792
H3N447T	200	150	3585	454	263	217	0.91	95.4	399.6	1450	150	230	G	1003
H3N449TA	250	185	3575	564	326	272	0.90	95.8	498.0	1825	110	175	H	1081
H3N449TB	300	220	3575	670	388	330	0.90	95.8	598.0	2200	110	175	H	1273





NEMA-PREMIUM DREHSTROMMOTOREN

Leistungsfähigkeit: Premium, Kühlart: IC411 Eigenbelüftet

THREE - PHASE NEMA MOTORS

Efficiency: Premium, Cooling Method: IC411 Self-ventilated

MOTEURS TRIPHASÉ NEMA

L'efficacité: Premium, Méthode de refroidissement: IC411 Autoventilés

220V/380V - 460V - 60 Hz - CL F - IP55, NEMA DESIGN B

Service Factor: 1.15

Typ	Nennleistung	Nenn-drehzahl	N-strom 220V / 380V		N-strom 460V	Leistungs-faktor	Wirkungs-grad	Bemess. Drehmom.	Rotorblockier-strom 460V	Drehmom. gesperrt	Drehmom. max.	Nema Code	Gewicht	
Type	Rated output	Rated speed	Current 220V / 380V		Current 460V	Power factor	Efficiency %	Rated torque	Lock. Rotor current 460V	Locked torque	Maximum torque	Nema Code	Weight	
Type	Puissance nominale	Vitesse nominale	Intensité 220V / 380V		Intensité 460V	Facteur de puissance	Rendement %	Couple nominal	Courant Rotor bloqué 460V	Couple bloqué	Couple max.	Nema Code	Masse	
	HP	KW	1 / min	A	A	A	cos φ	%	Nm	A	%	%	Code	kg

4 Polig / 4 Poles / 4 Pôles

H3N143TA	1.0	0.75	1760	3.1	1.8	1.5	0.74	85.5	4.07	15	275	300	G	26
H3N145TA	1.5	1.1	1755	4.4	2.5	2.1	0.76	86.5	5.99	20	275	300	H	27
H3N145TB	2.0	1.5	1755	5.8	3.4	2.8	0.78	86.5	8.16	25	250	300	H	29
H3N182T	3.0	2.2	1760	7.8	4.5	3.7	0.83	89.5	11.94	32	215	250	H	52
H3N184T	5.0	3.7	1755	12.8	7.4	6.1	0.85	89.5	20.13	46	215	250	J	54
H3N213T	7.5	5.5	1770	19.5	11.3	9.3	0.81	91.7	29.68	64	180	250	K	97
H3N215T	10	7.5	1770	25.9	15.0	12.4	0.83	91.7	40.47	81	180	250	H	100
H3N254T	15	11	1780	38.1	22.1	18.2	0.82	92.4	59.02	116	160	220	J	161
H3N256T	20	15	1780	50.4	29.2	24.1	0.84	93.0	80.48	145	160	220	H	173
H3N284T	25	18.5	1775	61.1	35.4	29.2	0.85	93.6	99.54	183	150	220	H	235
H3N286T	30	22	1775	72.7	42.1	34.7	0.85	93.6	118.4	218	150	220	J	236
H3N324T	40	30	1780	97.4	56.4	46.6	0.86	94.1	161.0	290	160	230	H	308
H3N326T	50	37	1780	120	69.3	57.2	0.86	94.5	198.5	363	160	240	J	331
H3N364T	60	45	1785	145	83.8	69.2	0.86	95.0	240.8	435	140	200	H	405
H3N365T	75	55	1780	176	102	84.2	0.86	95.4	295.1	543	150	220	H	435
H3N405T	100	75	1790	237	137	114	0.87	95.4	400.1	725	150	230	H	600
H3N444T	125	90	1790	288	167	138	0.86	95.4	480.2	908	130	220	H	748
H3N445T	150	110	1790	351	203	168	0.86	95.8	586.9	1085	130	220	H	806
H3N447T	200	150	1790	476	276	228	0.86	96.2	800.3	1450	120	220	H	1055
H3N449TA	250	185	1785	570	330	271	0.89	95.8	998.0	1825	125	175	H	1183
H3N449TB	300	220	1785	670	388	328	0.90	95.8	1198	2200	125	175	H	1273




NEMA-PREMIUM DREHSTROMMOTOREN

Leistungsfähigkeit: Premium, Kühlart: IC411 Eigenbelüftet

THREE - PHASE NEMA MOTORS

Efficiency: Premium, Cooling Method: IC411 Self-ventilated

MOTEURS TRIPHASÉ NEMA

L'efficacité: Premium, Méthode de refroidissement: IC411 Autoventilés

220V/380V - 460V - 60 Hz - CL F - IP55, NEMA DESIGN B
Service Factor: 1.15

Typ	Nennleistung	Nenn-drehzahl	N-strom 220V / 380V		N-strom 460V	Leistungs- faktor	Wirkungs- grad	Bemess. Drehmom.	Rotorblockier strom 460V	Drehmom. gesperrt	Drehmom. max.	Nema Code	Gewicht	
Type	Rated output	Rated speed	Current 220V / 380V		Current 460V	Power factor	Efficiency %	Rated torque	Lock. Rotor current 460V	Locked torque	Maximum torque	Nema Code	Weight	
Type	Puissance nominale	Vitesse nominale	Intensité 220V / 380V		Intensité 460V	Facteur de puissance	Rendement %	Couple nominal	Courant Rotor bloqué 460V	Couple bloqué	Couple max.	Nema Code	Masse	
	HP	KW	1 / min	A	A	A	cos φ	%	Nm	A	%	%	Code	kg

6 Polig / 6 Poles / 6 Pôles

H3N145T	1.0	0.75	1160	3.3	1.9	1.6	0.72	82.5	6.17	15	170	265	J	27
H3N182T	1.5	1.1	1180	4.6	2.7	2.2	0.72	87.5	8.90	20	180	280	H	47
H3N184T	2.0	1.5	1180	6.0	3.5	2.9	0.74	88.5	12.1	25	180	280	G	51
H3N213T	3.0	2.2	1185	9.2	5.3	4.4	0.70	89.5	17.7	32	155	230	H	90
H3N215T	5.0	3.7	1180	15.1	8.7	7.2	0.72	89.5	29.9	46	155	230	H	100
H3N254T	7.5	5.5	1185	21.8	12.6	10.4	0.73	91.0	44.3	64	160	230	G	143
H3N256T	10	7.5	1185	29.7	17.2	14.2	0.73	91.0	60.4	81	160	220	H	150
H3N284T	15	11	1185	39.4	22.8	18.8	0.80	91.7	88.6	116	150	230	H	207
H3N286T	20	15	1185	52.4	30.3	25.1	0.82	91.7	120.9	145	140	220	H	223
H3N324T	25	18.5	1190	70.6	40.9	33.8	0.74	93.0	148.5	183	150	230	J	301
H3N326T	30	22	1185	80.7	46.7	38.6	0.77	93.0	177.3	218	140	210	J	308
H3N364T	40	30	1190	106	61.4	50.7	0.79	94.1	240.8	290	140	230	J	403
H3N365T	50	37	1190	131	75.7	62.5	0.79	94.1	296.9	363	145	230	J	411
H3N404T	60	45	1190	147	85.2	70.4	0.85	94.5	361.1	435	145	220	J	548
H3N405T	75	55	1190	180	104	86.0	0.85	94.5	441.4	543	145	220	H	582
H3N444T	100	75	1190	253	146	121	0.82	95.0	601.9	725	135	220	H	762
H3N445T	125	90	1195	304	176	145	0.82	95.0	719.2	907	135	220	H	809
H3N447T	150	110	1195	368	213	176	0.82	95.8	879.1	1085	140	240	H	1125
H3N449T	200	150	1192	490	284	234	0.84	95.8	1202	1450	120	210	H	1200
H3N449TA	250	185	1185	570	330	288	0.89	95.8	1503	1825	175	175	H	1271





NEMA-DREHSTROMMOTOREN

Leistungsfähigkeit: Epact, Kühlart: IC411 Eigenbelüftet

THREE - PHASE NEMA MOTORS

Efficiency: Epact, Cooling Method: IC411 Self-ventilated

MOTEURS TRIPHASÉ NEMA

L'efficacité: Epact, Méthode de refroidissement: IC411 Autoventilés



220V/380V - 460V - 60 Hz - CL F - IP55

Typ	Nennleistung	Nenn-drehzahl	N-strom 220V / 380V	N-strom 460V	Leistungs-faktor	Wirkungs-grad	Anzugs-moment	Rotorblockier-strom	Kipp-moment	Anzugs-strom	Nema Design	Nema Code	Trägheits-moment	Gewicht		
Type	Rated output	Rated speed	Current 220V / 380V	Current 460V	Power factor	Efficiency %	Lock. Rotor torque %	Lock. Rotor current	B-down Torque	Relative current	Nema Design	Nema Code	Moment of inertia	Weight		
Type	Puissance nominale	Vitesse nominale	Intensité 220V / 380V	Intensité 460V	Facteur de puissance	Rendement %	Couple à Rotor bloqué	Courant Rotor bloqué	Couple maximal	Courant démarrage	Nema Design	Nema Code	Moment d'inertie	Masse		
	HP	KW	1 / min	A	A	A	cos φ	%	MA / MN	A	MK / MN	la / ln	Design	Code	Kg/m2	kg

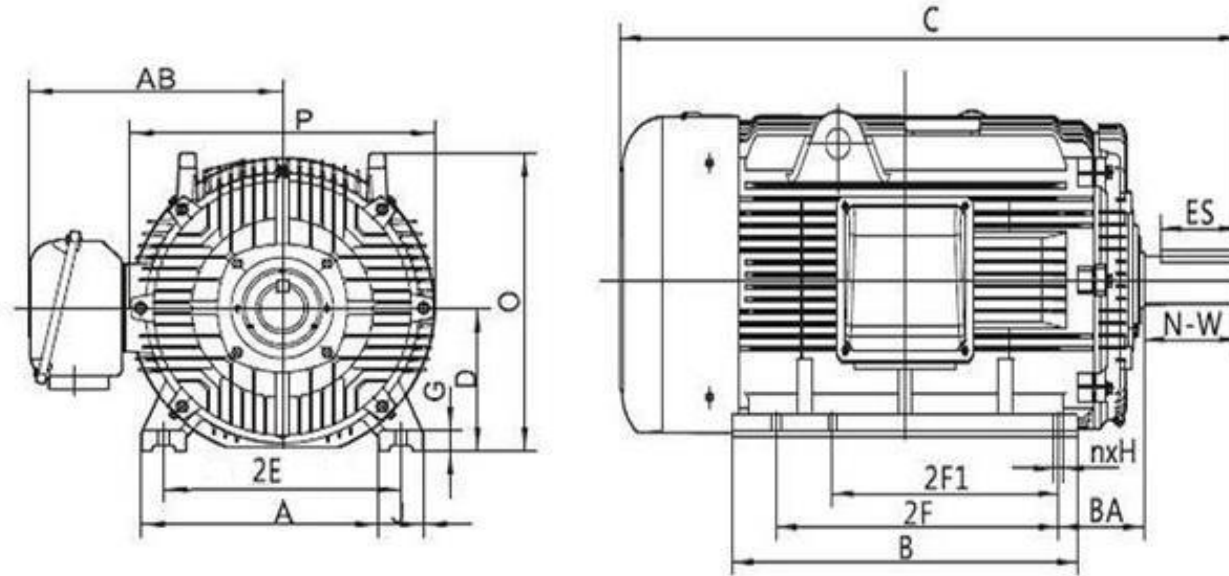
8 Polig / 8 Poles / 8 Pôles

HN143T-8	0.50	0.37	820	2.3	1.4	1.13	0.63	66.0	180	3.3	220	160	B	F	0.003	19
HN145T-8	0.75	0.55	820	4.0	2.3	1.97	0.51	70.0	260	7.1	300	230	B	J	0.004	22
HN182T-8	1.0	0.75	850	4.4	2.6	2.10	0.60	74.0	170	10.1	220	150	B	K	0.012	45
HN184T-8	1.5	1.1	850	6.3	3.6	3.00	0.60	77.0	170	11.9	220	150	B	H	0.015	47
HN213T-8	2.0	1.5	860	7.0	4.1	3.30	0.68	82.5	150	16.8	230	130	B	H	0.025	68
HN215T-8	3.0	2.2	860	10.1	5.9	4.90	0.68	84.0	190	25	230	170	B	H	0.031	73
HN254T-8	5.0	3.7	870	15.4	8.9	7.40	0.74	85.5	180	41	230	160	B	H	0.090	121
HN256T-8	7.5	5.5	870	22.8	13.2	11.1	0.74	85.5	170	58	230	150	B	G	0.110	133
HN284T-8	10	7.5	870	30.3	17.6	14.4	0.76	85.5	180	75	220	160	B	H	0.190	162
HN286T-8	15	11	870	44.5	25.8	21.6	0.76	85.5	180	110	220	160	B	G	0.240	178
HN324T-8	20	15	880	60.3	34.9	28.7	0.73	89.5	150	144	200	130	B	G	0.480	285
HN326T-8	25	18.5	880	74.4	43.1	36.0	0.73	89.5	150	180	200	130	B	G	0.750	321
HN364T-8	30	22	880	87.0	50.4	42.0	0.73	91.0	150	214	200	130	B	G	1.23	376
HN365T-8	40	30	880	117	67.8	56.0	0.74	91.0	150	285	200	130	B	G	1.47	421
HN404T-8	50	37	885	142	82.3	68.0	0.74	92.4	150	350	200	130	B	G	2.55	571
HN405T-8	60	45	885	173	100	82.0	0.74	92.4	150	430	200	130	B	G	2.90	571
HN444T-8	75	55	885	207	120	101	0.75	93.0	140	535	200	120	B	G	5.00	802
HN445T-8	100	75	885	283	164	134	0.75	93.0	140	720	200	120	B	G	6.00	802
HN504Z-8	125	90	885	332	192	165	0.76	93.6	140	890	200	120	B	G	6.10	1103
HN505Z-8	150	110	885	406	235	197	0.76	93.6	140	1080	200	120	B	G	7.30	1303
HN585Z-8	200	150	890	544	315	258	0.77	94.1	140	1440	200	120	B	G	12.20	1898
HN586Z-8	250	185	890	668	387	322	0.77	94.5	140	1800	200	120	B	G	15.20	2210
HN587Z-8	300	225	890	808	468	384	0.77	95.0	140	2150	200	120	B	G	18.60	2328



Foot mounting dimensions for H3N series of three-phase Nema Motors.
Frame Size 143-286

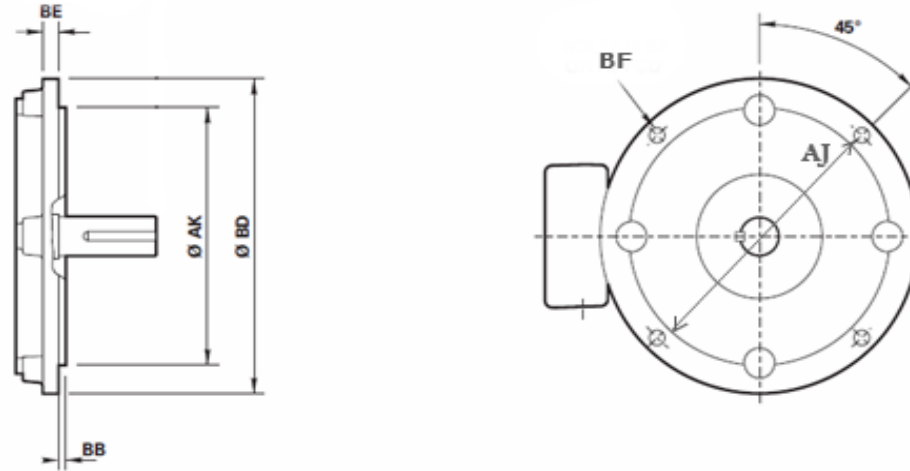
IM B3
IM 1011
Mounting options



Frame	A	B	C	D	2E	nxH	2F	2F1	G	J	P	AA	AB	BA
H3N143T	7.0	6.5	13.58	3.5	5.5	8x0.34	5.0	4.0	0.450	1.00	7.73	0.75	6.50	2.25
H3N145T	7.0	6.5	13.58	3.5	5.5	8x0.34	5.0	4.0	0.450	1.00	7.73	0.75	6.50	2.25
H3N182T	9.0	7.5	16.00	4.5	7.5	8x0.41	5.5	4.5	0.590	1.97	9.90	1.0	8.00	2.75
H3N184T	9.0	7.5	16.00	4.5	7.5	8x0.41	5.5	4.5	0.590	1.97	9.90	1.0	8.00	2.75
H3N213T	10.5	9.0	20.16	5.5	8.5	8x0.41	7.0	5.5	0.748	2.17	10.40	1.0	8.46	3.50
H3N215T	10.5	10.6	21.65	5.5	8.5	6x0.41	7.0	5.5	0.748	2.17	10.40	1.0	8.46	3.50
H3N254T-2	12.5	12.5	25.00	6.25	10.0	8x0.53	10.0	8.25	0.787	2.50	12.60	1.5	10.43	4.25
H3N254T-4-6	12.5	10.6	23.26	6.25	10.0	4x0.53	8.25	-	0.787	2.50	12.60	1.5	10.43	4.25
H3N256T	12.5	12.5	25.00	6.25	10.0	8x0.53	10.0	8.25	0.787	2.50	12.60	1.5	10.43	4.25
H3N284T	14.0	12.5	28.08	7.0	11.0	4x0.53	9.5	-	0.866	2.76	14.17	1.5	11.42	4.75
H3N284TS	14.0	12.5	26.66	7.0	11.0	4x0.53	9.5	-	0.866	2.76	14.17	1.5	11.42	4.75
H3N286T	14.0	14.0	29.52	7.0	11.0	8x0.53	11.0	9.5	0.866	2.76	14.17	1.5	11.42	4.75
H3N286TS	14.0	14.0	28.15	7.0	11.0	8x0.53	11.0	9.5	0.866	2.76	14.17	1.5	11.42	4.75

D-Face Flange mounting dimensions for H3N series of three-phase Nema Motors.
 Frame Size 143-286

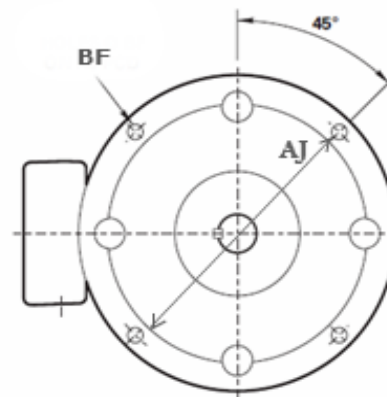
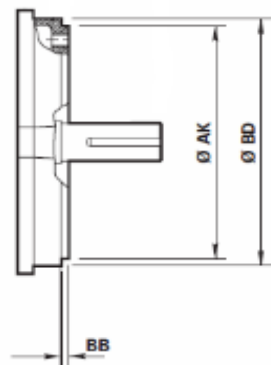
IM B5 (D Face)
 IM 3011
 Mounting options



Frame	AJ	AK	BB	BD	BE	BF
H3N143T	10.0	9	0.25	11	0.50	0.53
H3N145T	10.0	9	0.25	11	0.50	0.53
H3N182T	10.0	9	0.25	11	0.50	0.53
H3N184T	10.0	9	0.25	11	0.50	0.53
H3N213T	10.0	9	0.25	11	0.50	0.53
H3N215T	10.0	9	0.25	11	0.50	0.53
H3N254T-2	12.5	11	0.25	14	0.75	0.81
H3N254T-4,6	12.5	11	0.25	14	0.75	0.81
H3N256T	12.5	11	0.25	14	0.75	0.81
H3N284T	12.5	11	0.25	14	0.75	0.81
H3N284TS	12.5	11	0.25	14	0.75	0.81
H3N286T	12.5	11	0.25	14	0.75	0.81
H3N286TS	12.5	11	0.25	14	0.75	0.81

C-Face Flange mounting dimensions for H3N series of three-phase Nema motors.
 Frame Size 143-286

IM B14 (C Face)
 IM 3601
 Mounting options



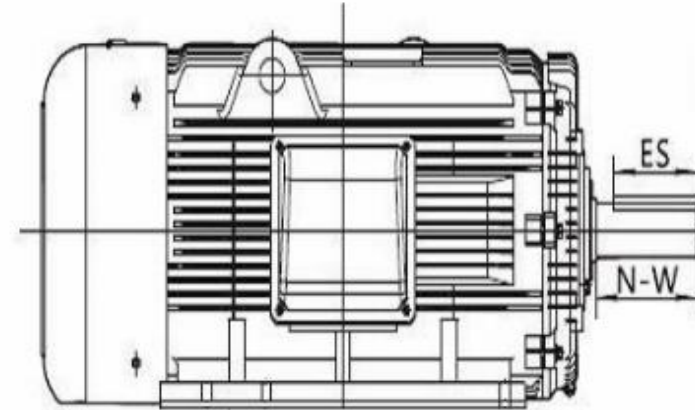
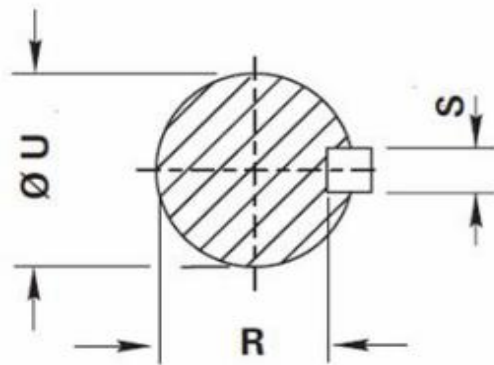
Frame	AJ	AK	BB	BD	BF
H3N143T	5.875	4.5	0.16	6.5	3/8 - 16
H3N145T	5.875	4.5	0.16	6.5	3/8 - 16
H3N182T	7.25	8.5	0.25	9.0	1/2 - 13
H3N184T	7.25	8.5	0.25	9.0	1/2 - 13
H3N213T	7.25	8.5	0.25	9.0	1/2 - 13
H3N215T	7.25	8.5	0.25	9.0	1/2 - 13
H3N254T-2	7.25	8.5	0.25	10.0	1/2 - 13
H3N254T-4,6	7.25	8.5	0.25	10.0	1/2 - 13
H3N256T	7.25	8.5	0.25	10.0	1/2 - 13
H3N284T	9.00	10.5	0.25	11.25	1/2 - 13
H3N284TS	9.00	10.5	0.25	11.25	1/2 - 13
H3N286T	9.00	10.5	0.25	11.25	1/2 - 13
H3N286TS	9.00	10.5	0.25	11.25	1/2 - 13



HOFFMANN TECHNICS AG

Shaft dimensions for H3N series of three-phase Nema motors.
 Frame Size 143-286

SHAFT



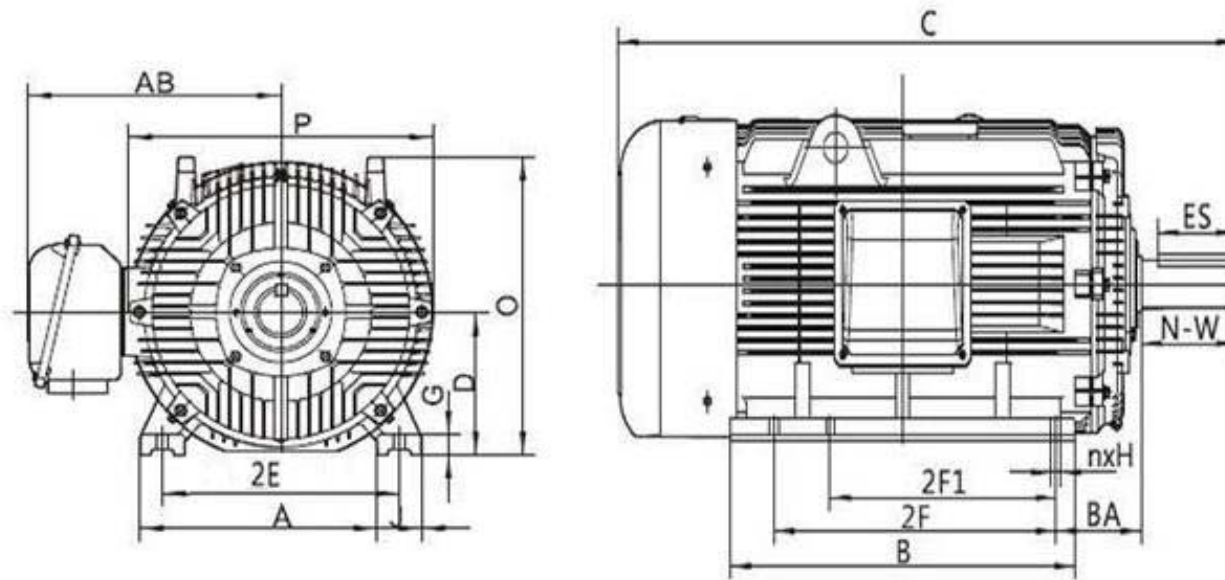
Frame	ES	N-W	R	S	U
H3N143T	1.41	2.25	0.771	0.188	0.875
H3N145T	1.41	2.25	0.771	0.188	0.875
H3N182T	1.78	2.75	0.986	0.250	1.125
H3N184T	1.78	2.75	0.986	0.250	1.125
H3N213T	2.41	3.38	1.201	0.312	1.375
H3N215T	2.41	3.38	1.201	0.312	1.375
H3N254T 2	2.91	4.00	1.416	0.375	1.625
H3N254T 4,6	2.91	4.00	1.416	0.375	1.625
H3N256T	2.91	4.00	1.416	0.375	1.625
H3N284T	3.28	4.62	1.591	0.500	1.875
H3N284TS	1.91	3.25	1.416	0.375	1.625
H3N286T	3.28	4.62	1.591	0.500	1.875
H3N286TS	1.91	3.25	1.416	0.375	1.625



HOFFMANN TECHNICS AG

Foot mounting dimensions for H3N series of three-phase Nema Motors.
Frame Size 324-444

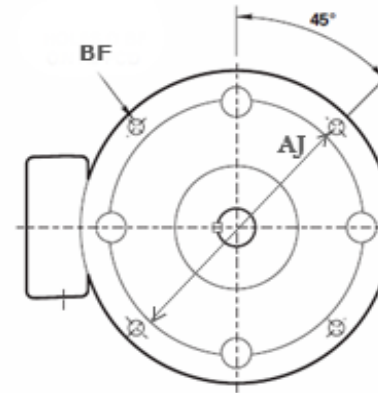
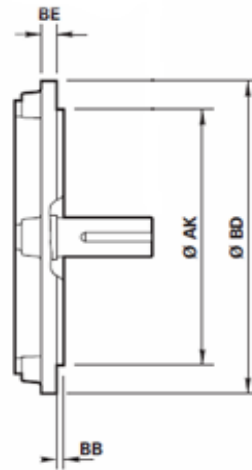
IM B3
IM 1011
Mounting options



Frame	A	B	C	D	2E	nxH	2F	2F1	G	J	P	AA	AB	BA
H3N324T	16	14,7	31,05	8	12,50	8x0.66	12,00	10,50	1,18	2,76	15,75	2	14,17	5,25
H3N324TS	16	14,7	29,55	8	12,50	8x0.66	12,00	10,50	1,18	2,76	15,75	2	14,17	5,25
H3N326T	16	16,3	32,74	8	12,50	6x0.66	12,00	10,50	1,18	2,76	15,75	2	14,17	5,25
H3N326TS	16	16,3	31,24	8	12,50	6x0.66	12,00	10,50	1,18	2,76	15,75	2	14,17	5,25
H3N364T	18	16,9	35,24	9	14,00	8x0.66	-	11,25	1,22	2,95	17,70	3	15,15	5,88
H3N364TS	18	16,9	33,11	9	14,00	8x0.66	-	11,25	1,22	2,95	17,70	3	15,15	5,88
H3N365T	18	18,5	36,82	9	14,00	6x0.66	12,25	11,25	1,22	2,95	17,70	3	15,15	5,88
H3N365TS	18	18,5	34,69	9	14,00	6x0.66	12,25	11,25	1,22	2,95	17,70	3	15,15	5,88
H3N404T	20	15,35	36,61	10	16,00	4x0.81	12,25	-	1,18	3,15	21,50	3	18,50	6,62
H3N404TS	20	15,35	33,61	10	16,00	4x0.81	12,25	-	1,18	3,15	21,50	3	18,50	6,62
H3N405T	20	17,0	38,03	10	16,00	8x0.81	13,75	12,25	1,18	3,15	21,50	3	18,50	6,62
H3N405TS	20	17,0	35,03	10	16,00	8x0.81	13,75	12,25	1,18	3,15	21,50	3	18,50	6,62
H3N444T	22	18,5	42,50	11	18,00	4x0.81	14,50	-	1,38	3,35	23,43	2x3	19,41	7,50
H3N444TS	22	18,5	38,75	11	18,00	4x0.81	14,50	-	1,38	3,35	23,43	2x3	19,41	7,50

D- Face Flange mounting dimensions for H3N series of three-phase Nema motors.
 Frame Size 324-444

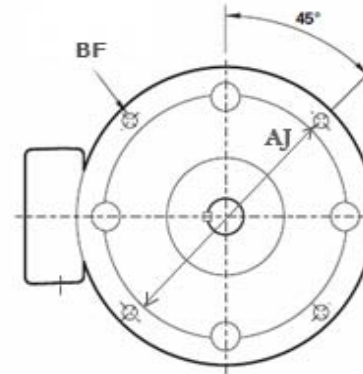
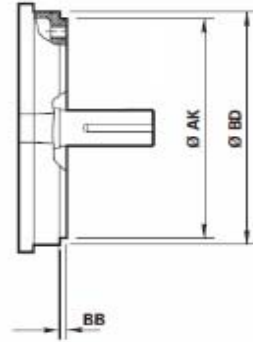
IM B5 (D-Face)
 IM 3011
 Mounting options



Frame	AJ	AK	BB	BD	BE	BF
H3N324T	16	14	0,25	18	0,75	0,81
H3N324TS	16	14	0,25	18	0,75	0,81
H3N326T	16	14	0,25	18	0,75	0,81
H3N326TS	16	14	0,25	18	0,75	0,81
H3N364T	16	14	0,25	18	0,75	0,81
H3N364TS	16	14	0,25	18	0,75	0,81
H3N365T	16	14	0,25	18	0,75	0,81
H3N365TS	16	14	0,25	18	0,75	0,81
H3N404T	20	18	0,25	22	1,00	0,81
H3N404TS	20	18	0,25	22	1,00	0,81
H3N405T	20	18	0,25	22	1,00	0,81
H3N405TS	20	18	0,25	22	1,00	0,81
H3N444T	20	18	0,25	22	1,00	0,81
H3N444TS	20	18	0,25	22	1,00	0,81

C- Face Flange mounting dimensions for H3N series of three-phase Nema motors.
 Frame Size 324-444

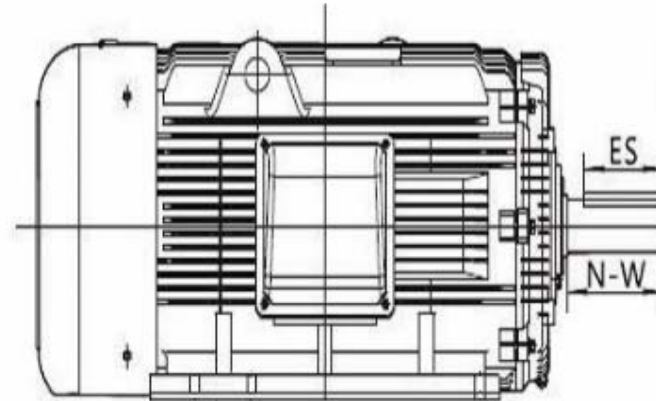
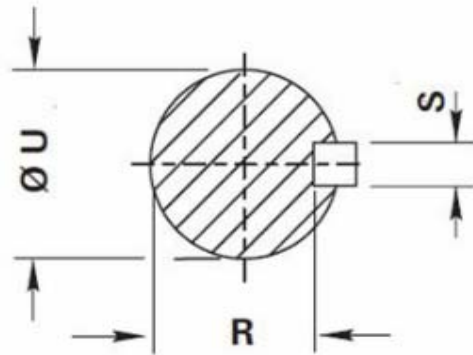
IM B14 (C Face)
 IM 3601
 Mounting options



Frame	AJ	AK	BB	BD	BF
H3N324T	11	12,5	0,25	14,0	5/8 - 11
H3N324TS	11	12,5	0,25	14,0	5/8 - 11
H3N326T	11	12,5	0,25	14,0	5/8 - 11
H3N326TS	11	12,5	0,25	14,0	5/8 - 11
H3N364T	11	12,5	0,25	14,0	5/8 - 11
H3N364TS	11	12,5	0,25	14,0	5/8 - 11
H3N365T	11	12,5	0,25	14,0	5/8 - 11
H3N365TS	11	12,5	0,25	14,0	5/8 - 11
H3N404T	11	12,5	0,25	15,5	5/8 - 11
H3N404TS	11	12,5	0,25	15,5	5/8 - 11
H3N405T	11	12,5	0,25	15,5	5/8 - 11
H3N405TS	11	12,5	0,25	15,5	5/8 - 11
H3N444T	14	16,0	0,25	18,0	5/8 - 11
H3N444TS	14	16,0	0,25	18,0	5/8 - 11

Shaft dimensions for H3N series of three-phase Nema motors.
 Frame Size 324-444

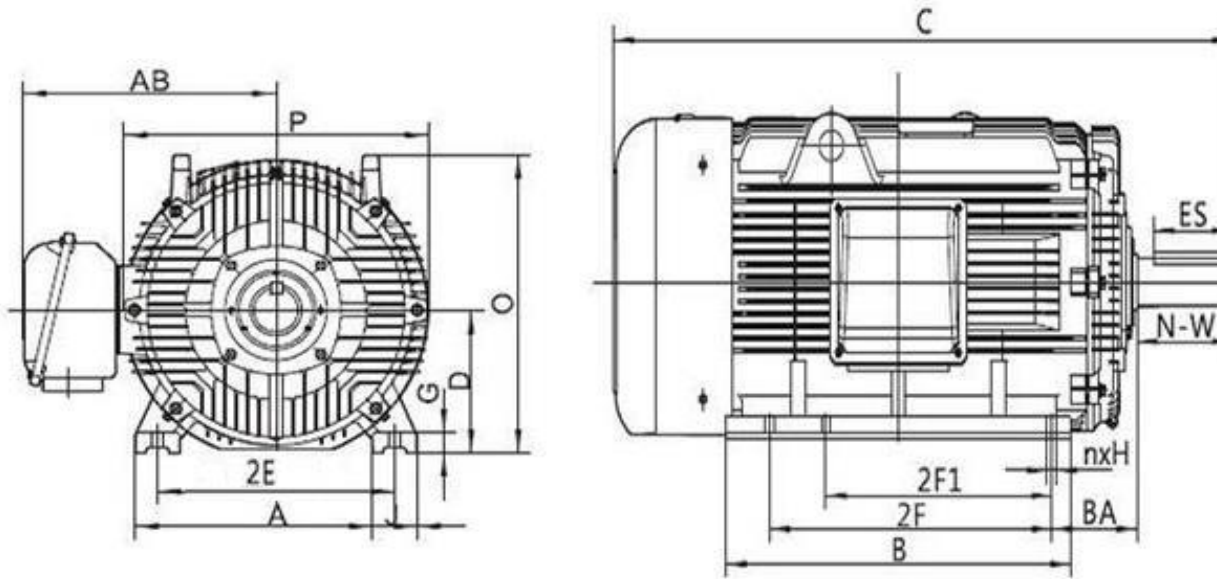
SHAFT



Frame	ES	N-W	R	S	U
H3N324T	3,91	5,25	1,845	0,50	2,125
H3N324TS	2,03	3,75	1,591	0,50	1,875
H3N326T	3,91	5,25	1,845	0,50	2,125
H3N326TS	2,03	3,75	1,591	0,50	1,875
H3N364T	4,28	5,88	2,021	0,625	2,375
H3N364TS	2,03	3,75	1,591	0,50	1,875
H3N365T	4,28	5,88	2,021	0,625	2,375
H3N365TS	2,03	3,75	1,591	0,50	1,875
H3N404T	5,65	7,25	2,450	0,75	2,875
H3N404TS	2,78	4,25	1,845	0,50	2,125
H3N405T	5,65	7,25	2,450	0,75	2,875
H3N405TS	2,78	4,25	1,845	0,50	2,125
H3N444T	6,91	8,50	2,880	0,875	3,375
H3N444TS	3,03	4,75	2,021	0,625	2,375

Foot mounting dimensions for H3N series of three-phase Nema Motors.
Frame Size 445-587

IM B3
IM 1011
Mounting options

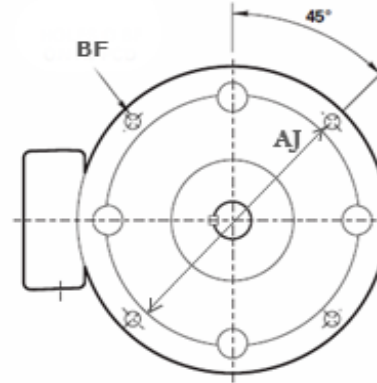
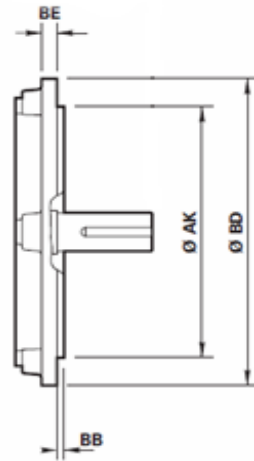


HOFFMANN TECHNICS AG

Frame	A	B	C	D	2E	nxH	2F	2F1	G	J	P	AA	AB	BA
H3N445T	22.00	20.5	44.50	11.0	18	8x0.81	16.5	14.5	1.38	3.35	23.43	2x3	19.41	7.5
H3N445TS	22.00	20.5	40.75	11.0	18	8x0.81	16.5	14.5	1.38	3.35	23.43	2x3	19.41	7.5
H3N447T	22.00	24.0	48.00	11.0	18	8x0.81	20	16.5	1.38	3.35	23.43	2x3	19.41	7.5
H3N447TS	22.00	24.0	44.25	11.0	18	8x0.81	20	16.5	1.38	3.35	23.43	2x3	19.41	7.5
H3N449T	22.00	31.0	55.00	11.0	18	6x0.81	25	20	1.57	3.35	23.43	2x3	19.41	7.5
H3N449TS	22.00	31.0	51.25	11.0	18	6x0.81	25	20	1.57	3.35	23.43	2x3	19.41	7.5
H3N504SZ	23.75	19.0	47.875	12.5	20		16		1.375	4.125	25.00	3	22.00	8.5
H3N504Z	23.75	19.0	51.625	12.5	20		16		1.375	4.125	25.00	3	22.00	8.5
H3N505SZ	23.75	21.0	50.50	12.5	20		18		1.375	4.125	25.00	3	22.00	8.5
H3N505Z	23.75	21.0	54.50	12.5	20		18		1.375	4.125	25.00	3	22.00	8.5
H3N585SZ	28.00	25.5	58.00	14.5	24		20		1.00	4	28.875	3	24.25	10.0
H3N585Z	28.00	25.5	60.25	14.5	24		20		1.00	4	28.875	3	24.25	10.0
H3N586SZ	28.00	27.75	62.75	14.5	24		22		1.00	4	28.875	3	24.25	10.0
H3N586Z	28.00	27.75	65.00	14.5	24		22		1.00	4	28.875	3	24.25	10.0
H3N587SZ	28.00	30.5	64.75	14.5	24		25		1.00	4	28.875	3	24.25	10.0
H3N587S	28.00	30.5	67.00	14.5	24		25		1.00	4	28.875	3	24.25	10.0

D- Face Flange mounting dimensions for H3N series of three-phase Nema motors.
Frame Size 445-587

IM B5 (D Face)
IM 3011
Mounting options



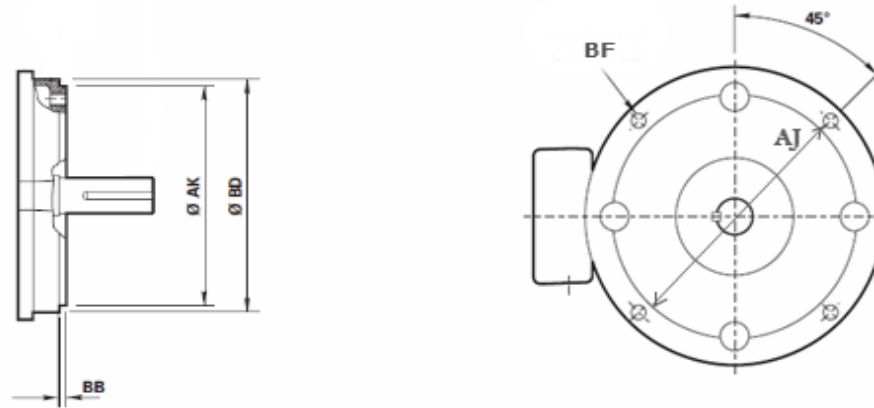
Frame	AJ	AK	BB	BD	BE	BF
H3N445T	20.00	18.00	0.25	22.0	1.00	0,81
H3N445TS	20.00	18.00	0.25	22.0	1.00	0,81
H3N447T	20.00	18.00	0.25	22.0	1.00	0,81
H3N447TS	20.00	18.00	0.25	22.0	1.00	0,81
H3N449TS	20.00	18.00	0.25	22.0	1.00	0,81
H3N449T	20.00	18.00	0.25	22.0	1.00	0,81
H3N504SZ	22.00	18.00	0.25	25.0	1.00	0.813
H3N504Z	22.00	18.00	0.25	25.0	1.00	0.813
H3N505SZ	22.00	18.00	0.25	25.0	1.00	0.813
H3N505Z	22.00	18.00	0.25	25.0	1.00	0.938
H3N585SZ	29.125	26.75	0.25	31.5	1.125	0.938
H3N585Z	29.125	26.75	0.25	31.5	1.125	0.938
H3N586SZ	29.125	26.75	0.25	31.5	1.125	0.938
H3N586Z	29.125	26.75	0.25	31.5	1.125	0.938
H3N587SZ	29.125	26.75	0.25	31.5	1.125	0.938
H3N587S	29.125	26.75	0.25	31.5	1.125	0.938



HOFFMANN TECHNICS AG

**C- Face Flange mounting dimensions for H3N series of three-phase Nema motors.
Frame Size 445-505**

**IM B14 (C Face)
IM 3601
Mounting options**



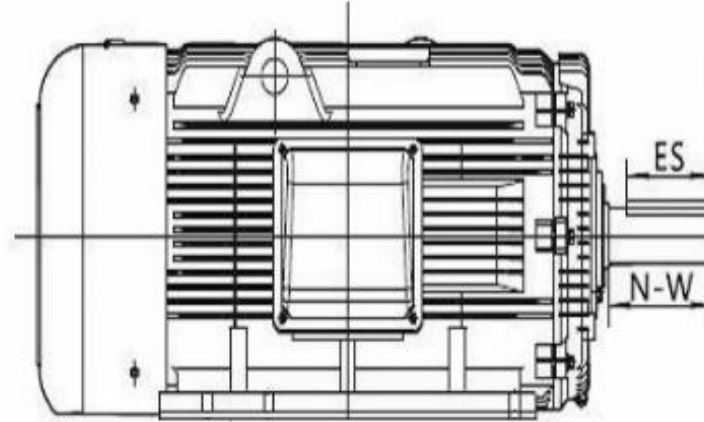
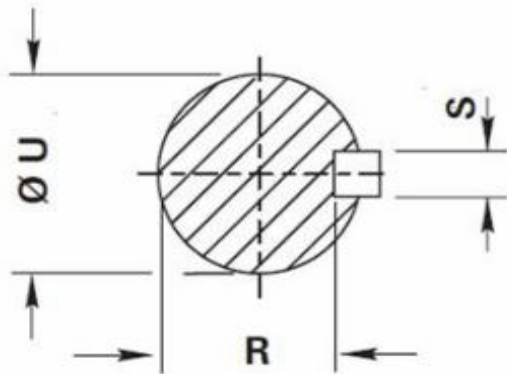
Frame	AJ	AK	BB	BD	BF
H3N445T	14.0	16.0	0.25	18.0	5/8-11
H3N445TS	14.0	16.0	0.25	18.0	5/8-11
H3N447T	14.0	16.0	0.25	18.0	5/8-11
H3N447TS	14.0	16.0	0.25	18.0	5/8-11
H3N449T	14.0	16.0	0.25	18.0	5/8-11
H3N449TS	14.0	16.0	0.25	18.0	5/8-11
H3N504SZ	14.5	16.5	0.25	17.5	
H3N504Z	14.5	16.5	0.25	17.5	
H3N505SZ	14.5	16.5	0.25	17.5	
H3N505Z	14.5	16.5	0.25	17.5	



HOFFMANN TECHNICS AG

Shaft dimensions for H3N series of three-phase Nema motors.
Frame Size 445-587

SHAFT



Frame	ES	N-W	R	S	U
H3N445T	6.91	8.50	2.880	0.875	3.375
H3N445TS	3.03	4.75	2.021	0.625	2.375
H3N447T	6.91	8.50	2.880	0.875	3.375
H3N447TS	3.03	4.75	2.021	0.625	2.375
H3N449T	6.91	8.50	2.880	0.875	3.375
H3N449TS	3.03	4.75	2.021	0.625	2.375
H3N504SZ	4.875	5.50	2.402	0.625	2.750
H3N504Z	8.125	9.25	3.134	0.875	3.625
H3N505SZ	4.875	5.50	2.402	0.625	2.750
H3N505Z	8.125	9.25	3.134	0.875	3.625
H3N585SZ	7.50	7.75	2.577	0.75	3.000
H3N585Z	7.75	10.00	3.309	1.00	3.875
H3N586SZ	7.50	7.75	2.577	0.75	3.000
H3N586Z	9.75	10.00	3.309	1.00	3.875
H3N587SZ	7.50	7.75	2.277	0.75	3.000
H3N587S	9.75	10.00	3.309	1.00	3.875



HOFFMANN TECHNICS AG



H3N Series Nema Motors

Mechanical Technical Information

Axial and radial loads

Maximum permissible external axial thrust and radial loads in pounds force

Type	Poles	Horizontal shaft		Vertical Shaft				Maximum permissible radial load at end of shaft standard mounting
		Load towards Motor	Load away from motor	Shaft up		Shaft down		
				Load towards Motor	Load away from motor	Load towards Motor	Load away from motor	
H3N143T	2	101	155	96	163	109	150	208
	4	91	145	82	156	102	136	193
	6	75	129	66	140	86	120	185
	8	82	136	75	146	92	129	168
H3N145T	2	101	155	96	163	109	150	208
	4	91	145	82	156	102	136	193
	6	75	129	66	140	86	120	185
	8	82	136	75	146	92	129	168
H3N182T	2	174	246	161	266	194	233	285
	4	160	232	143	258	186	215	275
	6	150	222	132	247	175	204	265
	8	124	196	106	220	148	178	223
H3N184T	2	174	246	161	266	194	233	285
	4	160	232	143	258	186	215	275
	6	150	222	132	247	175	204	265
	8	124	196	106	220	148	178	223
H3N213T	2	300	379	277	414	334	356	460
	4	286	365	258	407	328	337	470
	6	272	351	241	393	314	320	452
	8	219	298	187	342	263	267	460
H3N215T	2	300	379	277	414	334	356	470
	4	286	365	258	407	328	337	452
	6	272	351	241	393	314	320	425
	8	219	298	187	342	263	367	787
H3N254T	2	464	576	277	646	534	527	828
	4	472	583	258	674	563	519	807
	6	453	565	241	658	547	499	777
	8	425	536	187	617	506	479	787
H3N256T	2	464	576	416	646	534	527	787
	4	472	583	408	674	563	519	828
	6	453	565	388	658	547	499	807
	8	425	536	367	617	506	479	777
H3N284T	2	585	712	416	807	681	647	948
	4	614	741	408	871	744	656	1013
	6	587	714	388	654	728	620	981
	8	544	671	367	803	677	577	931
H3N286T	2	585	712	520	807	681	647	948
	4	614	741	529	871	744	656	1013
	6	587	714	494	654	728	620	981
	8	544	671	450	803	677	577	931

All figures are based on L10aah life of 20 000 hours





H3N Series Nema Motors

Mechanical Technical Information

Bearing references and oil seals for horizontally-mounted motors only

Type	Polarity	Bearings		Oil seals	
		Drive end	Non-drive end	Drive end	Non-drive end
143T/145T	All	62052Z	62032Z	25 x 35 x 7	17 x 28 x 6
182T/184T	All	62062Z	62052Z	30 x 42 x 7	25 x 37 x 7
213T/215T	All	62082Z	63052Z	40 x 52 x 7	25 x 37 x 7
254T/256T	All	63092Z	63072Z	45 x 60 x 7	35 x 47 x 7
284T/286T	All	63102Z	63082Z	50 x 65 x 8	40 x 52 x 7
324TN	All	6312	6312	60 x 80 x 8	60 x 80 x 8
326TN	All	6312	6312	60 x 80 x 8	60 x 80 x 8
326T	All	6313	6313	65 x 90 x 10	65 x 90 x 10
364T	All	6314	6314	70 x 90 x 10	70 x 90 x 10
365T	2	6314	6314	70 x 90 x 10	70 x 90 x 10
	4 up	6316	6316	80 x 110 x 10	80 x 110 x 10
404T	2	6314	6314	70 x 90 x 10	70 x 90 x 10
	4 up	3618	3618	90 x 120 x 12	90 x 120 x 12
405T/444TN	2	6314	6314	70 x 90 x 10	70 x 90 x 10
	4 up	6318	6318	90 x 120 x 12	90 x 120 x 12
444T/445TN	2	6316	6316	70 x 90 x 10	70 x 90 x 10
	4 up	6319	6319	90 x 120 x 12	90 x 120 x 12
445T	2	6316	6316	70 x 90 x 10	70 x 90 x 10
	4 up	6319	6319	90 x 120 x 12	90 x 120 x 12
447T	2	6316	6316	70 x 90 x 10	70 x 90 x 10
	4 up	6319	6319	90 x 120 x 12	90 x 120 x 12
504Z	2	6316	6316	70 x 90 x 10	70 x 90 x 10
	4 up	6319	6319	90 x 120 x 12	90 x 120 x 12
505Z	2	6316	6316	70 x 90 x 10	70 x 90 x 10
	4 up	6319	6319	90 x 120 x 12	90 x 120 x 12
585Z/586Z/587Z	2	6316	6316	75 x 100 x 10	75 x 100 x 10
	4 up	6324	6324	115 x 145 x 14	115 x 145 x 14

Grease life expected at 80°C bearing temperature x 10 hours (L1 regreasing interval)

Type	3600 min		1800 min		1200 min		900min	
	Horizontal	Vertical	Horizontal	Vertical	Horizontal	Vertical	Horizontal	Vertical
145T	22.0	22.0	32.0	32.0	35.0	35.0	35.0	35.0
182T-286T	26.0	26.0	35.0	35.0	35.0	35.0	35.0	35.0
324T	7.7	5.0	22.6	14.7	27.9	17.9	30.0	20.6
326TN	6.4	5.0	23.6	14.7	27.6	17.9	30.0	20.6
326TN	6.4	3.3	20.4	13.2	26.9	17.5	30.0	20.6
364T	5.2	3.3	18.9	12.3	25.8	16.8	30.0	20.0
365T	5.2	3.3	17.5	11.4	24.2	16.0	29.4	19.1
404T	5.2	3.3	16.8	10.9	24.2	15.7	29.0	18.8
405T/444TN	5.2	3.3	16.8	10.9	24.1	15.7	29.0	18.8
444T/445TN	3.0	1.9	16.4	10.6	24.1	15.6	28.8	18.7
445T	3.0	1.9	16.4	10.6	24.1	15.6	28.8	18.7
447T	3.0	1.9	16.4	10.6	24.1	15.6	28.8	18.7
504Z	3.0	1.9	16.4	10.6	24.1	15.6	28.8	18.7
505Z	3.0	1.9	16.4	10.6	24.1	15.6	28.8	18.7
585Z-587Z	3.0	1.9	11.1	7.2	20.3	13.2	25.6	16.6





H3N Series Nema Motors

Mechanical Technical Information

Maximum permissible external axial thrust and radial loads in pounds force

Type	Poles	Horizontal shaft		Vertical Shaft				Maximum permissible radial load at end of shaft	
		Load towards Motor	Load away from motor	Shaft up		Shaft down		standard ball bearing	Roller bearing
				Load towards Motor	Load away from motor	Load towards Motor	Load away from motor		
H3N324T	2	1191	1043	1095	1175	1323	946	1120	1421
	4	1333	1185	1215	1347	1496	1066	1226	1459
	6	1337	1214	1228	1399	1547	1080	1246	1459
	8	1191	1188	1202	1373	1521	1054	1219	1459
H3N326T	2	1468	1043	1095	1175	1323	946	1120	1421
	4	1519	1339	1299	1576	1705	1170	1303	1539
	6	1491	1391	1332	1655	1783	1204	1342	1539
	8	1476	1363	1303	1626	1754	1175	1313	1539
H3N364T	2	1649	1356	1331	1555	1675	1352	1444	1476
	4	1713	1529	1472	1776	1896	1352	1500	1884
	6	1685	1594	1496	1898	2018	1376	1537	1884
	8	1457	1565	1467	1870	1989	1348	1508	1884
H3N365T	2	1931	1338	1277	1585	1705	1157	1370	1421
	4	2091	1797	1709	2106	2239	1576	1780	1884
	6	2075	1958	1849	2298	2432	1715	1886	1884
	8	2370	1941	1832	2282	2415	1699	1869	1884
H3N404T	6	2394	2221	2050	2665	2814	1901	2216	2748
	8	1396	2245	2074	2689	2838	1925	2242	2748
H3N405T	2	12234	1263	1163	1586	1719	1030	1285	1895
	4	2311	2085	1942	2489	2638	1793	2091	2748
	6	2337	2162	1888	2747	2896	1740	2039	2748
	8	1373	2188	1915	2774	2923	1766	2066	2748
H3N444T	2	1373	1253	1111	1617	1737	991	1216	2340
	4	2130	1982	1735	2526	2675	1586	2182	3658
	6	2443	2367	1962	3032	3109	1886	2232	3696
	8	2492	2415	2010	3081	3157	1934	2179	3696
H3N445TN	2	1628	1494	1285	1968	2102	1152	2052	2340
	4	2251	2174	1800	2793	2870	1723	2159	2696
H3N445TN	2	1605	1471	1226	1997	2131	1093	1977	2340
	4	2199	2122	1658	2866	2942	1581	2108	3696
	6	2389	2312	1818	3102	3179	1742	2159	3696
	8	2436	2360	1865	3149	3226	1789	2185	3696
H3N504Z	6	2414	2338	1887	3069	3145	1811	2237	3575
	8	2462	2386	1935	3117	3193	1859	2237	3575
H3N505Z	2	1541	1407	1090	2015	2149	957	1995	2719
	4	2184	2108	1620	2884	2961	1544	2124	3575
	6	2372	2295	1773	3127	3203	1696	2177	3575
	8	2420	2344	1821	3175	3251	1744	0	3575
H3N585Z	2	1331	1197	660	2134	2268	527	0	2682
	4	2831	2485	1888	3819	4165	1542	0	4817
	6	2986	2640	1935	4128	4474	1588	0	4817
	8	3202	2856	2156	4349	4696	1810	0	4817
H3N586Z	2	1255	1121	478	2215	2348	345	0	2682
	4	2726	2380	1599	3969	4315	1252	0	4817
	6	2865	2519	1600	4300	4647	1254	0	4817
	8	3000	2654	1736	4436	4782	1390	0	4817
H3N587Z	6	2817	2471	1478	4359	4705	1132	0	4817
	8	2953	2607	1614	4494	4841	1268	0	4817

All figures are based on L10aah life of 20 000 hours

